

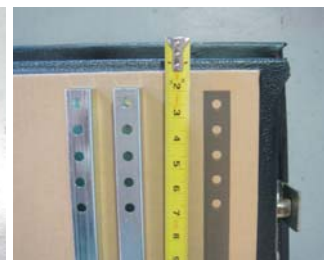
Congratulations on your purchase of the X-ramp.

Installations Instructions

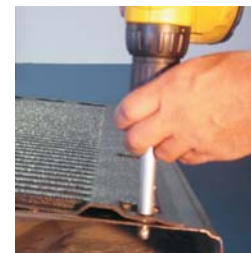
1. You will be mounting the slide rails to your tailgate but first you must determine which set of slide rails, included with your universal mounting hardware, is best for your make and model truck. The slide rails are the 1" square tubing with the holes and there are 2 sizes included with the hardware. One set of rails is 16" long and the other set is 18 3/4" long. Each slide rail has 5 holes at one end which allows the installer to cut the slide rail, if necessary, to fit your tailgate height. The optimum length of the slide rail is when the top end of the rail is positioned 2" from the top of the tailgate and the bottom end 1" from the bed surface. You can measure the distance from the top of the tailgate to the bed liner and subtract 3" to find the optimum length of the slide rail. If cutting is required determine which of the 5 holes come closest to this distance and cut past that hole to insure the rail is long enough.



2. Match the slide rail length with the drawing of the slide rails on the corrugated board template that best fits your tailgate. If needed, remove the excess corrugated board from the template to allow positioning the template 1" from the surface of the truck bed and 2" from the top of the tailgate and tape the template in place on the tailgate. As seen on this mid-sized tailgate the longer slide rail is too long and the shorter slide bar is the correct choice. Generally, a full-sized truck will use the longer slide rails and mid-sized and small trucks will use the shorter slider rails.



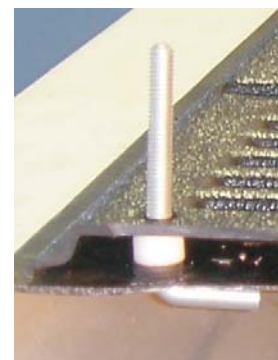
3. Using a 3/8" drill bit with a stop collar and using the holes at the end of each slide rail as a positioning point in conjunction with the template, drill 1 hole at each end of the slide rail through the detachable liner and the inside surface of the tailgate as indicated on the template. Make sure the center line of the slide rails are exactly 48" apart.



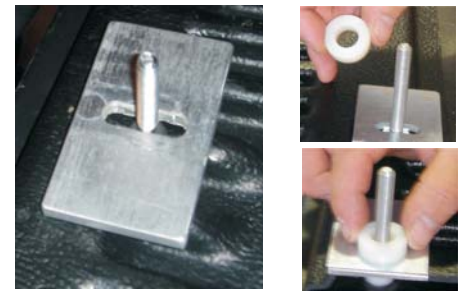
4. Now you have the location of the slide rail mounting 'L' bolts and you can remove the detachable liner from the tailgate surface. Roll the rubber (Buna) rings onto the threaded 'L' bolts stopping at the bottom of the threads. Insert the 'L' bolt into the hole keeping the threaded portion of the bolt exposed and roll the rubber ring down to the surface of the tailgate. Using a cut-away tailgate for these photos you can see how the 'L' bolt secures itself in the tailgate. The rings will hold the 'L' bolt in place, keeping them from dropping down inside your tailgate and will also seal the hole when installation is complete. Note: If you drop the 'L' bolt inside the tailgate most make and model trucks have a removable panel on the inside of the gate which can be opened so your 'L' can be removed and the panel then replaced.



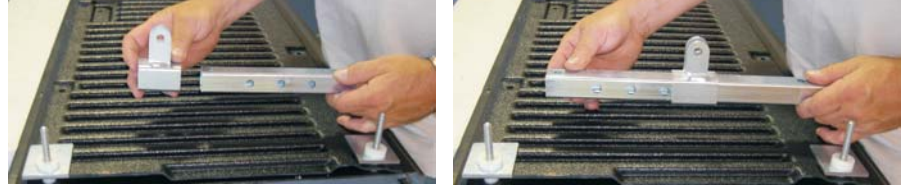
5. Determine if there is a gap between the detachable gate liner and the surface of the tailgate at each 'L' bolt location. If there is a gap, place the appropriate spacer or spacers onto the exposed portion of the threaded 'L' bolt to fill the gap between the tailgate surface and the plastic detachable liner. Once the spacers are in place it will provide a more solid base for the mount plates and slide rails. Now replace the detachable tailgate liner over the 4 'L' bolts and re-attach the gate liner with the original hardware.



6. Remove the peel-off backer from the adhesive tape on the back of the rectangular mounting plates and position the plates over the threaded 'L' bolts to the surface of the liner. The mounting plate can be positioned at any angle to maximize the sticky surface to the liner. Some liners may have contours, ribs, ridges and valleys and 100% contact may not be an option. 100% contact between the plate and the liner is not required. The mounting plates should be level with the surface of the gate liner. After the mounting plates are in place put the 1" round by 3/8" high spacer over the 'L' bolt to the surface of the mounting plate.



7. Place the slide bracket over the slide rail with the ears of the slide bracket facing upward.



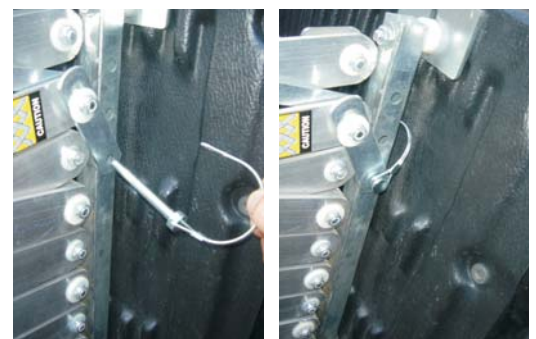
8. Place the slide rails down over the threaded 'L' bolts and on top of the 1" dia spacer. Slip a washer over the 'L' bolt and tighten the nylon lock nut onto the threaded 'L' bolt. Trim of any excess length of the 'L' bolt remaining above the nut.

9. Now you're ready to mount the ramp to the slide rails. Simply lift the ramp into position and place the scissor arm with the 3/8" hole into position between the ears on the slide bracket. Insert the hinge pin through the slide bracket ear, through the scissor arm and through the opposite side of the slide bracket ear. Insert the lock pin through the hinge pin to lock the hinge pin in place.



10. Lift your tailgate to the up position. You may need to make a slight adjustment, depending upon your particular bed liner to the caster arm and caster so the ramp is supported evenly and balanced on the bed of the truck.

11. Don't forget to lock your ramp in the folded position when the truck is in motion. Use the 'D' pin and locking bracket to secure the ramp to the slide rails.



If you have any questions please call 574 522-7201.