

CONSUMER: KEEP INSTRUCTIONS AND READ BEFORE EACH USE.

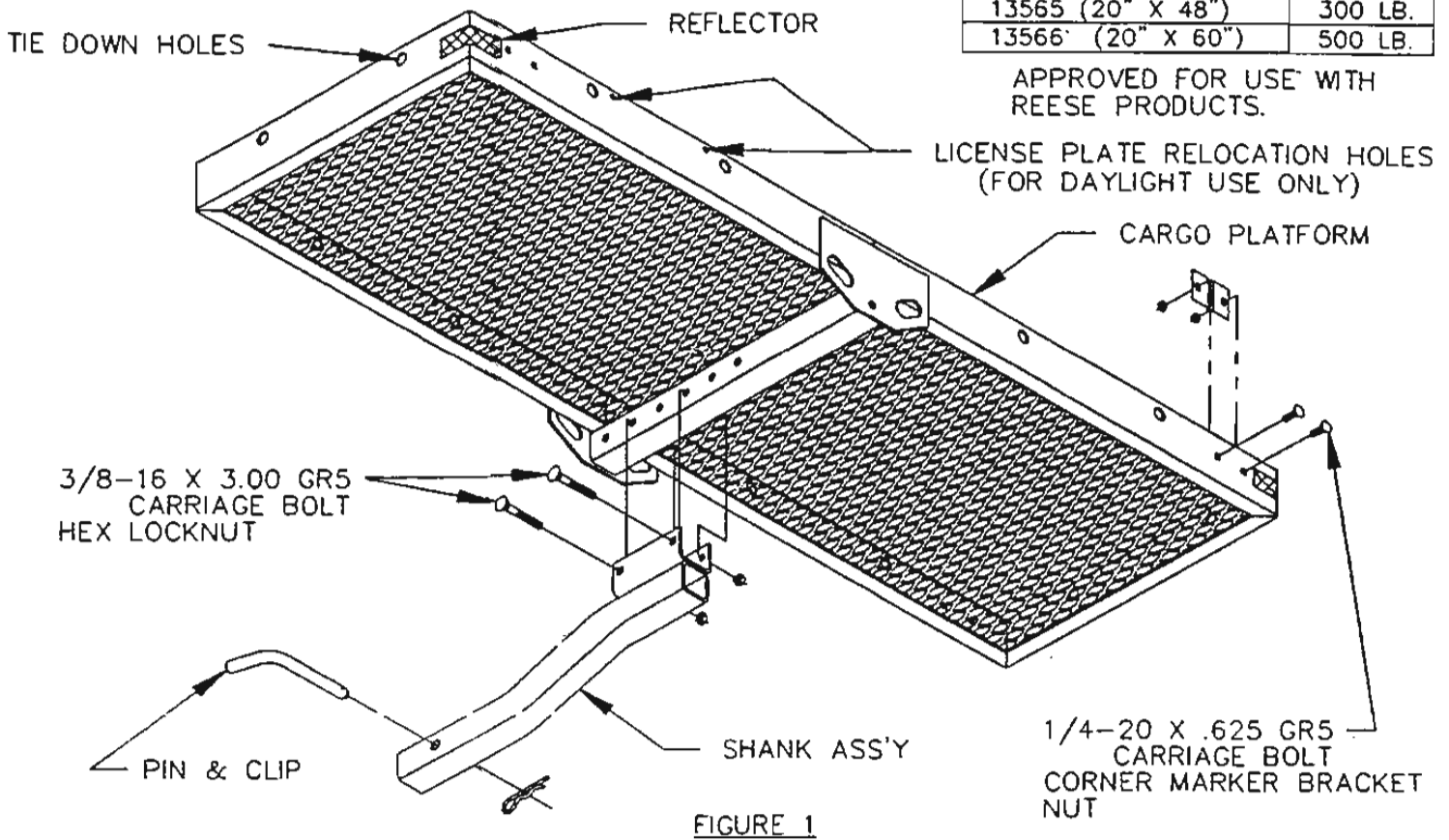
INSTALLATION INSTRUCTIONS FOR HITCH MOUNTED CARGO CARRIER

TOOLS REQUIRED: 7/16 & 11/16 WRENCH

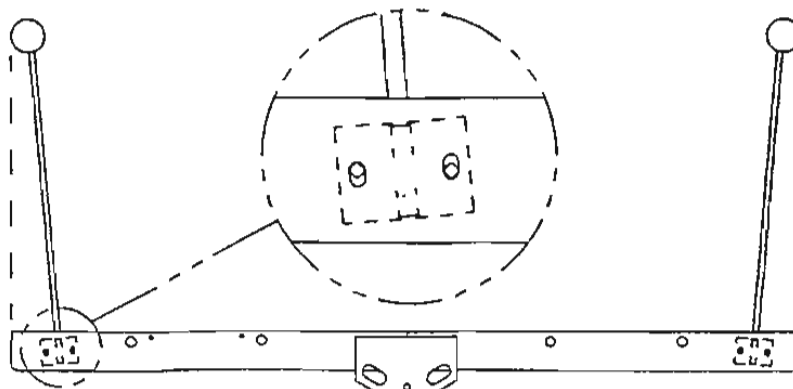
DO NOT EXCEED LOWER OF VEHICLE
MFR'S TONGUE WEIGHT RATING OR
HITCH TONGUE WEIGHT RATING OR

CARGO CARRIER	RATING
13565 (20" X 48")	300 LB.
13566 (20" X 60")	500 LB.

APPROVED FOR USE WITH
REESE PRODUCTS.



1. Place shank assembly in receiver on vehicle and attach pin and clip.
2. Place cargo carrier platform on shank assembly and adjust cargo platform for proper clearance from bumper (minimum 1" to maximum 4").
Note: Cargo platform can be rotated 180° for further adjustment.
3. Install shank assembly fasteners as shown in figure 1 and tighten to 20 ft·lb.
4. Apply reflectors to rear corners of cargo platform as shown in figure 1.



5. Install corner marker brackets and fasteners as shown in figure 1.
6. Insert rod into corner marker bracket and rotate as shown in figure 2.
7. Tighten corner marker bracket fasteners to 5 ft·lb.

ACCESSORIES

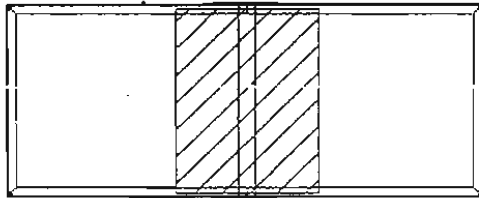
- * 13567 - 2" SHANK KIT FOR 13565 CARGO CARRIER
(ALLOWS 13565 TO BE USED IN 2" RECEIVER)
- * 13568 - CARGO CARRIER LIGHT KIT
- * 13569 - CARGO CARRIER BIKE CARRIER (CAPACITY 4 BIKES)
FOR USE ON 13565 WITH CHILDREN'S BIKES (20" TIRES OR LESS)
FOR USE ON 13566 WITH ADULT & CHILDREN'S BIKES

WARNING

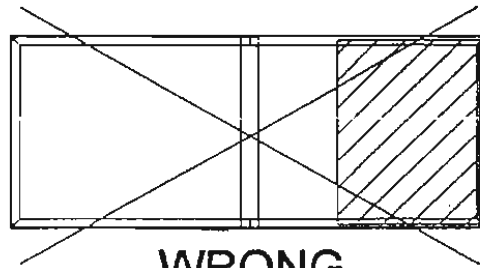
- * DO NOT USE TO TRANSPORT PEOPLE, ANIMALS, OR FLAMMABLE LIQUIDS
- * USE LIGHT KIT (13568) IF LOAD OR CARGO CARRIER BLOCKS THE TAILLIGHTS OR TURN SIGNALS

CAUTION

- * THE CARGO CARRIER LOAD RATING IS THE LOWEST OF THE FOLLOWING:
 - CARGO CARRIER RATING
 - HITCH TONGUE WEIGHT RATING
 - VEHICLE MANUFACTURER TONGUE WEIGHT RATING
- * CENTER OF GRAVITY OF LOAD MUST BE POSITIONED WITHIN MIDDLE THIRD OF PLATFORM



CORRECT



WRONG

- * SECURELY FASTEN LOAD TO CARGO PLATFORM USING THE TIE DOWN HOLES
- * CHECK SECURITY OF LOAD, FASTENERS, PIN, & CLIP AT ALL FUEL AND REST STOPS
- * SEVERE BUMPS CAN DAMAGE YOUR TOWING VEHICLE, HITCH AND CARGO CARRIER. DRIVE SLOWLY ON ROUGH ROADS. STOP AND MAKE A THOROUGH INSPECTION IF ANY PART OF YOUR CARGO CARRIER STRIKES THE ROAD. CORRECT ANY PROBLEMS BEFORE RESUMING TRAVEL
- * DO NOT CUT, DRILL, WELD, OR MODIFY CARGO CARRIER
- * DO NOT CARRY LOADS WIDER THAN YOUR VEHICLE
- * RELOCATE LICENSE PLATE IF BLOCKED BY LOAD OR CARGO CARRIER
 - FOR DAYLIGHT, RELOCATE LICENSE PLATE TO HOLES PROVIDED, SEE FIG. 1
 - FOR NIGHTTIME, USE LIGHT KIT (13568)