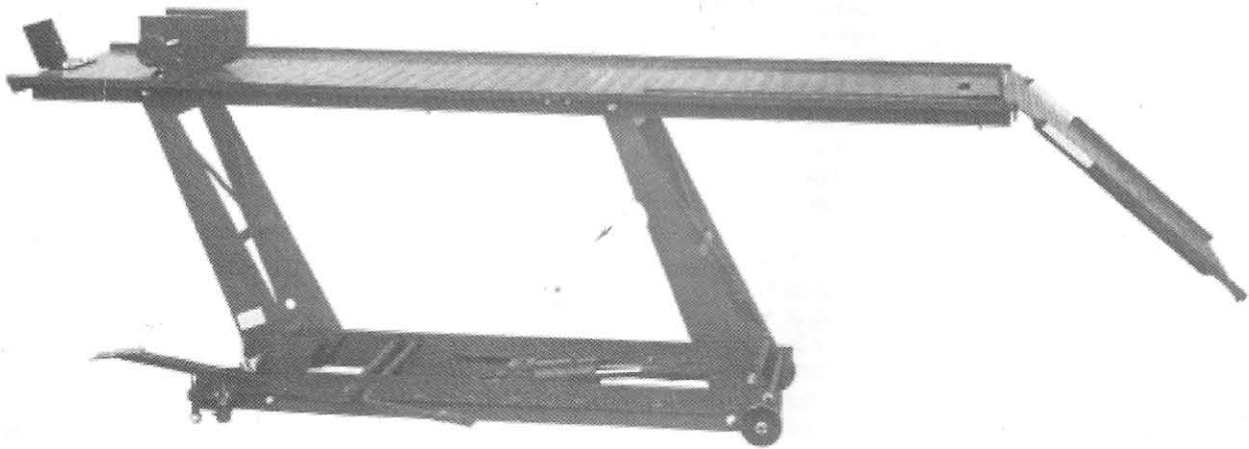


HEAVY DUTY MOTORCYCLE LIFT 1000 LBS



Instruction Manual

Please read this instruction manual carefully before use.

IMPORTANT

PLEASE READ THESE INSTRUCTIONS CAREFULLY. NOTE THE SAFETY INSTRUCTIONS N WARNINGS. USE THE PRODUCT CORRECTLY AND WITH CARE FOR THE PURPOSE FOR WHICH IT IS INTENDED. FAILURE TO DO SO MAY CAUSE DAMAGE TO PROPERTY AND/OR PERSONAL INJURY. PLEASE KEEP THIS INSTRUCTION MANUAL SAFE FOR FUTURE USE.

1. SAFETY INSTRUCTIONS AND WARNINGS

- 1.1 Use a qualified person to maintain the lift in good condition. Keep it clean for best and safest performance.
- 1.2 The maximum load is 1000lbs. **DO NOT** exceed this rated capacity.
- 1.3 Use this lift for lifting purpose only. **DO NOT** use it for any other purpose it is not designed to perform.
- 1.4 Keep children and unauthorized persons away from the work area.
- 1.5 Remove ill fitting clothing. Remove ties, watches, rings and other loose jewelry, and contain long hair.
- 1.6 Wear ANSI approved safety goggles when operating the lift.
- 1.7 Keep proper balance and footing, do not overreach and wear nonskid footwear.
- 1.8 Only use this lift on a surface that is stable, level, dry and not slippery, and capable of sustaining the load. Keep the surface clean, tidy and free from unrelated materials and ensure that there is adequate lighting.
- 1.9 Before use check to ensure that all applicable bolts and nuts are firmly tightened.
- 1.10 Before use stabilize the lift by turning the adjusting screws down so that the castors are raised off the ground.
- 1.11 Ensure the motorcycle is adequately secured to the lifting platform with appropriate straps before operating.
- 1.12 When the platform has been raised to the working height, ensure the locking bar is engaged to prevent accidental lowering.
- 1.13 Before lowering lift ensure that there are no obstructions underneath and that all persons are standing clear.
- 1.14 Always keep your hands and feet away from moving parts.
- 1.15 **DO NOT** attempt to transport a load on the lift. The lift must only be used in a static position for lifting and lowering loads. Ensure that the load remains stable at all times.
- 1.16 **DO NOT** use the lift if damaged, any suspect parts are noted or it has been subjected to a shock load.
- 1.17 **DO NOT** operate the lift when you are tired or under the influence of alcohol, drugs or any intoxicating medication.
- 1.18 **DO NOT** allow untrained persons to operate the lift.
- 1.19 **DO NOT** make any modifications to the lift.
- 1.20 **DO NOT** expose the lift to rain or any other kind of bad weather.
- 1.21 If the lift need repairing and/or there are any parts which need to be replaced, have it repaired by authorized technicians and only use the replacement parts supplied by the manufacturer.
- 1.22 **WARNING:** the warnings, cautions and instructions discussed in this instruction manual cannot cover all possible conditions and situations that may occur. It must be understood by the operator that common sense and caution are factors which cannot be built into this product, but must be supplied by the operator.

2. SPECIFICATIONS

Capacity	1000lb	Minimum Height	175mm
Maximum Height	750mm		

3. ASSEMBLY

Unpack the lift and check contents with list below. Should there be any damaged or missing parts, contact your supplier immediately.

- *Main Assembly *Sliding Plate *Leading Plate *Vice
*Lift Foot Pedal *Release Foot Pedal *Locking Bar *Bolts, Washers, Nuts, Cotter Pins
- 3.1 Place the sliding plate (36) to the platform (35) to cover the rear wheel removal aperture.
 - 3.2 Attach leading plate (37) to end of platform using washers (23) and R-pins (04).
 - 3.3 Fit the front wheel vice assembly (34) to the front of the platform using bolts (33), washers (23) and nuts(30).
 - 3.4 Fit the baffle plate (32) using bolts (33), washers (23) and nuts (30).
 - 3.5 Fit the lift foot pedal (11) to the pump piston spindle (9) and fit the release foot pedal (10) to the release valve spindle (5).

4. BEFORE FIRST USE

- 4.1 Leave the pump for one hour to allow the oil to settle before purging the system.
NOTE: Failure to allow sufficient time for the oil to settle could result in air remaining in the oil. In this event, the pump will not purge completely first time and a second purge will be required.
- 4.2 Purge the hydraulic circuit to eliminate any air in the system by fully pressing the release foot pedal (10) and pumping the lift foot pedal (11) 15 to 20 times.

4.3 Test the lift, unladen, by raising it to full height and then lowering it. Depress release foot pedal (10) slowly to control the rate of descent.

5. OPERATING INSTRUCTIONS

WARNING! Ensure that you read, understand and apply the safety instructions and warnings before use.

5.1 Position the lift in a suitable area, checking that the surface on which the lift will stand is solid and flat.

5.2 Turn the adjusting screw assy (18) down to raise the castors fork assembly (14) off the ground to prevent the lift from moving.

5.3 Wheel the motorcycle up the leading plate and onto the platform..

NOTE: There is a choice of mounting holes for the vice to cater for various sizes of motorcycle.

5.4 Clamp front wheel in vice to prevent any movement of the motorcycle.

5.5 Strap the motorcycle securely to the platform.

5.6 Raise the lift by pumping the lift foot pedal (11).

5.7 When the platform has been raised to the working height, pass the locking bar (22) through the holes in the front lifting arm (38) so that the lift cannot be inadvertently lowered.

5.8 When work is done, check under the lift to ensure that there are no obstructions and that it is safe to lower the unit. Remove the locking bar and then SLOWLY press the release foot pedal to GENTLY lower the lift.

NOTE: The speed of lowering is controlled by the release valve. The more the valve is opened the more rapidly the lift descends. Ensure the descent is slow and controlled.

NOTE: The speed of lowering can also be adjusted by tightening or loosening the screw (Part No,P11)

5.9 When the lift is fully lowered, unstrap the motorcycle, open the vice jaws and remove the cycle from the lift.

6. MAINTENANCE

6.1 When not in use, the lift must be stored in the lowest position in a dry location to minimize ram and piston corrosion.

6.2 Keep the lift clean and wipe off any oil or grease. Lubricate all moving parts.

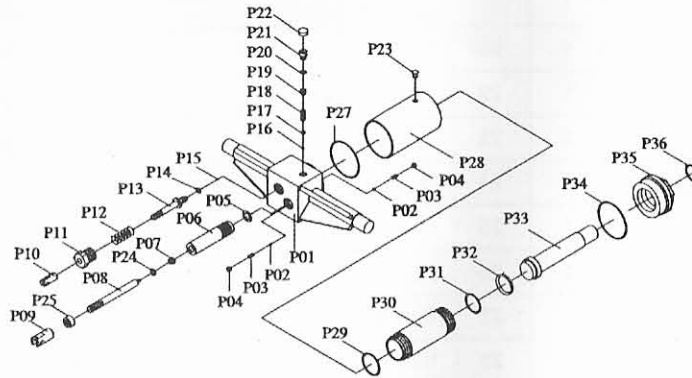
6.3 Periodically check the ram and piston for signs of corrosion. Clean exposed areas with a clean oiled cloth.

6.4 Before each use check all parts. If any part of the lift is damaged or suspect, remove the lift from service and take necessary action to repair.

6.5 Check the hydraulic oil level. If it is not adequate, remove the filler plug (P23) on the pump and add hydraulic jack oil as necessary. **DO NOT** use brake fluid or any other improper fluid. Only a good quality hydraulic jack oil can be used.

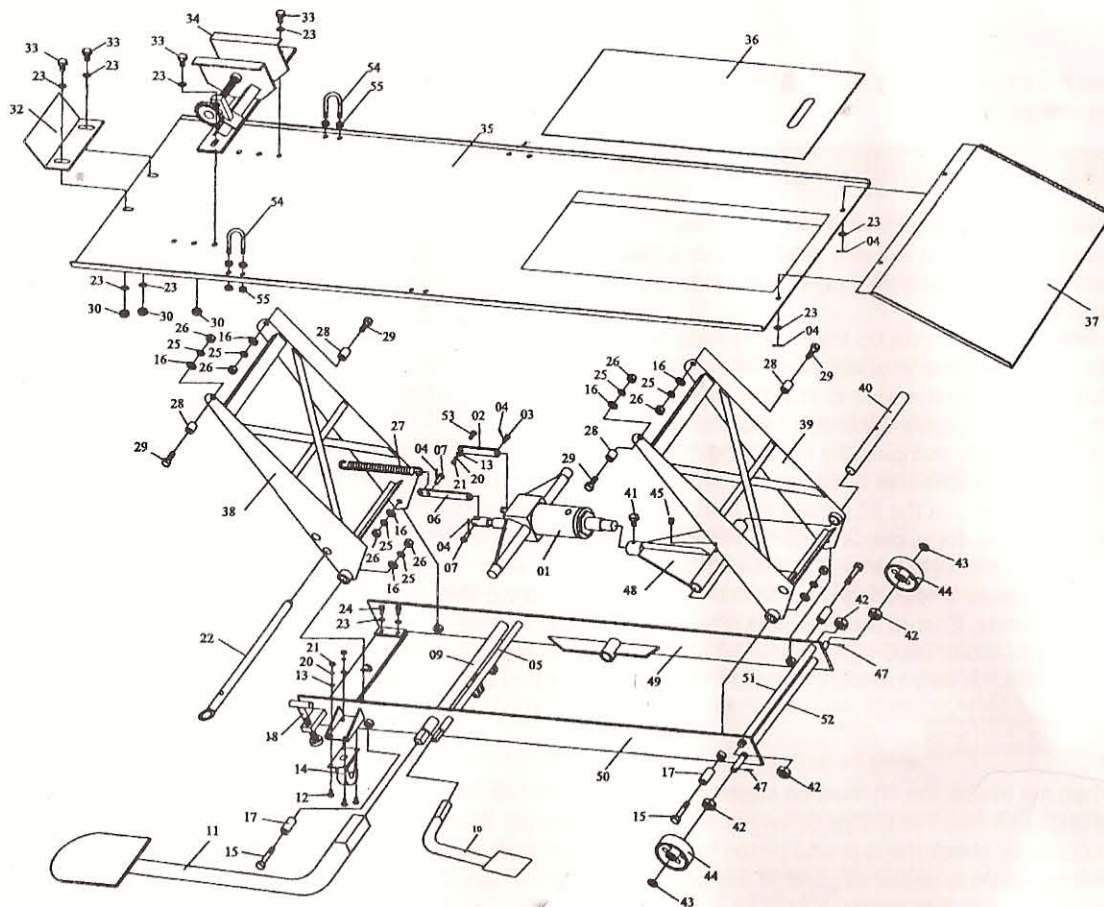
6.6 When lift efficiency drops, purge away air from the hydraulic system as described in 4.2.

PUMP



PARTS LIST OF PUMP

No.	Description	Q'ty	No.	Description	Q'ty	No.	Description	Q'ty
P01	Base	1	P13	Release valve	1	P25	Nut	1
P02	Steel ball	2	P14	O-ring	1	P27	Nylon ring	1
P03	Spring	2	P15	Steel ball	1	P28	Reservoir	1
P04	Screw	2	P16	Steel ball	1	P29	Nylon ring	1
P05	Copper washer	1	P17	Ball cup	1	P30	Cylinder	1
P06	Regulating plug	1	P18	Spring	1	P31	O-ring	1
P07	Sealing ring	1	P19	Screw	1	P32	Nylon ring	1
P08	Pump piston	1	P20	O-ring	1	P33	Piston rod	1
P09	Union nut	1	P21	Screw	1	P34	Nylon ring	1
P10	Union nut	1	P22	Screw protector	1	P35	Top nut	1
P11	Screw	1	P23	Filler plug	1	P36	O-ring	1
P12	Spring	1	P24	Nylon ring	1			



PARTS LIST

No.	Description	Q'ty	No.	Description	Q'ty	No.	Description	Q'ty
01	Hydraulic pump	1	20	Lock washer	9	38	Front lifting arm	1
02	Link	1	21	Nut	9	39	Rear lifting arm	1
03	Pin	1	22	Locking bar	1	40	Lifting arm spindle	1
04	R-pin	5	23	Washer	14	41	Bolt	2
05	Release valve spindle	1	24	Bolt	4	42	Nut	4
06	Link	1	25	Lock washer	8	43	Washer	2
07	Pin	2	26	Nut	8	44	Front wheel	2
09	Pump piston spindle	1	27	Spring	1	45	Set screw	1
10	Release foot pedal	1	28	Bush	4	47	Cotter pin	2
11	Lift foot pedal	1	29	Bolt	4	48	Connection	1
12	Bolt M6x16	8	30	Nut	4	49	Frame assembly(RH)	1
13	Washer 6mm	17	32	Baffle plate	1	50	Frame assembly(LH)	1
14	Castor fork assembly	2	33	Bolt	4	51	Lifting arm top rod	1
15	Bolt	4	34	Vise assembly	1	52	Front spindle	1
16	Washer	8	35	Platform	1	53	Bolt	1
17	Bush	4	36	Sliding plate	1	54	U-Bolt	2
18	Adjusting screw assy	2	37	Leading plate	1	55	Nut	8