

135KG MOTORCYCLE LIFT

SPECIFICATIONS

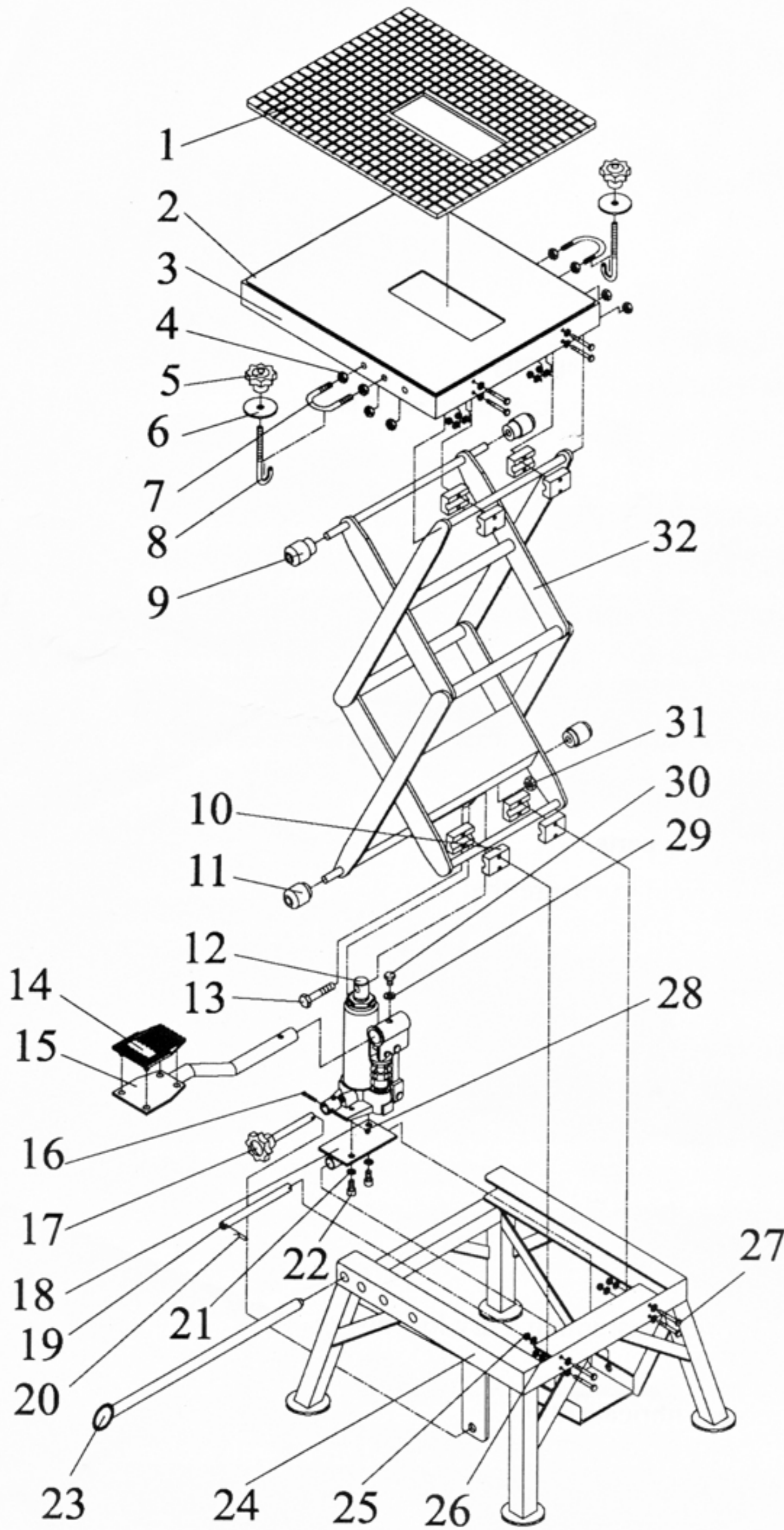
Max. Capacity	135 kg
Max Height	900 mm
Min Height	348 mm
Platform Size	410 x 350 mm
Net Weight	31 kg
Gross Weight	33.5 kg

CAUTION

1. The maximum load is 135kgs. **DO NOT** exceed this rated capacity.
2. Use this lift for lifting purpose only. **DO NOT** use it for any other purpose it is not designed to perform.
3. Keep children and unauthorized persons away from the work area.
4. Only use this lift on a surface that is stable, level, dry and not slippery, and capable of sustaining the load. Keep the surface clean, tidy and free from unrelated materials and ensure that there is adequate lighting.
5. Before lifting ensure the motorcycle is adequately secured to the lifting platform with threaded knobs, big washers, J-hooks and U-bolts.
6. When the platform has been raised to the working height, ensure the locking bar is engaged to prevent accidental lowering.
7. Always keep your hands and feet away from moving parts.
8. When work is done, check under lift and motorcycle to ensure that there are no obstructions and that it is safe to lower the unit. Remove the locking bar and then **SLOWLY** turn the release valve to **GENTLY** lower the lift.
9. **DO NOT** allow untrained persons to operate the lift.
10. **DO NOT** make any modifications to this motorcycle lift.
11. **DO NOT** expose the lift to rain or snow.
12. Ensure that you read, understand and apply the safety instructions and warnings before use.
Failure to heed these instructions may result in property damage and/or personal injury.

MAINTENANCE

- 1 When not in use, the lift must be stored in the lowest position in a dry location to minimize ram and piston corrosion.
- 2 Keep the lift clean and wipe off any oil or grease. Lubricate all moving parts.
- 3 Periodically check the ram and piston for signs of corrosion. Clean exposed areas with a clean oiled cloth.
- 4 Before each use check all parts. If any part of the lift is damaged or suspect, remove the lift from service and take necessary action to repair.
- 5 When lift efficiency drops, open the release valve and pump the lift foot pedal rapidly 15 to 20 times to purge away air from the hydraulic system.



PARTS LIST

Part No.	Description	Qty
1	Rubber pad	1
2	Steel plate	1
3	Upper frame	1
4	Damping nut M 8	8
5	Threaded knob	2
6	Washer	2
7	U-bolt	2
8	J-hook	2
9	Upper roller	2
10	Fixing block	8
11	Lower roller	2
12	Pump	1
13	Bolt M 10	1
14	Foot pedal pad	1
15	Foot pedal	1
16	Bolt M 4 x 25	1
17	Release valve	1
18	Connecting plate	1
19	Connecting pin	1
20	R-pin	2
21	Lock washer M 8	2
22	Bolt M 8 x 16	2
23	Locking bar	1
24	Base frame	1
25	Damping nut M 5	8
26	Washer M 5	8
27	Bolt M 5 x 40	8
28	Damping nut M 4	1
29	Washer M 8	1
30	Bolt M 8 x 12	1
31	Damping nut M 10	1
32	Lifting arm assy	1