

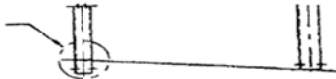


Universal MotorHome Ladder

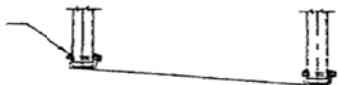
502L

- 1) Insert the Top of the ladder into the Middle section of the ladder. Use the 10-24 x 1 1/2" screw to secure it.
- 2) Check if the RV has a straight or curved roof. If the roof is straight skip to step 7, if it is curved continue to step 3.
- 3) Hang the ladder on the roof of the RV. Align the ladder so it is parallel to the side of the RV.

cut tube at
intersection
with roof
radius



re-assemble
brackets
onto tubes &
mount onto
roof surface



- 4) The outside tube of the ladder should be elevated. Measure the space between the outside tube and roof of the RV.
- 5) Use this measurement and cut off that amount off the bottom of the inside tube. Use a 3/16" drill bit and drill a hole through the bottom of the newly cut tube.
- 6) Use the 10-24 x 1 1/2" screws to attach the mounting brackets to the top of the ladder.
- 7A)** For Straight RV's: with the top of the ladder hanging parallel to the side of the RV, line up the bottom of the ladder with the top. The bottom step should be 6" to 12" above the bumper. Mark the bottom of the top section leaving enough length for the bottom section slide into the bottom of the top section.
- 8) Cut the tubes of the ladder and install the the bottom section of the ladder. Secure the two sections using the 10-24 x 1 1/2" screws.
- 9) Secure the Top and Bottom of the ladder with the # 10 Sheet Metal screws.
- 10) Take the 4 support brackets find the spots that are flat and have enough backing to install them. Mark the 4 points.
- 11) Drill 1/4" holes thru the ladder at the marked points and install the support brackets.
- 12) Secure the support bracket with the # 10 sheet metal screws.

For Bumper Mounting:

- 1) Take the bottom of the ladder and cut off the bottom bend at the desired location.
- 2) Remove the Foot and place it at the end of the newly cut tube. Drill a 3/16" hole thru the foot. Use the #10 Sheet Metal screw to secure the foot on the tube.
- 3) Secure the foot to the bumper.

