



RAMP WHEEL KIT

Instructions for Part #s WALKRAMP-SB-10,
WALKRAMP-SB-12, WALKRAMP-SB-14 and WALKRAMP-SB-16



PARTS

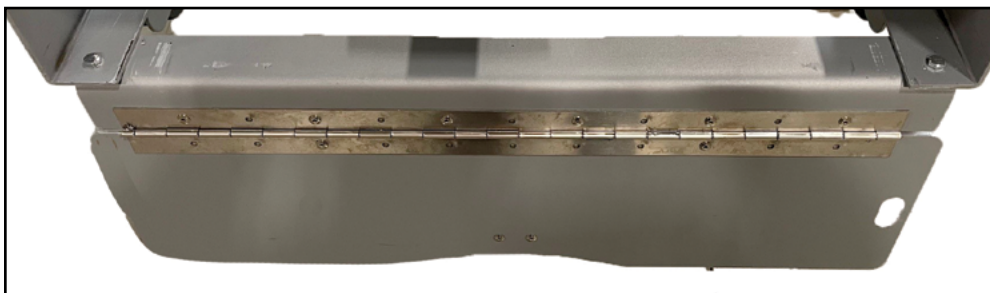
Part	Description	Qty.
A	M11 x 22mm Bolt	2
B	M11 Lock Nut	4
C	M14 x 28mm Bolt	4
D	M15 Lock Nut	5
E	24mm x 72mm Bolt	2
F	M24 Lock Nut	2
G	Shoulder Bolt	1
H	Stainless Latch	1
I	Safety Bolt	1
J	M16 Lock Nut	1
K	M11 x 115mm Bolt	2
L	Door with Hinge	1
M	Wheel Bracket	2
N	Wheel	2



RAMP STORAGE BRACKET ASSEMBLY

Step 1. Attach storage bracket door with hinge (L), to the bracket using two M11x22mm bolts (A) and two M11 lock nuts (B). SEE FIG. 1.

FIG. 1



Step 2. Attach wheel brackets (M) to sides of the storage bracket using four 14mm bolts (C) and four 15mm lock nuts (D). SEE FIG 2.

NOTE: The wheel brackets have slotted bolt holes so the placement of the wheel can be adjusted in relation to the walk ramp bracket. Start with the wheel bracket at the widest width possible.

Step 3. Attach wheel (N), to each wheel bracket with 24mm bolt (E) and 24mm lock nut (F). The lip of the wheel should be towards the outside of the walk ramp bracket. SEE FIG 2.

FIG. 2



WALK RAMP ASSEMBLY

Use shoulder bolt (G) and 15mm lock nut (D) to secure the stainless-steel latch (H) to the side of the walk ramp. SEE FIG. 3.

FIG. 3



RAMP STORAGE BRACKET INSTALLATION

NOTE: Storage bracket must be welded to the box truck frame.

Installation may vary depending on the vehicle.

Consult a professional if needed.

NOTE: Below are general guidelines for installation. Installation may vary depending on the vehicle.

Consult a professional if needed.

1. Lift the storage bracket up between the truck frame.
2. Check for proper clearance through the length of the bracket.
3. Weld the storage bracket to the frame of the truck.

NOTE: Angle iron brackets may need to be fabricated for proper spacing between the storage bracket and truck frame.

RAMP ASSEMBLY

After the walk ramp bracket has been attached to the underside of the truck, the next step is to install the ramp.

Step 1. Slide the ramp all the way into the storage bracket and install safety bolt (I), on the right side of the bracket using M16 lock nut (J). SEE FIG. 4

NOTE: When pushing the ramp into the bracket, be sure the ramp does not get impeded by the dolly shipped inside the bracket.

Step 2. Attach two long 11mm bolts (K) and two 11mm lock nuts (B) to the brackets underneath the ramp, then attach the dolly. Once dolly is attached, the walk ramp should move freely in the walk ramp bracket. SEE FIG. 5.

FIG. 4

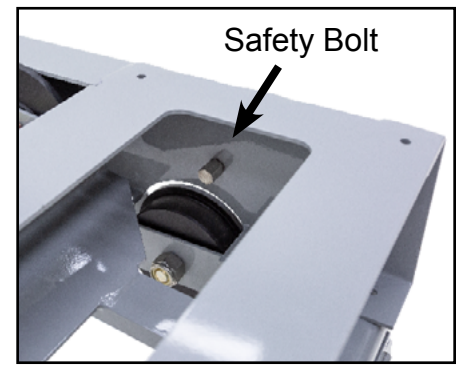
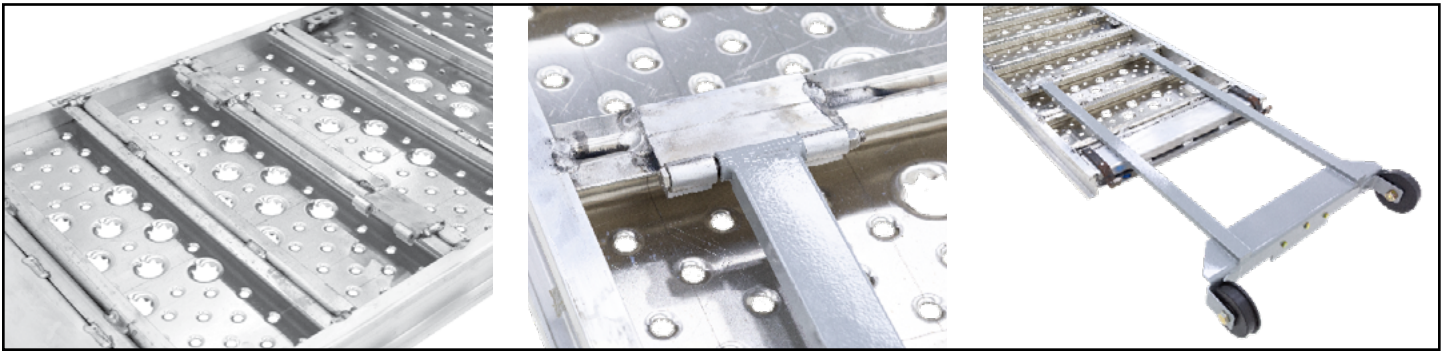


FIG. 5.



Step 3. Push the walk ramp entirely into the walk ramp bracket, close the door and secure the latch.

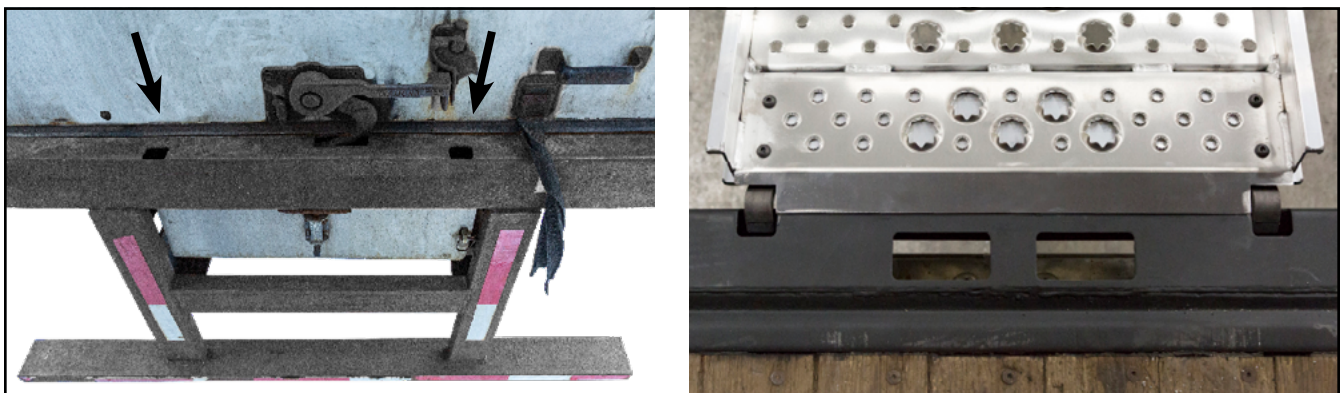
Step 4. The stainless latch fits through the storage bracket door and can accommodate a padlock if desired (not included). SEE FIG. 6.

FIG. 6



Step 5. Cut two holes on the truck door sill that align with the hooks on the walk ramp. This allows you to hook the ramp into place for use. Cutouts may be reinforced with steel bar stock. SEE FIG. 7.

FIG. 7



GENERAL GUIDELINES & SAFETY



- It is the user's responsibility to read and follow all instructions.
- Keep these instructions with the product at all times and review before each use.
- It is the responsibility of this product's owner to furnish the instructions to any person that borrows or purchases the product.
- Inspect the product before use to ensure it is assembled properly and all parts are in safe working order and free of defects.
- Never modify this product in any way.
- All circumstances cannot be addressed in these instructions.
- Please use common sense and practice general safety measures when using this product.
- Parts and/or instructions are subject to change without notice.
- The ramp storage bracket is for use with 01-26-WALK-HOOK series hook-end aluminum walk ramps.
- Walk ramps are designed for hand trucks and foot traffic only. Follow all safety guidelines and weight capacity limits indicated on the ramp.
- The ramp storage bracket must be welded to the truck frame. Angle brackets may need to be fabricated for proper spacing depending on the truck. Each truck has its own setup and safety considerations beyond the scope of these instructions. Use a professional for installation if you do not have the ability to do so safely.

PRODUCT WARRANTY & LIABILITY

GENERAL PRODUCT WARRANTY: Products purchased from the Authorized Dealer (original place of purchase) or Merchant ("Dealer") will be free of defects in material and workmanship at the time of receipt, and will meet the specifications stated at the place of purchase transaction or online at the Dealer's website, under normal use and service when correctly installed, operated and maintained. This product warranty is effective for the period of time stated below, unless otherwise stated in the product instructions or depicted in the product advertisement. All Authorized Dealer warranties are NON-TRANSFERABLE and cover only the original end purchaser. This limited warranty does not cover products purchased through non-authorized dealers. Non-authorized dealer receipts are not accepted for warranty verification.

*****WARRANTY CLAIMS MUST BE MADE DIRECTLY TO THE ORIGINAL PLACE OF PURCHASE.*****

WARRANTY PERIOD: This warranty remains in force for five years from the date of the product's accepted delivery. The Authorized Dealer offers a one year manufacturer's warranty for most products unless otherwise specified on the product advertisement.

WARRANTY SERVICE: The Authorized Dealer will replace any defective or malfunctioning part at no charge, including payment of the shipping costs of parts or replacement product to and from the manufacturer. The purchaser is responsible for labor charges. If the product does not meet specifications as depicted in the advertisement, the Authorized Dealer will refund the full purchase price of the product.

Questions regarding the warranty on a specific product and warranty claims should be directed to the Authorized Dealer with whom the purchase transaction was made.

WARRANTY LIMITATIONS: The above warranty does not apply to products that are repaired, modified or altered by any party other than the Authorized Dealer; are subjected to unusual physical stress or conditions (such as overloaded ramps or corrosion), natural disaster, governmental actions, wars, strikes, labor disputes, riots, theft, vandalism, terrorism or any reason beyond reasonable control; are damaged due to improper installation, misuse, abuse, accident or negligence in use, storage, transportation or handling, or tampering; or to products that are considered consumable items or items requiring repair or replacement due to normal wear and tear.

Product should be inspected prior to signing for delivery. Product damage incurred during shipping, unless noted on the Bill of Lading at the time of delivery, renders this warranty void.

LIMITED LIABILITY: In no event shall **THE AUTHORIZED DEALER** be liable to the purchaser or any third party for any indirect, incidental, consequential, special, exemplary or punitive damages arising out of the use of the product, including, without limitation, property damage, loss of value of the product or any third party products that are used in or with the product, or loss of use of the product or any third party products that are used in or with the product.

