



## **HITCH-MOUNTED RECEIVER HITCH CRANE** **- 1,000 lb. Capacity**

Instructions for Part # HMC-1000

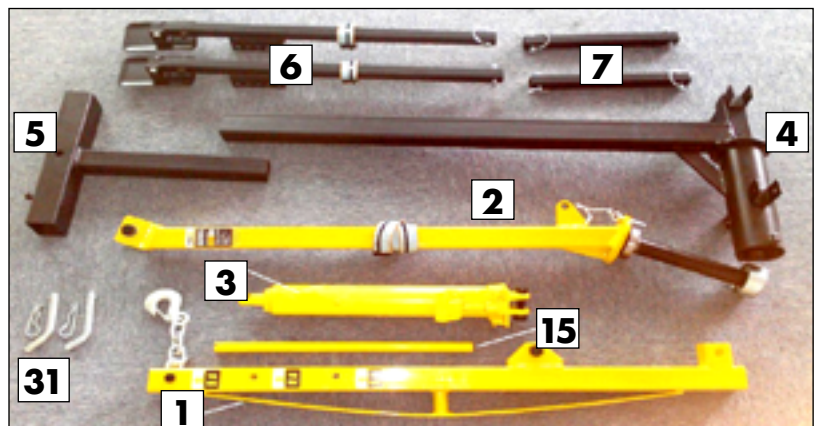
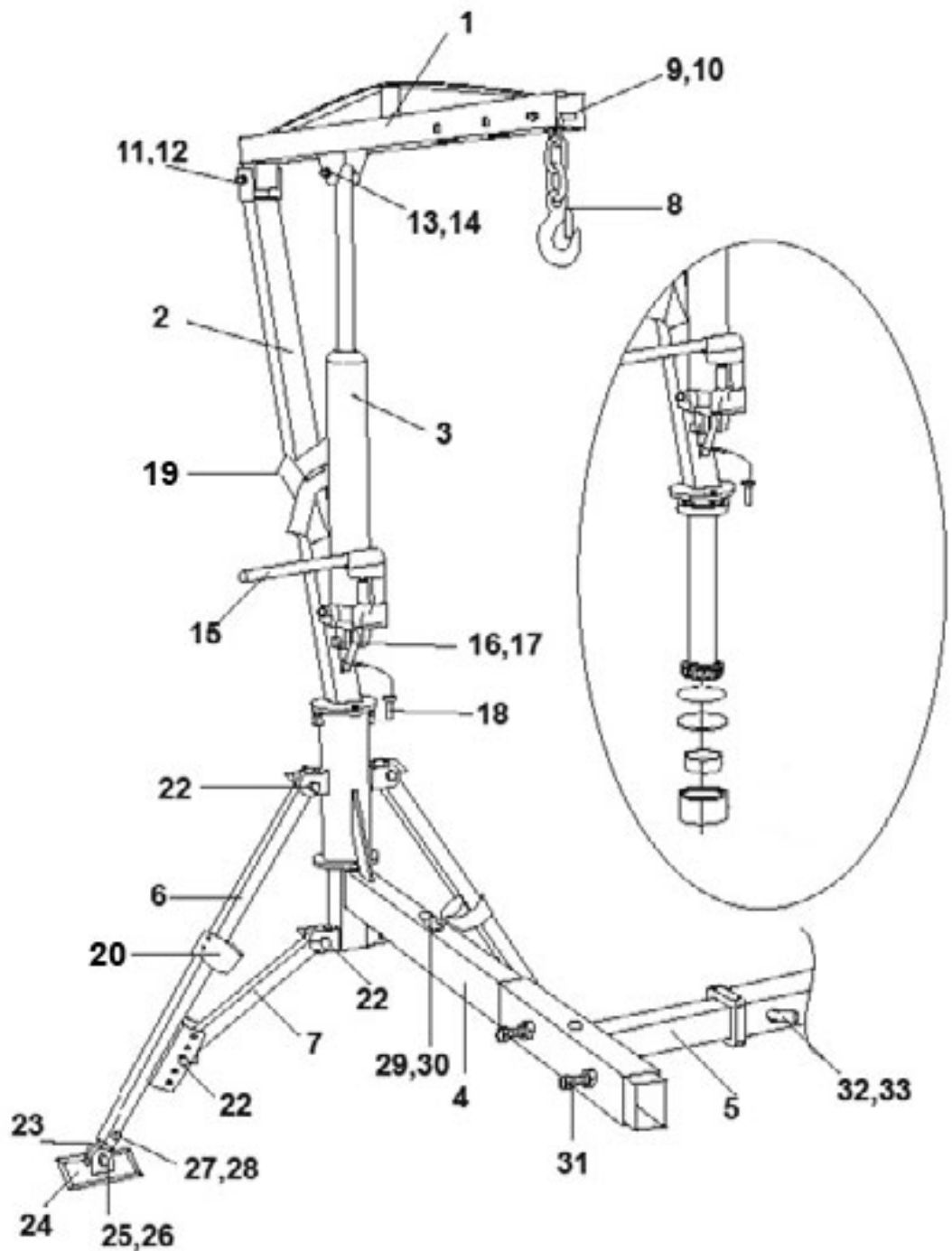


### **GENERAL GUIDELINES & SAFETY**

- It is the user's responsibility to read and follow all instructions.
- Keep these instructions with the product at all times and review before each use.
- It is the responsibility of this product's owner to furnish the instructions to any person that borrows or purchases the product.
- Inspect the product before use to ensure it is assembled properly and all parts are in safe working order and free of defects.
- Never modify this product in any way.
- All circumstances cannot be addressed in these instructions. Please use common sense and practice general safety measures when using this product.
- Parts and/or instructions are subject to change without notice.
- Never exceed 1,000 lb. max rated weight capacity.
- Never exceed vehicle trailer hitch tongue weight capacity of your vehicle.
- Please check your owner's manual for vehicle hauling capabilities and weight ratings.
- Not recommend for use with hitch adapters or extensions.
- Will not work with Class II or smaller receivers.
- Do not use near oncoming traffic; only set up the crane when the pickup truck is off the road, in a clearly visible location.
- Before lifting cargo into the truck bed, make sure the truck's engine is OFF with automatic transmission in park or manual transmission in gear.
- Chock all vehicle wheels for added safety.
- Adhere to all Department of Transportation (D.O.T.) requirements when using this product.
- Note the position of the vehicle's exhaust pipes before setting up the Crane; flammable goods being lifted by the Crane could come in contact with hot exhaust pipes and catch fire.
- Crane must be level to hitch receiver height and on level ground.
- While assembling and using the Crane keep work area clean, well lit, and free of spectators and children.
- Crane is for lifting purposes only, not for supporting loads. Quickly support load with jack stands or equivalent, if immediate loading or unloading isn't possible.
- Never leave a suspended load unattended.
- Never wear loose-fitting clothing or jewelry when working. Contain long hair; keep hair, clothing and gloves away from moving parts.
- When attaching load to crane hook, use appropriately rated couplings and fully engage on the hook with safety latch closed.
- Never lift people or animals.
- When operating the crane, stay clear of the area between the crane and the load.
- Be mindful, and avoid when possible, a dynamic loading situation where the cargo temporarily exceeds the weight capacity due to sudden motion as this can result in damage to the crane, the cargo, and/or personal injury.
- When not in use, remove the crane from the vehicle's receiver hitch and store in a secure place out of reach of children.

## PARTS

| Part | Description        | Qty. |
|------|--------------------|------|
| 1    | Boom               | 1    |
| 2    | Post               | 1    |
| 3    | Long Ram Jack      | 1    |
| 4    | Base Assembly      | 1    |
| 5    | T-Shaped Connector | 1    |
| 6    | Leg                | 2    |
| 7    | Link Bar           | 2    |
| 8    | Hook w/Chain       | 1    |
| 9    | Bolt               | 1    |
| 10   | Lock Nut           | 1    |
| 11   | Bolt               | 1    |
| 12   | Lock Nut           | 1    |
| 13   | Bolt               | 1    |
| 14   | Lock Nut           | 1    |
| 15   | Jack Handle        | 1    |
| 16   | Bolt               | 1    |
| 17   | Lock Nut           | 1    |
| 18   | Stop Pin           | 1    |
| 19   | Strap              | 1    |
| 20   | Strap              | 2    |
| 21   | Snapper Pin        | 6    |
| 22   | Leg Extender       | 2    |
| 23   | Foot Plate         | 2    |
| 24   | Pivot              | 2    |
| 25   | Lock Nut           | 2    |
| 26   | Bolt               | 2    |
| 27   | Lock Nut           | 2    |
| 28   | Bolt               | 2    |
| 29   | R-Pin              | 1    |
| 30   | Hitch Pin          | 1    |
| 31   | Jam Bolt           | 2    |
| 32   | Safety Pin         | 1    |
| 33   | Hitch Pin          | 1    |

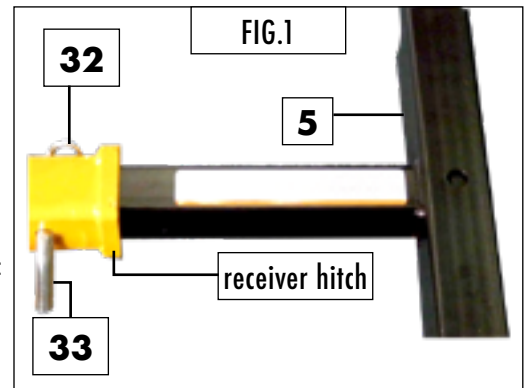


# CRANE ASSEMBLY INSTRUCTIONS

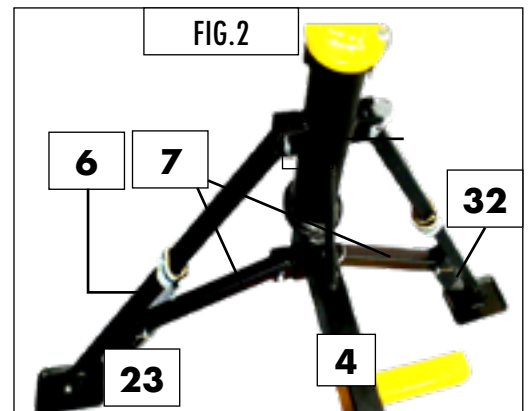
**NOTE:** Component parts are heavy. Be careful not to pinch fingers when handling this product. Assistance from a helper will make product set-up much easier.

**STEP 1.** Set all components on the ground and identify each part using the Parts list.

**STEP 2.** Insert shank of T-Shaped Connector (5) into the pickup truck's 2" x 2" Class III or IV receiver hitch and secure with Hitch Pin (33) and Safety Pin (32). SEE FIG. 1.



**STEP 3.** Attach the two Legs (6) and two Link Bars (7) to the Base Assembly (4) with the Snapper Pins (22). The Link Bar (7) connects the middle portion of each Leg to the Base Assembly, and the Link Bar hole attachment position will affect the height of the straight tube of the Base Assembly. SEE FIG 2.



**STEP 4.** Adjust the height of the straight tube of the Base Assembly (4) until it matches the height of the vehicle's receiver hitch. This is done by adjusting the Leg Extenders (23) and Link Bars (7) during the Leg (6) assembly. Reposition the Bolts and Lock Nuts of Leg Extenders to set the height, then secure the Link Bars in place with the Snapper Pins.

**STEP 5.** Attach the upper end of each Leg (6) to the Base Assembly (4) using Snapper Pins (22).

**STEP 6.** With Leg assembly now complete, slide the end of straight tube section of Base Assembly into the T-Shaped Connector (5). Lock these components together by tightening two Bolts (31).

**STEP 7.** Test the stability of the bottom half of the Crane. Make sure Foot Plates (24) are flat on the ground. Make sure that the T-Shaped Connector (5) is solidly connecting the Crane to the vehicle's receiver hitch. The straight tube section of the Base Assembly (4) should be parallel to the ground. Make sure all hardware and clips are tightly secured in place.

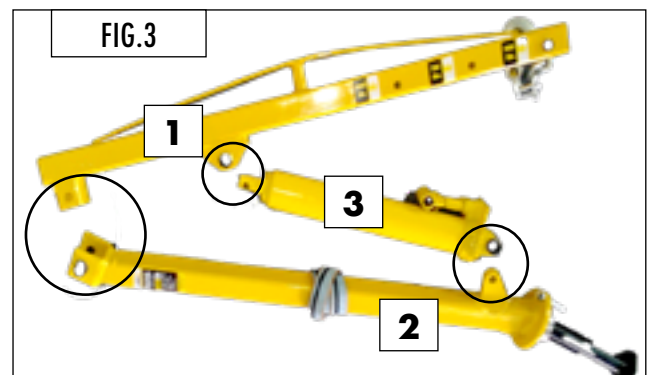
**STEP 8.** Assemble the Boom (1), Post (2) and Long Ramp Jack (3) together with bolts and nuts. SEE FIG. 3

A. Attach the Long Ram Jack to the Post with Bolt (16) and Nut (17).

B. Attach the Boom to the Post with Bolt (11) and Nut (12).

C. Attach the Long Ram Jack to the Boom with Bolt (13) and Nut (13).

**STEP 9.** Once the three components are assembled, make sure they are folded together and held in place with the adhesive strap. With assistance, carefully lift the Boom/Post/Long Ram Jack assembly into place on top of the Base Assembly (4). This is a gravity fitting with no hardware connections. Note the Stop Pin (18). The Boom can swivel from side to side; Stop Pin is inserted in either Stop 1 (19) or Stop 2 (20) location. SEE FIG 4.



**STEP 10.** Remove the adhesive strap and open up the Boom (1).

# CRANE OPERATION INSTRUCTIONS

## Before Operation

- Properly and safely position the Crane on the pickup truck; position the cargo next to the Crane.
- Know the weight of the cargo to be lifted.
- The cargo must be properly strapped and have attachment couplings that will attach to the Crane's Hook.
- The lift range of the Crane is between 30" off the ground to 84" high.



**STEP 1.** Attach the Hook with Chain (8) to the correct maximum weight capacity on the Boom (1) by repositioning it as needed and replacing the Bolt and Lock Nut. The weight of the cargo must fall below the maximum weight setting chosen (500 Lbs., 750 Lbs., and 1,000 Lbs.).

**STEP 2.** Swing the Boom (1) so that it is facing the cargo to be lifted.

**STEP 3.** Before using the Jack Handle (15) to raise and lower the Boom, identify the location of the hydraulic release valve. With the use of the Jack Handle, close the release valve completely (turn clockwise all the way) before attempting to raise the Boom. Now insert Jack Handle and pump handle to raise Boom.

**STEP 4.** Raise the Boom (1) as previously described (close release valve completely and pump Jack Handle), or lower the Boom as needed.

**NOTE:** Slowly turning the release valve counterclockwise will lower the Boom. Be alert as the Boom will quickly descend to its lowest position.

**STEP 7.** Attach the cargo to the Boom's Hook.

**STEP 8.** Use the Jack Handle to close the hydraulic release valve (turn clockwise completely), and then pump Jack Handle to slowly raise the Boom and the cargo.

**STEP 9.** With the cargo raised, the Post (2) can be pivoted to move the cargo into the truck bed.

**STEP 10.** With the cargo positioned over the truck bed, slowly turn the hydraulic release valve counterclockwise and the cargo will be lowered to the truck bed.

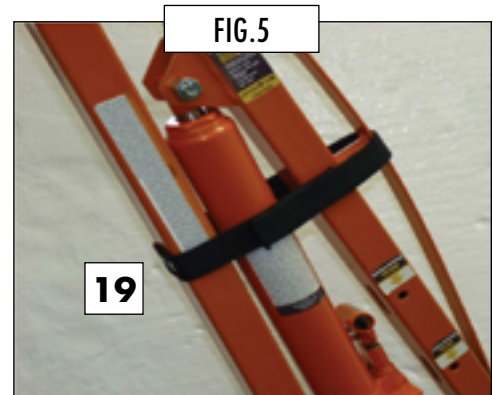
**STEP 11.** Remove the cargo's coupler from the Boom Hook and swing back the Boom to its original position.

**STEP 12.** When work is done, disassemble the Crane by first lowering the Boom to its lowest position, then removing the Jack Handle (15).

**STEP 13.** Fold the Boom (1) to its closed position and with assistance, lift it off the Base Assembly.

**STEP 14.** Disconnect the Crane from the pickup truck by removing the T-Shaped Connector from the vehicle's receiver hitch.

**STEP 15.** Fold up the Legs (6) and use the Storage Straps (19 and 20) to hold the folded components in place while not in use. SEE FIG. 5.



# **CRANE MAINTENANCE**

- Frequently check the condition of the Crane and the pickup truck's receiver hitch. Make sure all components are in good condition. If the Crane or receiver hitch becomes damaged through accident, or if any other type of damage is noted, they should be replaced.
- Check to make sure that all hardware is tightly secured in place.
- Keep the Crane clean and periodically lubricate moving parts.
- Replace hydraulic oil at least once per year, or more, if Crane is frequently used). Only use good quality hydraulic oil and never mix different brands of oil together. See steps below.
- If you notice that the efficiency of the Long Ram Jack is decreasing, it may be due to air being trapped within the hydraulic system and needs to be bled of excess air. See steps below.

## **TO CHANGE HYDRAULIC OIL:**

**STEP 1.** Remove the Jack from the Crane. Lower Jack's ram completely.

**STEP 2.** Locate the oil fill plug on the side of the Jack and remove it.

**STEP 3.** Drain the old oil from the hydraulic system.

**STEP 4.** Fill the hydraulic system with new high-quality hydraulic oil; fill to the lower edge of the fill hole.

**STEP 5.** Bleed air from the hydraulic system (see previous Instructions STEP 3).

**STEP 6.** Top off the hydraulic system with more oil.

## **TO BLEED THE HYDRAULIC SYSTEM:**

**STEP 1.** Use the Jack Handle to open the air release valve; turn Jack Handle about 1.5 turns counterclockwise.

**STEP 2.** Remove the pliable oil fill plug on the side of the Jack. Carefully turn it and pull it out.

**STEP 3.** Pump the Jack Handle rapidly for several cycles to remove excess air from the system.

**STEP 4.** Turn the air release valve clockwise to close the system.

**STEP 5.** Carefully replace the oil fill plug.





# **PRODUCT WARRANTY & LIABILITY**

**GENERAL PRODUCT WARRANTY:** Products purchased from the Authorized Dealer (original place of purchase) or Merchant ("Dealer") will be free of defects in material and workmanship at the time of receipt, and will meet the specifications stated at the place of purchase transaction or online at the Dealer's website, under normal use and service when correctly installed, operated and maintained. This product warranty is effective for the period of time stated below, unless otherwise stated in the product instructions or depicted in the product advertisement. All Authorized Dealer warranties are NON-TRANSFERABLE and cover only the original end purchaser. This limited warranty does not cover products purchased through non-authorized dealers. Non-authorized dealer receipts are not accepted for warranty verification.

**\*\*\*WARRANTY CLAIMS MUST BE MADE DIRECTLY TO THE ORIGINAL PLACE OF PURCHASE.\*\*\***

**WARRANTY PERIOD:** This warranty remains in force for one year from the date of the product's accepted delivery. The Authorized Dealer offers a one year manufacturer's warranty for most products unless otherwise specified on the product advertisement.

**WARRANTY SERVICE:** The Authorized Dealer will replace any defective or malfunctioning part at no charge, including payment of the shipping costs of parts or replacement product to and from the manufacturer. The purchaser is responsible for labor charges. If the product does not meet specifications as depicted in the advertisement, the Authorized Dealer will refund the full purchase price of the product.

Questions regarding the warranty on a specific product and warranty claims should be directed to the Authorized Dealer with whom the purchase transaction was made.

**WARRANTY LIMITATIONS:** The above warranty does not apply to products that are repaired, modified or altered by any party other than the Authorized Dealer; are subjected to unusual physical stress or conditions (such as overloaded ramps or corrosion), natural disaster, governmental actions, wars, strikes, labor disputes, riots, theft, vandalism, terrorism or any reason beyond reasonable control; are damaged due to improper installation, misuse, abuse, accident or negligence in use, storage, transportation or handling, or tampering; or to products that are considered consumable items or items requiring repair or replacement due to normal wear and tear.

Product should be inspected prior to signing for delivery. Product damage incurred during shipping, unless noted on the Bill of Lading at the time of delivery, renders this warranty void.

**LIMITED LIABILITY:** In no event shall **THE AUTHORIZED DEALER** be liable to the purchaser or any third party for any indirect, incidental, consequential, special, exemplary or punitive damages arising out of the use of the product, including, without limitation, property damage, loss of value of the product or any third party products that are used in or with the product, or loss of use of the product or any third party products that are used in or with the product.