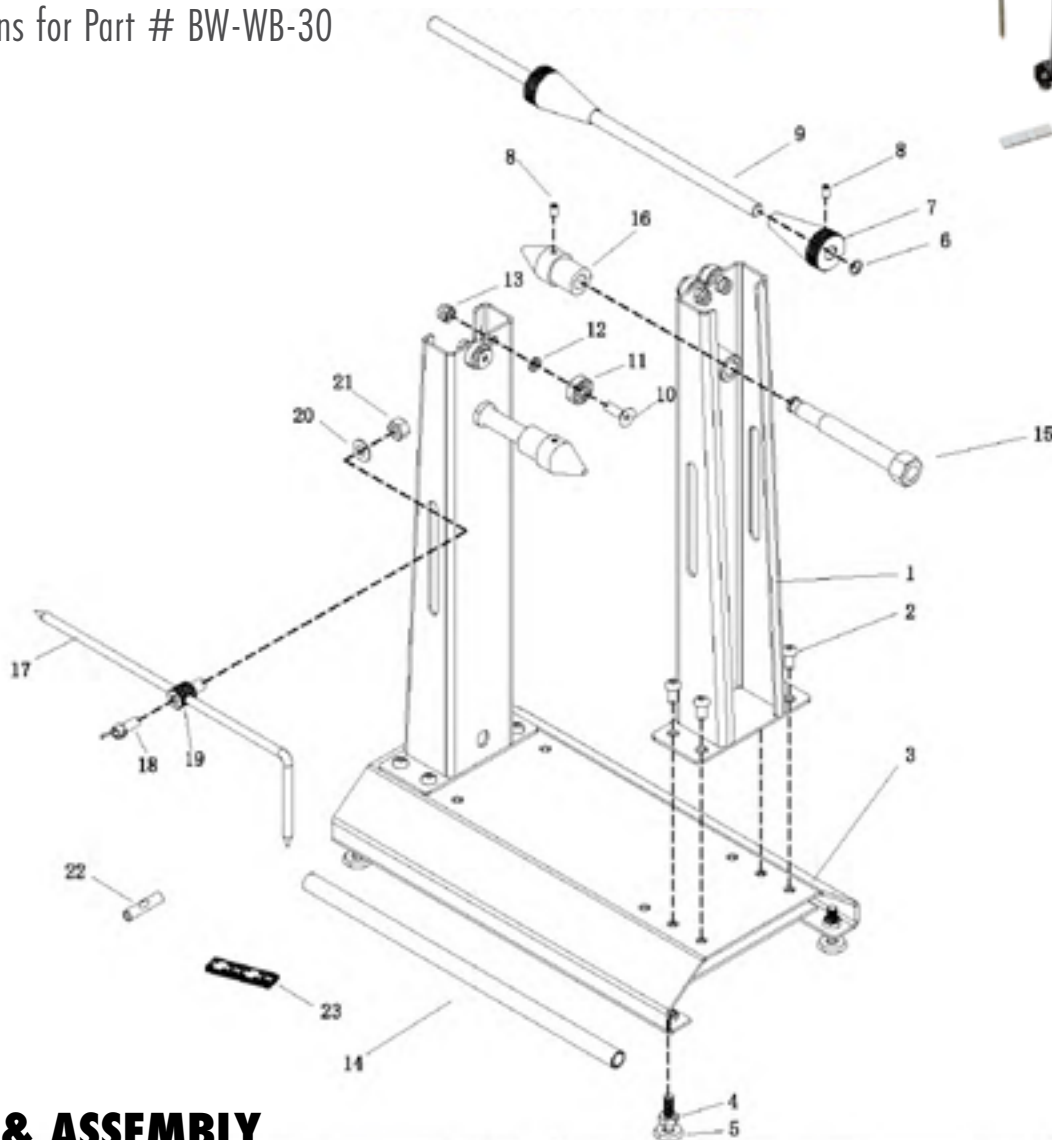




# MOTORCYCLE WHEEL BALANCER & TRUING STAND

Instructions for Part # BW-WB-30



## **PARTS & ASSEMBLY**

**TOOLS REQUIRED (NOT INCLUDED):** 13mm wrench, 14mm wrench, 2.4mm Allen wrench, 5mm Allen wrench, 3/4" socket wrench

Part	Description	Qty.
1	Support Arm	2
2	Bolt M8X12	8
3	Base	1
4	Spacers	4
5	Leveling Foot	4
6	O-Ring	2
7	Centering Cone A	2
8	Screw M6X10	4

Part	Description	Qty.
9	Axle	1
10	Bolt M825	4
11	Bearing	4
12	Spring Washer	4
13	Lock Nut M8	4
14	Alignment Tube	1
15	Centering Cone Bolt	2
16	Centering Cone B	2

Part	Description	Qty.
17	Truing Arm	1
18	Wing Screw	1
19	Truing Arm Adjustment Bolt	1
20	M10 Washer	1
21	Nut M10	1
22	Level	1
23	Balance Weight	1

# INSTALLATION

**STEP 1.** Flip the base upside down and install the four leveling feet with one nut per foot. Adjust the feet accordingly for uneven surfaces using the level. See FIG 1a and 1b.



**STEP 2.** Insert the alignment tube through both support arms, assuring the centering pins will meet perfectly. Failure to perform this step could offset pins by 2mm - 5mm. See FIG 2.

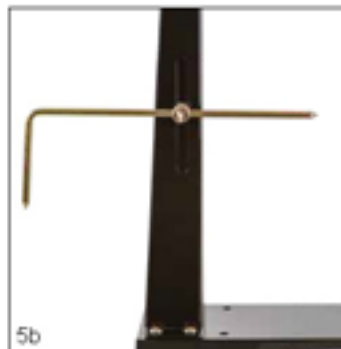


**STEP 3.** Attach both support arms in the desired positions using eight Allen head screws. Tighten with a 5mm Allen wrench, then remove the alignment tube. See FIG 3a and 3b.

**STEP 4.** Install the centering pins into the support arms. Tighten the pins with a 2.5mm Allen wrench. See FIG 4a and 4b.



**STEP 5.** Install the truing arm adjustment bolt into the slot on either support arm with one nut. Insert the truing arm, then apply the wing screw to secure in place. See FIG 5a and 5b.

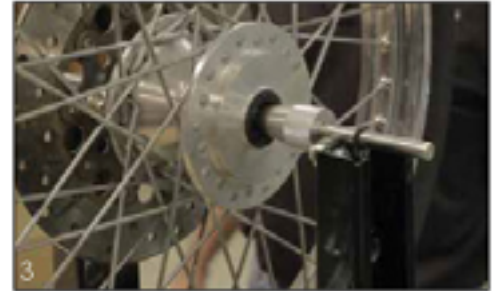
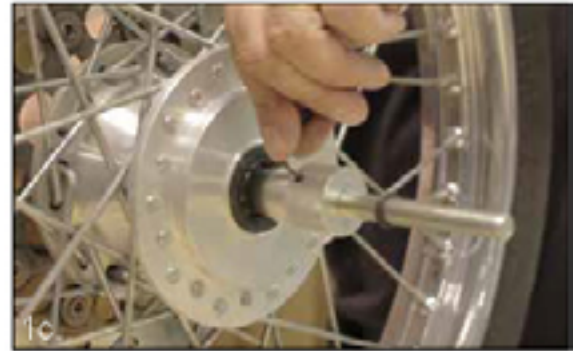


**STEP 6.** Rest the axle on top of the support arms. Tighten the cones with a 2.5mm Allen wrench. See FIG 6.



## **WHEEL BALANCING**

**STEP 1.** Remove the centering cone and rubber stopper from the axle. Slide it through the center of the wheel. Put the cone and rubber stopper back on the axle. Slide the cones in place and tighten with a 2.5mm Allen wrench. Maximum wheel size is 7" wide by 35" diameter. See FIG 1a, 1b and 1c.



**STEP 2.** Before resting the axle on the bearings, make sure the base is level using a level. See FIG 2a and 2b.

**STEP 3.** Rest the axle with the tire on the bearings. The rubber stoppers should be positioned just outside the bearings. See FIG 3.

**STEP 4.** Check the balance by turning the wheel 90 degrees either way and let go. If the wheel is out of balance, the heavy side will rotate to the bottom. Once the wheel has stopped moving, mark the top or light side.

**STEP 5.** Add or remove the appropriate amount of weights to counter balance the wheel. When the wheel stops rotating on its own, then it's balanced. See FIG 5.



## **WHEEL TRUING**

**STEP 1.** Remove the axle from the wheel and install one centering pin. Tighten the pin with a 2.5mm Allen wrench. Slide the tire into the pin and install the other centering pin, then tighten with the 2.5mm Allen wrench. Tighten the centering pins with a 3/4" socket wrench. See FIG 1a, 1b and 1c.





**STEP 2.** Install and adjust the truing arm so that it is just shy of touching the wheel. Slowly spin the wheel in either direction. Adjust the spokes where the arm touches the tire or appears to drift away. See FIG 2a, 2b and 2c.



## GENERAL GUIDELINES & SAFETY



- It is the user's responsibility to read and follow all instructions.
- Keep these instructions with the product at all times and review before each use.
- It is the responsibility of this product's owner to furnish the instructions to any person that borrows or purchases the product.
- Inspect the product before use to ensure it is assembled properly
- and all parts are in safe working order and free of defects.
- Never modify this product in any way.
- All circumstances cannot be addressed in these instructions.
- Please use common sense and practice general safety measures when using this product.
- Parts and/or instructions are subject to change without notice.

## PRODUCT WARRANTY & LIABILITY

**GENERAL PRODUCT WARRANTY:** Products purchased from the Authorized Dealer (original place of purchase) or Merchant ("Dealer") will be free of defects in material and workmanship at the time of receipt, and will meet the specifications stated at the place of purchase transaction or online at the Dealer's website, under normal use and service when correctly installed, operated and maintained. This product warranty is effective for the period of time stated below, unless otherwise stated in the product instructions or depicted in the product advertisement. All Authorized Dealer warranties are NON-TRANSFERABLE and cover only the original end purchaser. This limited warranty does not cover products purchased through non-authorized dealers. Non-authorized dealer receipts are not accepted for warranty verification.

**\*\*\*WARRANTY CLAIMS MUST BE MADE DIRECTLY TO THE ORIGINAL PLACE OF PURCHASE.\*\*\***

**WARRANTY PERIOD:** This warranty remains in force for one year from the date of the product's accepted delivery. The Authorized Dealer offers a one year manufacturer's warranty for most products unless otherwise specified on the product advertisement.

**WARRANTY SERVICE:** The Authorized Dealer will replace any defective or malfunctioning part at no charge, including payment of the shipping costs of parts or replacement product to and from the manufacturer. The purchaser is responsible for labor charges. If the product does not meet specifications as depicted in the advertisement, the Authorized Dealer will refund the full purchase price of the product.

Questions regarding the warranty on a specific product and warranty claims should be directed to the Authorized Dealer with whom the purchase transaction was made.

**WARRANTY LIMITATIONS:** The above warranty does not apply to products that are repaired, modified or altered by any party other than the Authorized Dealer; are subjected to unusual physical stress or conditions (such as overloaded ramps or corrosion), natural disaster, governmental actions, wars, strikes, labor disputes, riots, theft, vandalism, terrorism or any reason beyond reasonable control; are damaged due to improper installation, misuse, abuse, accident or negligence in use, storage, transportation or handling, or tampering; or to products that are considered consumable items or items requiring repair or replacement due to normal wear and tear. Product should be inspected prior to signing for delivery. Product damage incurred during shipping, unless noted on the Bill of Lading at the time of delivery, renders this warranty void.

**LIMITED LIABILITY:** In no event shall **THE AUTHORIZED DEALER** be liable to the purchaser or any third party for any indirect, incidental, consequential, special, exemplary or punitive damages arising out of the use of the product, including, without limitation, property damage, loss of value of the product or any third party products that are used in or with the product, or loss of use of the product or any third party products that are used in or with the product.

