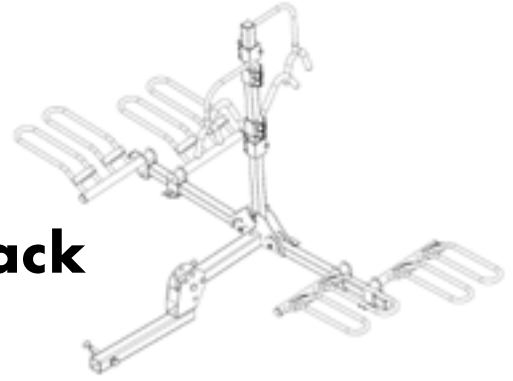




# Hitch Mounted 4 Bike Platform Rack

Instructions for Part # BC-4078-4



## **GENERAL GUIDELINES & SAFETY**

- It is the user's responsibility to read and follow all instructions.
- Keep these instructions with the product at all times and review before each use.
- It is the responsibility of this product's owner to furnish the instructions to any person that borrows or purchases the product.
- Inspect the product before use to ensure it is assembled properly and all parts are in safe working order and free of defects.
- Never modify this product in any way.
- All circumstances cannot be addressed in these instructions .
- Please use common sense and practice general safety measures when using this product.
- Parts and/or instructions are subject to change without notice.
- Make sure bike rack is properly secured on hitch mount and bikes are properly secured. Do not use if there is a problem with fit.
- Never exceed the 4-bike/120-lb. max weight capacity of bike rack.
- Do not exceed the weight limit assigned to inside rack (50 lbs) or outside rack (30 lbs) positions.
- For 2" hitches with 2.5" wheel holder. Make sure bike tires are away from the exhaust to avoid damage.
- During transport, periodically check all hardware and straps to ensure they are secured properly.
- Use caution when backing up; take the extra length added to the vehicle into consideration.
- Do not create excessive downward vertical force on any part of the carrier. This can create force beyond the carrier's load capacity and cause damage to the carrier, bikes, and/or vehicle.
- Always check local DOT ordinances regarding the use of hitch racks. In some regions it may be illegal to cover or obscure the license plate and tail lights.

## **IMPORTANT**

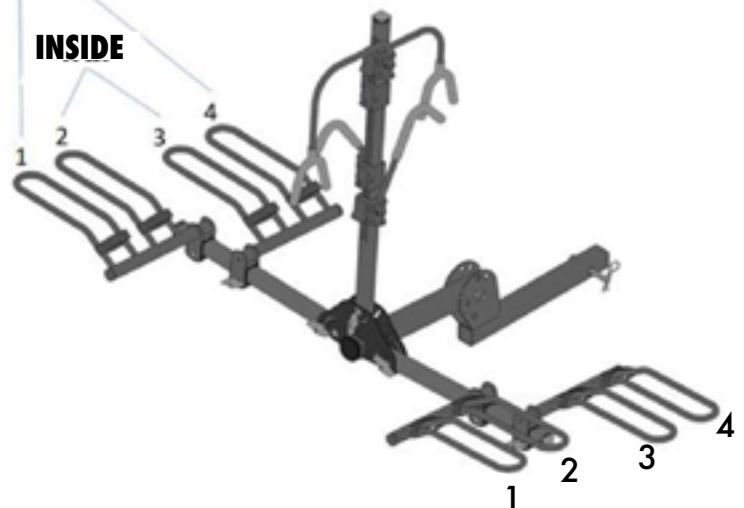
**30 lbs Weight Limit Outside Racks (1,4)**

**50 lbs Weight Limit Inside Racks (2,3)**

**OUTSIDE**

Weight Limit Per Bike Position

**INSIDE**

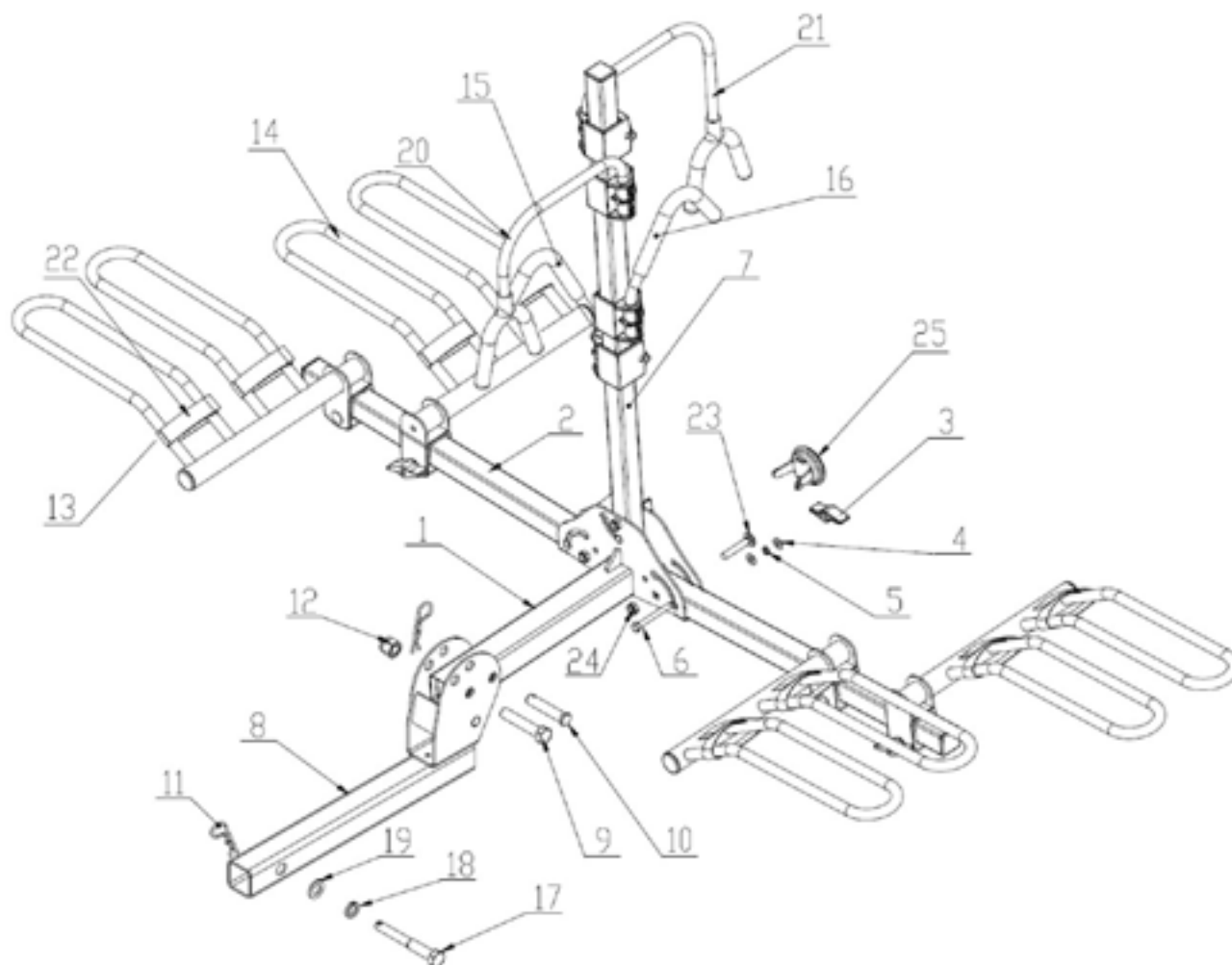


# PARTS

**TOOLS NEEDED FOR ASSEMBLY (NOT INCLUDED):** 17 MM Wrench, 24 MM Wrench

Part	Description	Qty.
1	Support Base Assembly	1
2	Horizontal Tube	2
3	5/16" knob	3
4	5/16" flat washer	6
5	5/16" spring washer	3
6	5/16" hexagon bolt	3
7	Vertical Tube	1
8	Folding Shank	1
9	M16 Bolt	1
10	5/8" Pin	1
11	Clip	2
12	M16 Locknut	1
13	Left Cradle Assembly	2

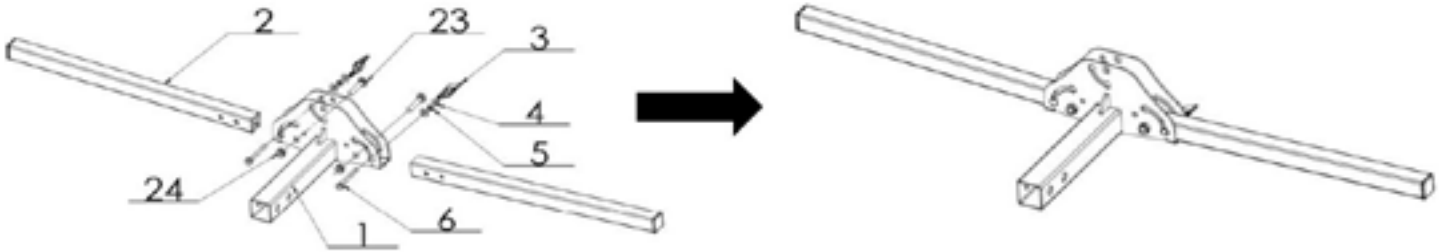
Part	Description	Qty.
14	Right Cradle Assembly	2
15	Long J-Hook Assembly	1
16	Short J-Hook Assembly	1
17	Stabilizing Pin	1
18	16 Spring Washer	1
19	16 Flat Washer	1
20	Short Y-Hook AssemblyV	1
21	Long Y-Hook Assembly	1
22	Wheel Cradle Strap	8
23	M10 carriage bolt	3
24	M10 Locknut	3
25	Reflector	1



# ASSEMBLY INSTRUCTIONS

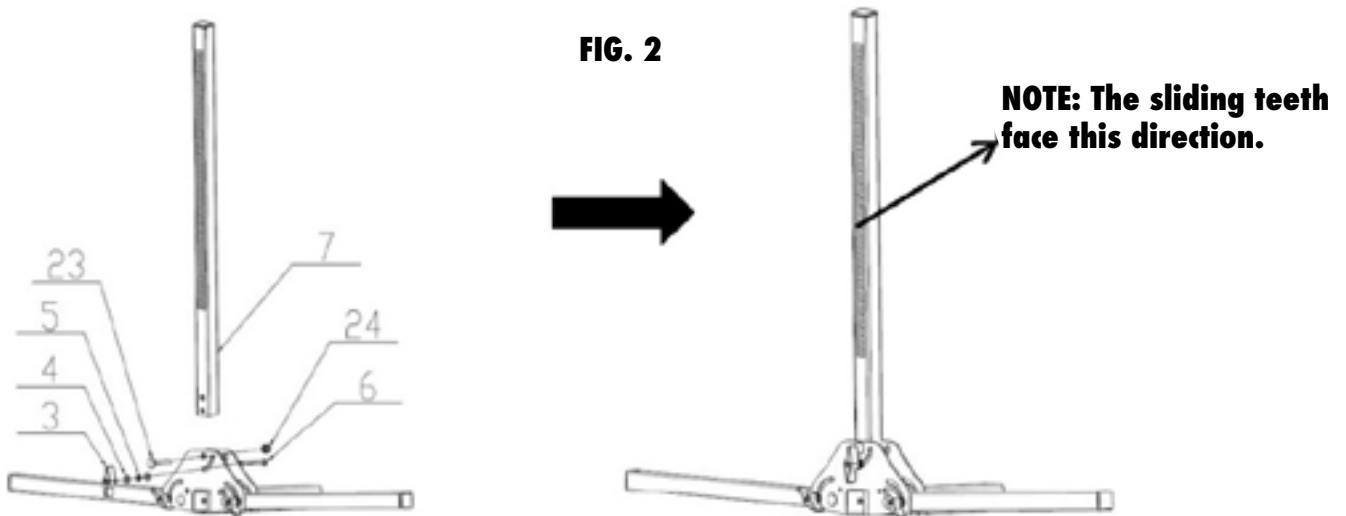
**STEP 1.** Assemble the primary frame by connecting the Support Base Assembly (part #1) and (2) Horizontal Tubes (part #2) using (2) 5/16" knob, (4) 5/16" flat washer, (2) 5/16" spring washer, (2) 5/16" hexagon bolt, (2) M10 Carriage bolts and (2) M10 Locknuts (parts #3, #4, #5, #6, #23 & #24). See FIG. 1

**FIG. 1**



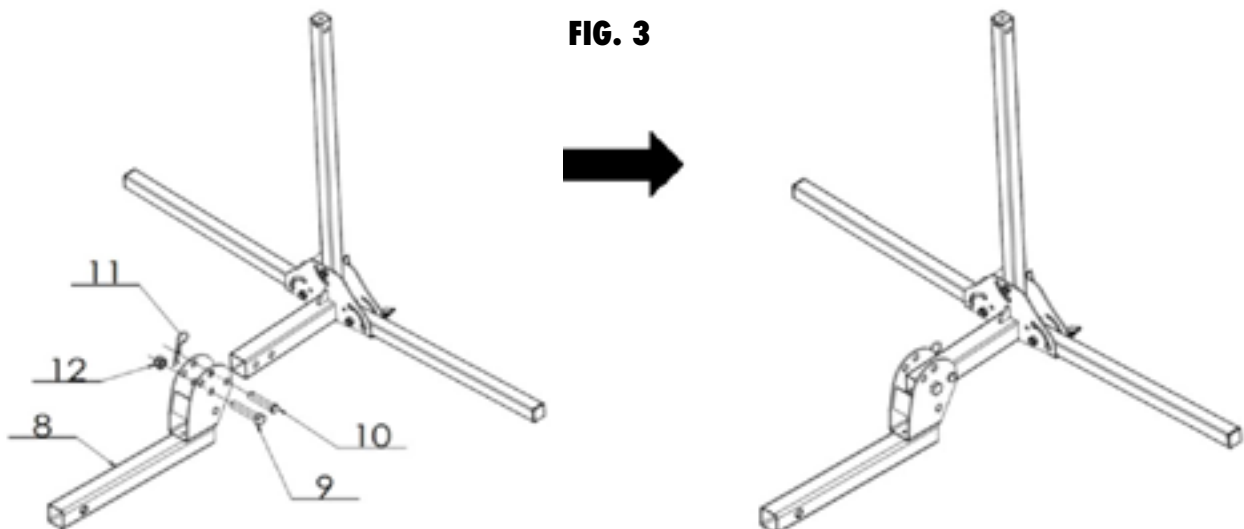
**STEP 2.** Place Vertical Tube (part #7) into the Support Base Assembly by using M10 Carriage Bolt and M10 Locknut (parts #23 & #24). With the Vertical Tube in a vertical position, insert the 5/16" hexagon bolt (part #6), through the 5/16" flat washer (part #4), the 5/16" spring washer (part #5) and the 5/16" flat washer (part #4), tighten with 5/16" knob (part #3). See FIG. 2

**FIG. 2**



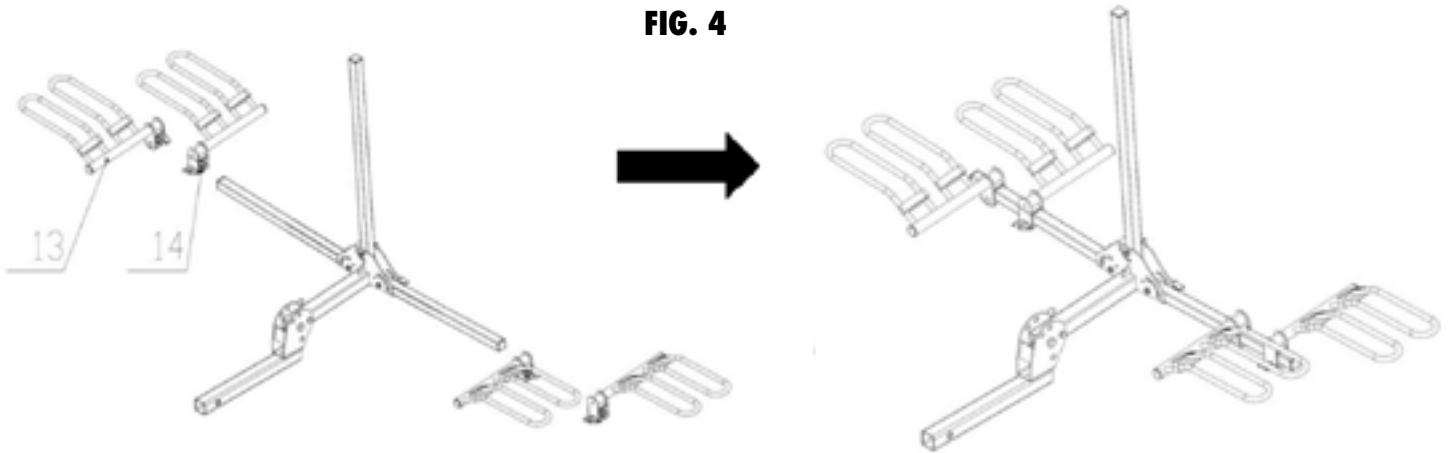
**STEP 3.** Attach Folding Shank (part #8) to Support Base Assembly tube, using M16 Bolt, M16 Locknut, 5/8" pin and Clip (parts #9, #12, #10 & #11) for added safety. See FIG. 3

**FIG. 3**



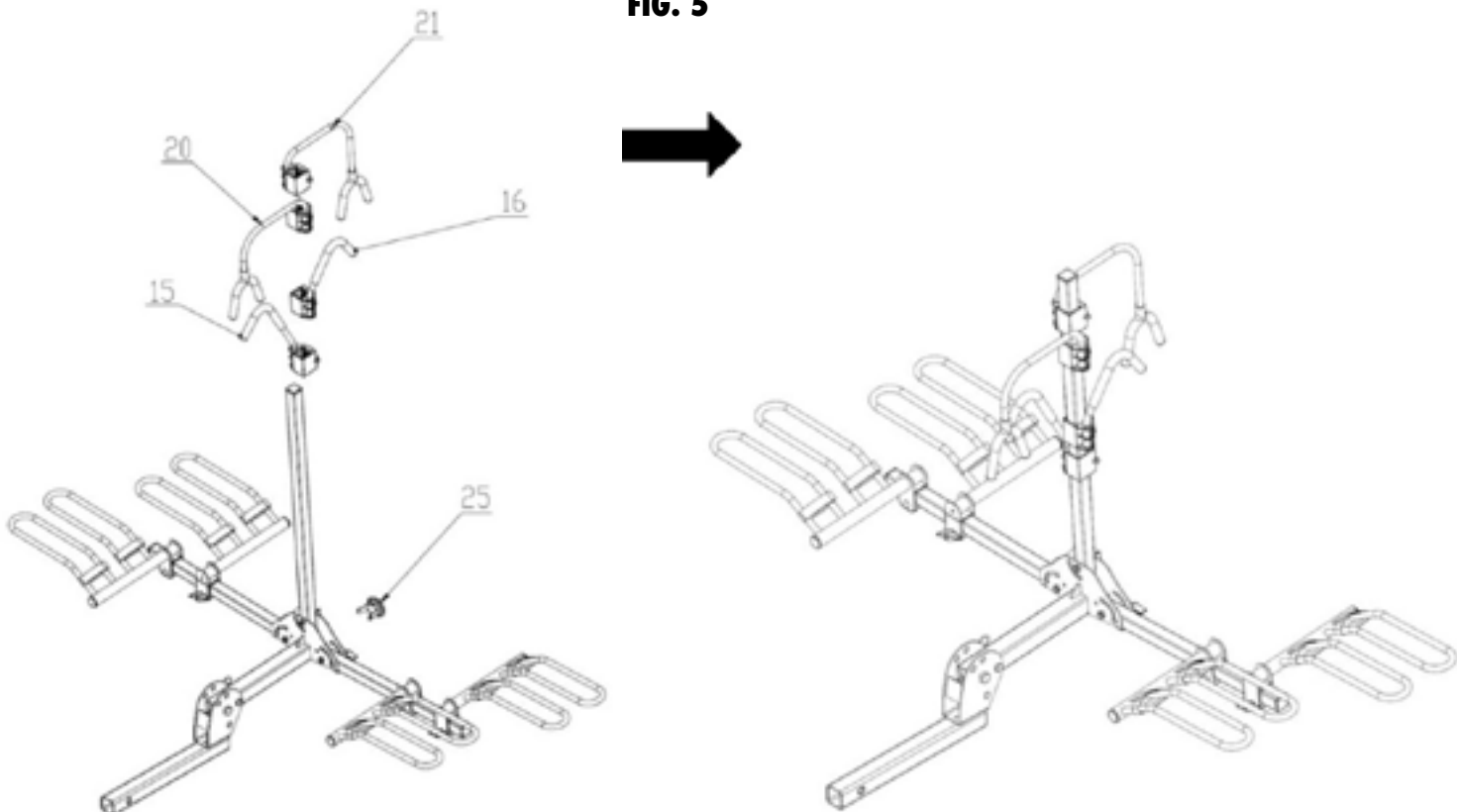
**STEP 4.** Slide the Left and Right Cradle Assemblies (parts #13 & #14) onto Horizontal Tubes. Release the knob of the left and right cradle. The knob should be facing up and the loop end of cradle should be facing outward and upward. Insert the cradles in sequence as shown below in Fig 4. After all 4 cradles are on the Horizontal Tubes, tighten. See FIG. 4

**FIG. 4**



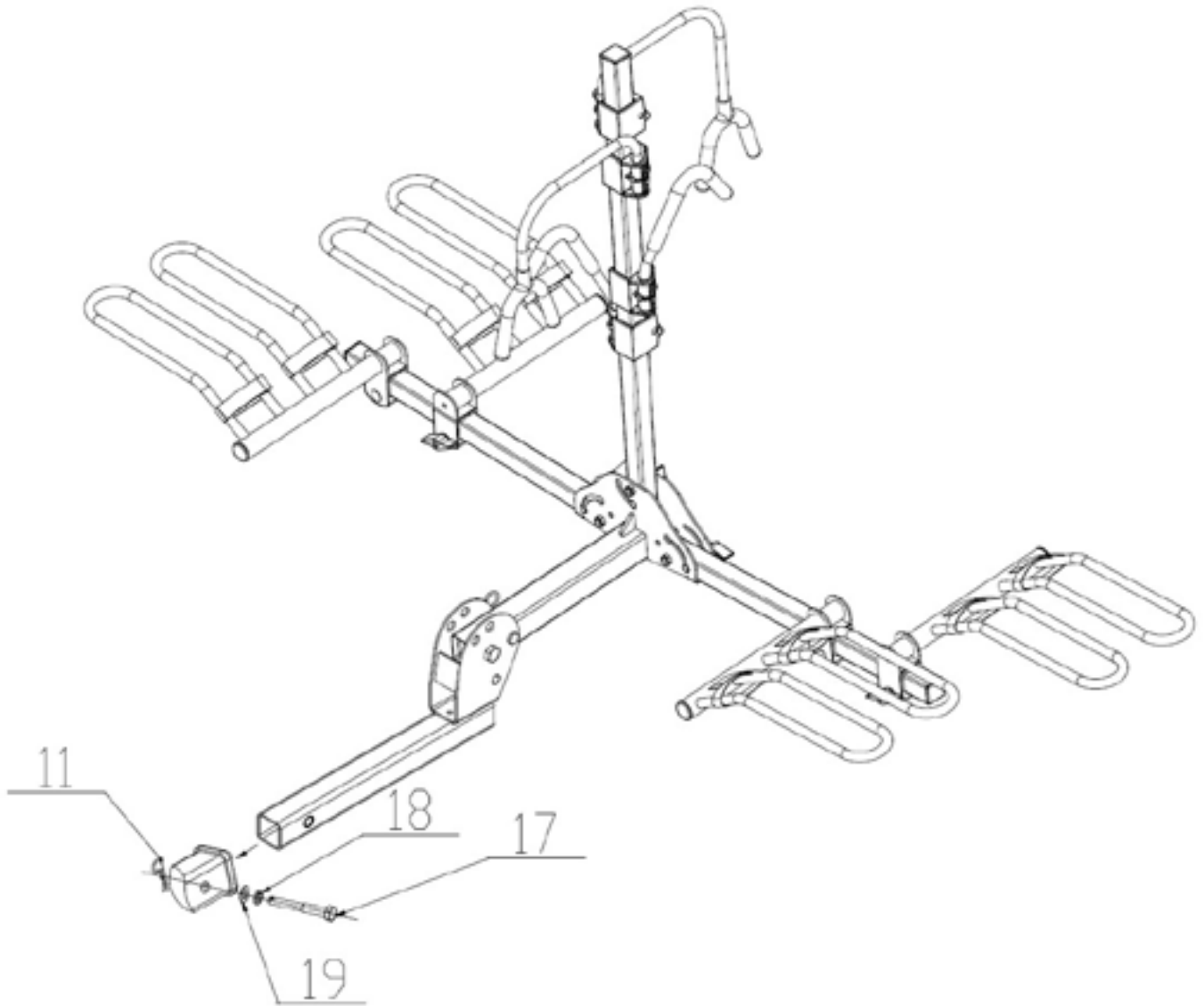
**STEP 5.** Install the Long J-Hook Assembly (part #15), Short J-Hook Assembly (part #16), Short Y-Hook Assembly (part #20) and Long Y-Hook Assembly (part #21) onto the Vertical Tube. Insert the Reflector (part #25) into the hole of the square tube. See FIG. 5

**FIG. 5**



**STEP 6.** Insert Folding Shank into 2" receiver, using Stabilizing Pin, 16 Spring Washer, 16 Flat Washer, and Clip (parts #17, #18, #19 & #11) to secure. See FIG. 6

**FIG. 6**



## **PRODUCT WARRANTY & LIABILITY**

**GENERAL PRODUCT WARRANTY:** Products purchased from the Authorized Dealer (original place of purchase) or Merchant ("Dealer") will be free of defects in material and workmanship at the time of receipt, and will meet the specifications stated at the place of purchase transaction or online at the Dealer's website, under normal use and service when correctly installed, operated and maintained. This product warranty is effective for the period of time stated below, unless otherwise stated in the product instructions or depicted in the product advertisement. All Authorized Dealer warranties are NON-TRANSFERABLE and cover only the original end purchaser. This limited warranty does not cover products purchased through non-authorized dealers. Non-authorized dealer receipts are not accepted for warranty verification.

**\*\*\*WARRANTY CLAIMS MUST BE MADE DIRECTLY TO THE ORIGINAL PLACE OF PURCHASE.\*\*\***

**WARRANTY PERIOD:** This warranty remains in force for one year from the date of the product's accepted delivery. The Authorized Dealer offers a one year manufacturer's warranty for most products unless otherwise specified on the product advertisement.

**WARRANTY SERVICE:** The Authorized Dealer will replace any defective or malfunctioning part at no charge, including payment of the shipping costs of parts or replacement product to and from the manufacturer. The purchaser is responsible for labor charges. If the product does not meet specifications as depicted in the advertisement, the Authorized Dealer will refund the full purchase price of the product.

Questions regarding the warranty on a specific product and warranty claims should be directed to the Authorized Dealer with whom the purchase transaction was made.

**WARRANTY LIMITATIONS:** The above warranty does not apply to products that are repaired, modified or altered by any party other than the Authorized Dealer; are subjected to unusual physical stress or conditions (such as overloaded ramps or corrosion), natural disaster, governmental actions, wars, strikes, labor disputes, riots, theft, vandalism, terrorism or any reason beyond reasonable control; are damaged due to improper installation, misuse, abuse, accident or negligence in use, storage, transportation or handling, or tampering; or to products that are considered consumable items or items requiring repair or replacement due to normal wear and tear.

Product should be inspected prior to signing for delivery. Product damage incurred during shipping, unless noted on the Bill of Lading at the time of delivery, renders this warranty void.

**LIMITED LIABILITY:** In no event shall **THE AUTHORIZED DEALER** be liable to the purchaser or any third party for any indirect, incidental, consequential, special, exemplary or punitive damages arising out of the use of the product, including, without limitation, property damage, loss of value of the product or any third party products that are used in or with the product, or loss of use of the product or any third party products that are used in or with the product.

