

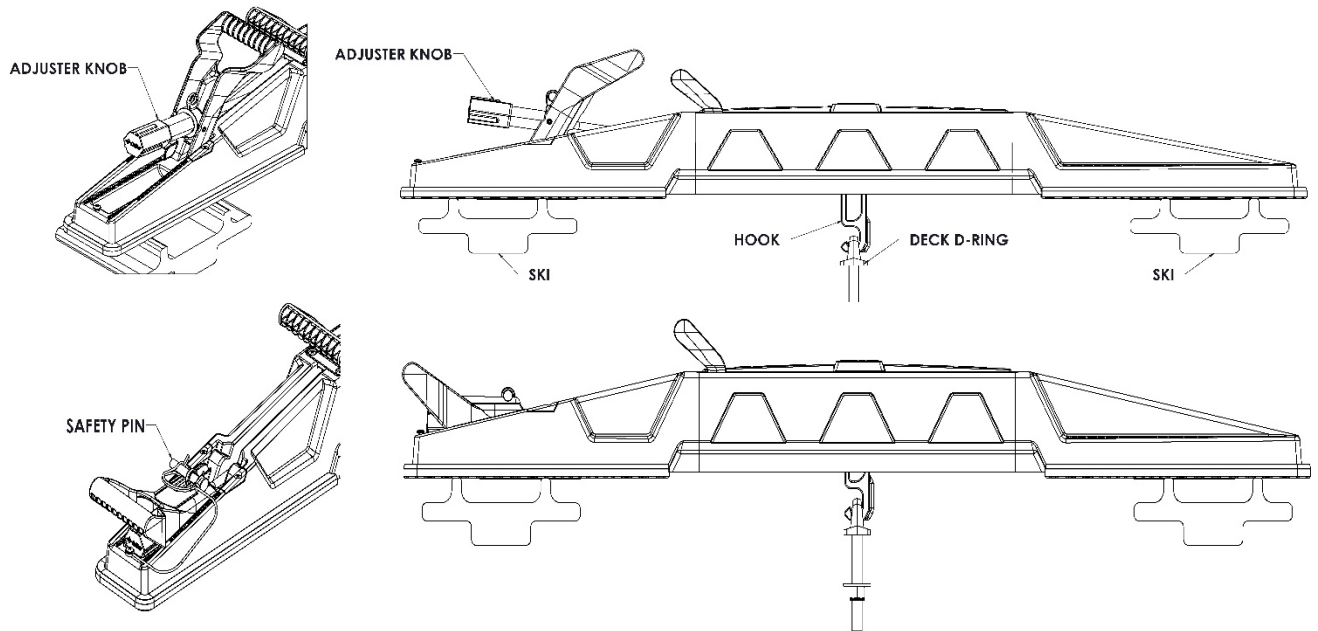


13600: Clamp Pro Snowmobile Clamp Installation Instructions

READ ALL INSTRUCTIONS CAREFULLY PRIOR TO INSTALLATION

⚠ WARNING:

- Read all instructions before use.
- Snowmobile Parking Brake **MUST** be applied during transportation.
- Rear of Snowmobile **MUST** be properly secure during transportation.
- **DO NOT** exceed 800 lbs. maximum snowmobile weight.
- **ALWAYS** secure handle with safety pin while in use.
- During transportation, **DO NOT** exceed the speed limit, avoid aggressive braking and stopping.
- Before initial use confirm proper installation of D-Ring.
- **DO NOT** over tension Clamp Pro Adjuster, excessive tension will cause damage.
- Caliber Inc. is **NOT** responsible for the use of this product.
- Always check Deck D-Ring for security.



Operating Clamp Pro:

1. Remove Safety Pin from Handle Assembly.
2. Center Snowmobile with Deck Ring
3. Place Clamp over Snowmobile Ski's.
 - a. Center with uniform contact on both skis.
4. Release Hook by moving Handle into open position.
5. Adjust the Hook depth and clamping force by turning the Adjuster Knob.
 - a. Clockwise to tighten; Counter-Clockwise to loosen.
 - b. Latching the Handle should not have excessive resistance.
6. Secure Snowmobile by pulling handle into closed position.
7. Secure Clamp by replacing Safety Pin. (optional Pad Lock)

CALIBER, INC. LIMITED LIFETIME WARRANTY: Caliber, Inc. warrants that this product will be free from defects in material or workmanship under normal use installation and service. Caliber, Inc. reserves the right, before having any obligation under this limited warranty, to inspect the damaged Caliber product. All warranty shipping costs for inspection shall be borne solely by the purchaser. This limited warranty is non-transferable. Contact Caliber, Inc. at www.caliberproductsinc.com or at 952-985-9999 for warranty service procedures

DISCLAIMER: Caliber, Inc. shall not be liable for any special, incidental or consequential damages, including, but not limited to, lost revenues, lost profits, personal injury, damage to property, and third-party claims, arising out of any warranty, contract, statutory or tort. Notwithstanding the term of any limited warranty or any warranty implied by law, or in the event that any limited warranty fails of its essential purpose, in no event will Caliber's entire liability exceed the purchase price of this product.

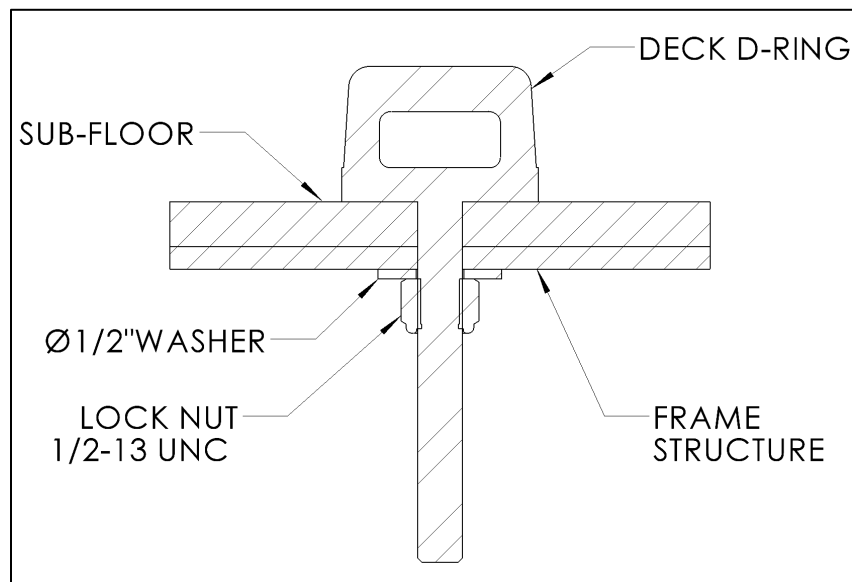


READ ALL INSTRUCTIONS CAREFULLY PRIOR TO INSTALLATION

⚠ WARNING:

- Read all instructions before use.
- Snowmobile Parking Brake **MUST** be applied during transportation.
- Rear of Snowmobile **MUST** be properly secure during transportation.
- **DO NOT** exceed 800 lbs. maximum snowmobile weight.
- **ALWAYS** secure handle with safety pin while in use.
- During transportation, **DO NOT** exceed speed limit, avoid aggressive braking and or stopping.
- Before initial use confirm proper installation of D-Ring.
- **DO NOT** over tension Clamp Pro Adjuster, excessive tension will cause damage.
- Caliber Inc. is **NOT** responsible for the use of this product.
- Always check Deck D-Ring for security.

Installing Deck D-Ring:



Caliber Inc. is not responsible for incorrect installation.

1. Determine proper position of snowmobile.
2. Deck D-Ring **MUST** be secured with a frame structure.
3. Drill Ø1/2" hole through all structural components.
4. Insert Deck D-Ring through mounting hole, fasten and secure with Washer and Lock Nut.

CALIBER, INC. LIMITED LIFETIME WARRANTY: Caliber, Inc. warrants that this product will be free from defects in material or workmanship under normal use installation and service. Caliber, Inc. reserves the right, before having any obligation under this limited warranty, to inspect the damaged Caliber product. All warranty shipping costs for inspection shall be borne solely by the purchaser. This limited warranty is non-transferable. Contact Caliber, Inc. at www.caliberproductsinc.com or at 952-985-9999 for warranty service procedures

DISCLAIMER: Caliber, Inc. shall not be liable for any special, incidental or consequential damages, including, but not limited to, lost revenues, lost profits, personal injury, damage to property, and third-party claims, arising out of any warranty, contract, statutory or tort. Notwithstanding the term of any limited warranty or any warranty implied by law, or in the event that any limited warranty fails of its essential purpose, in no event will Caliber's entire liability exceed the purchase price of this product.