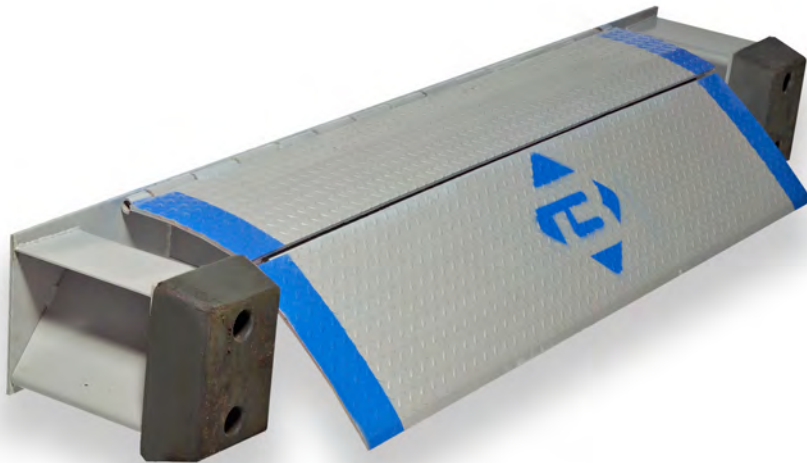




Dock Levelers Model EP

FAST AND EASY OPERATION

Fast and easy to operate, Bluff's Edge of Dock Leveler is positioned by lifting a self-storing handle and pulling the handle to the dock floor. The latch assembly activates the lip, moving it forward to the floor of the trailer as the handle is lifted. When released, the handle automatically returns to a stored position. The optimum dock height for conventional trailers is 51", while the proper dock height for refrigerated equipment is 55".



EDGE OF DOCK LEVELER (EP)

- Capacities from 20,000 to 30,000 pounds
- Widths of 66", 72" and 78"
- Automatically returns to stored position when truck leaves
- Self-storing handle
- Refrigerated lip optional
- Bumper and bumper blocks are included
- Steel faced bumpers available
- Hydraulic option can be retrofitted on existing units, or is available as an add-on option

EDGE OF DOCK LEVELER (MODEL EP)

