



Kayak Storage Rack with Paddle Hooks Instructions for Part # K-WR



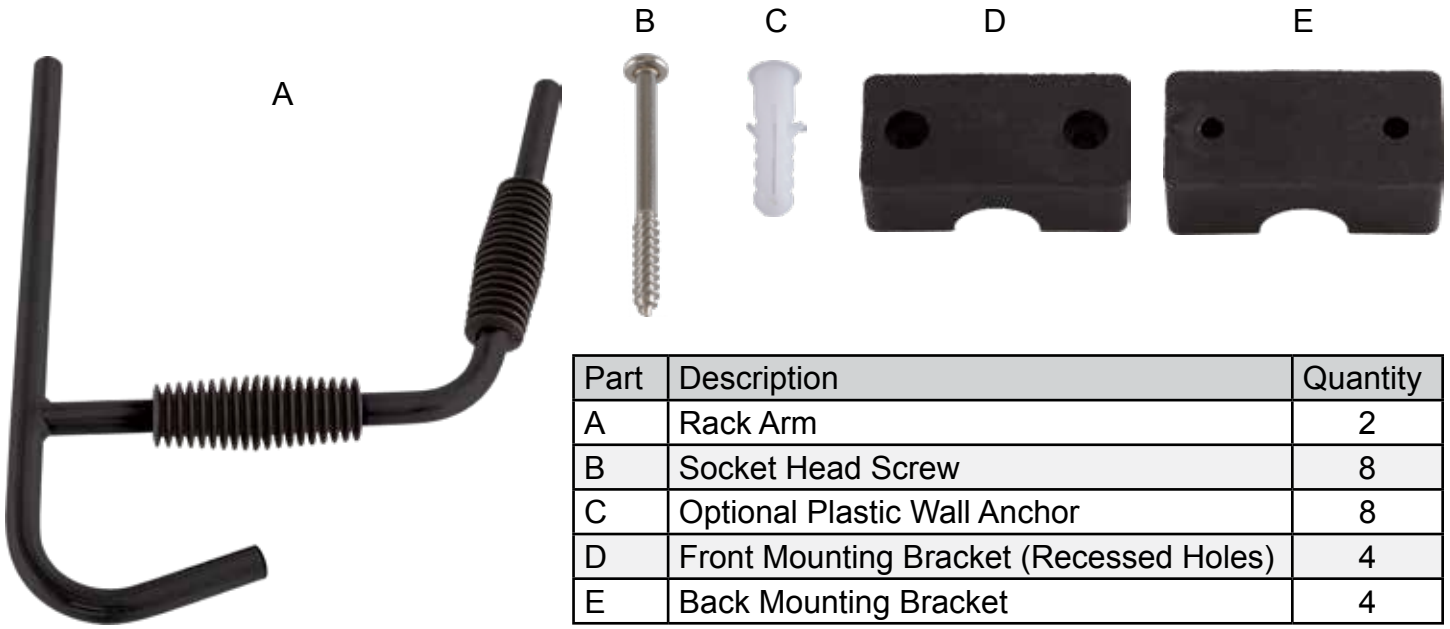
General Guidelines

- It is the user's responsibility to read and follow all instructions.
- Keep these instructions with the product at all times and review before each use.
- It is the responsibility of this product's owner to furnish the instructions to any person that borrows or purchases the product.
- Inspect the product before use to ensure it is assembled properly and all parts are in safe working order and free of defects.
- Never modify this product in any way.
- All circumstances cannot be addressed in these instructions. Please use common sense and practice general safety measures when using this product.
- Parts and/or instructions are subject to change without notice.

Safety

- The product weight capacity is 130 lbs evenly distributed.
- Before installation, make sure the mounting hardware will not interfere with any power lines or other obstructions. Drilling into electrical, gas, or water lines can result in serious injury or death.
- Make sure the wall that the rack is being installed into is in good condition and able to support the mounting hardware, rack, and any kayak that may be used with the rack.
- Do not install over a work area or walkway.
- Before lifting the kayak into the rack, make sure the area is clear of people, pets, and trip hazards.
- Check the rack before each use to make sure it is in good condition and properly attached to the wall.
- When not in use, the rack arms may be rotated sideways against the wall and out of the way.

Parts



Part	Description	Quantity
A	Rack Arm	2
B	Socket Head Screw	8
C	Optional Plastic Wall Anchor	8
D	Front Mounting Bracket (Recessed Holes)	4
E	Back Mounting Bracket	4

Tools Required

- Drill with 4mm socket bit and 8mm drill bit

Installation

Step 1. Locate a stable, sturdy section of wall with no obstructions for mounting the rack. (See safety guidelines.) Wall studs are ideal. If mounting to drywall, always use anchors.

Step 2. Measure out and mark where to install the screws so that the kayak rack will be level and hold as much of the kayak as possible without danger of it slipping off.

Step 3. Drill 8mm pilot holes where the screws will be installed as marked above. Install anchors if appropriate.

Step 4. Place a set of mounting brackets around the upper part of the kayak rack arm, making sure the bracket with the recessed hole is facing out. Insert the screws through the brackets into the pilot holes, then tighten securely with a drill. Repeat on the bottom part of the kayak rack arm, then repeat with the second kayak rack arm.



Product Warranty and Liability

GENERAL PRODUCT WARRANTY: Products purchased from the Authorized Dealer (original place of purchase) or Merchant (“Dealer”) will be free of defects in material and workmanship at the time of receipt, and will meet the specifications stated at the place of purchase transaction or online at the Dealer’s website, under normal use and service when correctly installed, operated and maintained. This product warranty is effective for the period of time stated below, unless otherwise stated in the product instructions or depicted in the product advertisement. **All Authorized Dealer warranties are NON-TRANSFERABLE** and cover only the original end purchaser. This limited warranty does not cover products purchased through non-authorized dealers. Non-authorized dealer receipts are not accepted for warranty verification.

*****Warranty claims must be made directly to the original place of purchase.*****

WARRANTY PERIOD: This warranty remains in force for one year from the date of the product’s accepted delivery. The Authorized Dealer offers a one year manufacturer’s warranty for most products unless otherwise specified on the product advertisement.

WARRANTY SERVICE: The Authorized Dealer will replace any defective or malfunctioning part at no charge, including payment of the shipping costs of parts or replacement product to and from the manufacturer. The purchaser is responsible for labor charges. If the product does not meet specifications as depicted in the advertisement, the Authorized Dealer will refund the full purchase price of the product.

Questions regarding the warranty on a specific product and warranty claims should be directed to the Authorized Dealer with whom the purchase transaction was made.

WARRANTY LIMITATIONS: The above warranty does not apply to products that are repaired, modified or altered by any party other than the Authorized Dealer; are subjected to unusual physical stress or conditions (such as overloaded ramps or corrosion), natural disaster, governmental actions, wars, strikes, labor disputes, riots, theft, vandalism, terrorism or any reason beyond reasonable control; are damaged due to improper installation, misuse, abuse, accident or negligence in use, storage, transportation or handling, or tampering; or to products that are considered consumable items or items requiring repair or replacement due to normal wear and tear.

Product should be inspected prior to signing for delivery. Product damage incurred during shipping, unless noted on the Bill of Lading at the time of delivery, renders this warranty void.

LIMITED LIABILITY: In no event shall THE AUTHORIZED DEALER be liable to the purchaser or any third party for any indirect, incidental, consequential, special, exemplary or punitive damages arising out of the use of the product, including, without limitation, property damage, loss of value of the product or any third party products that are used in or with the product, or loss of use of the product or any third party products that are used in or with the product.

