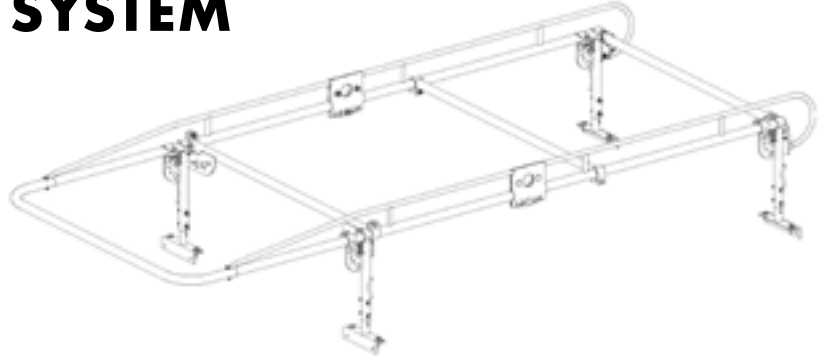




SERVICE TRUCK RACK SYSTEM

- 1000 LB Cap.

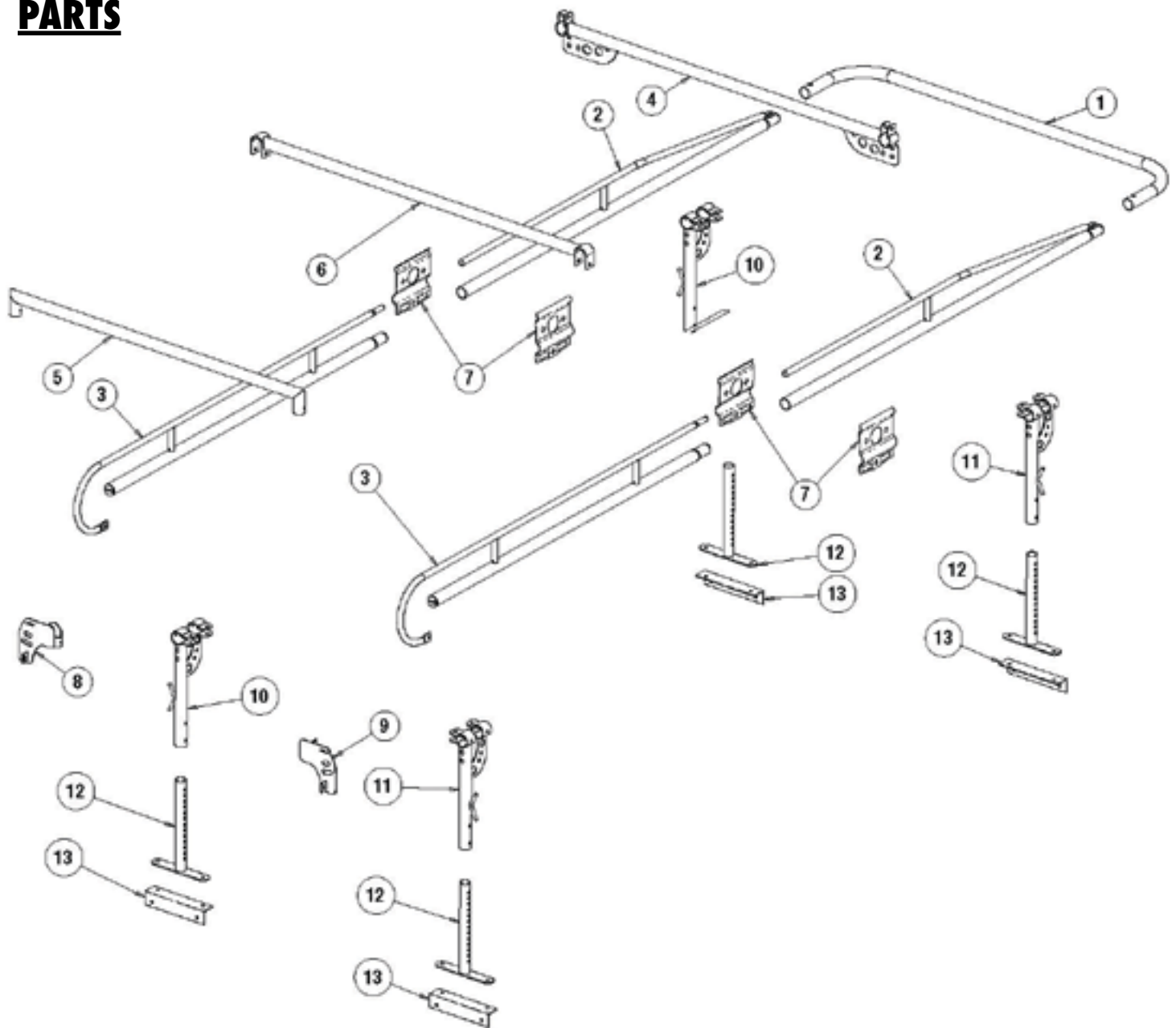
Instructions for Part #UST-RACK



GENERAL GUIDELINES & SAFETY

- It is the user's responsibility to read and follow all instructions.
- Keep these instructions with the product at all times and review before each use.
- It is the responsibility of this product's owner to furnish the instructions to any person that borrows or purchases the product.
- Inspect the product before use to ensure it is assembled properly and all parts are in safe working order and free of defects.
- Never modify this product in any way.
- All circumstances cannot be addressed in these instructions.
- Please use common sense and practice general safety measures when using this product.
- Parts and/or instructions are subject to change without notice.
- Ladder rack is rated at 1,000 lbs. Do not exceed this limit for any reason and never exceed the Gross Vehicle Weight Rating (GVWR) or Gross Axle Weight Rating (GAWR) as set by the vehicle manufacturer.
- All payloads must be securely fastened for transportation.
- Do not cut rear side rails for any reason.
- Never use the ladder rack with the rear cross bar removed. This will affect the structural integrity of the rack.
- Use caution carrying a payload on the ladder rack. Always load the ladder rack as low and even as possible. Any payload carried above the floor of the truck's bed will increase the tendency of the vehicle to rollover.
- Double check that the holes are clear of all tail lights, wiring, box handle hardware and there is room to mount the angles.
- **AT LEAST TWO PEOPLE ARE NECESSARY TO INSTALL THIS RACK**

PARTS



Part	Description	Qty.
1	Front Hoop	1
2	Rail, Side, Front	2
3	Rail, Side, Rear	2
4	Crossbar, Front	1
5	Crossbar, Rear	1
6	Crossbar, Center	1
7	Plate, Connector, Side Rail	4
8	Bracket, Crossbar Mount, Rear Ds	1
9	Bracket, Crossbar Mount, Rear Ps	1

Part	Description	Qty.
10	Leg, Ps	2
11	Leg, Ds	2
12	Foot Assembly	4
13	Angle, Mount, Support	4
	Hardware Kit	1
	Silicone Tube	1

INSTRUCTIONS

1. Verify Rack Will Fit Your Truck Body – Fig. 1

A. Determine where the rack will be mounted.

Depending on your truck, the rack may be mounted on top of the boxes, on front and rear panels, or another location

B. Position the mounting angles on the truck in the position it will be mounted

C. Measure the distance between the Mounting Feet (12) and record it as distance X.

Fig. 1



2. Preassemble Rack (Figs. 2-5)

A. Install the Rear Legs onto the Rear Side Rails using M12x55 HHCS, flat washers and lock nuts.

B. Install the Driver Side and Passenger Side Rear Crossbar Mounting Brackets using (2) M10x25 HHCS with lock washers to attach to the Rear Rails and (2) M10x25 Carriage Bolts with lock nuts to attach the grab handle.

C. Assemble the Rear Crossbar to the Rear Rails using the Latch Pins.

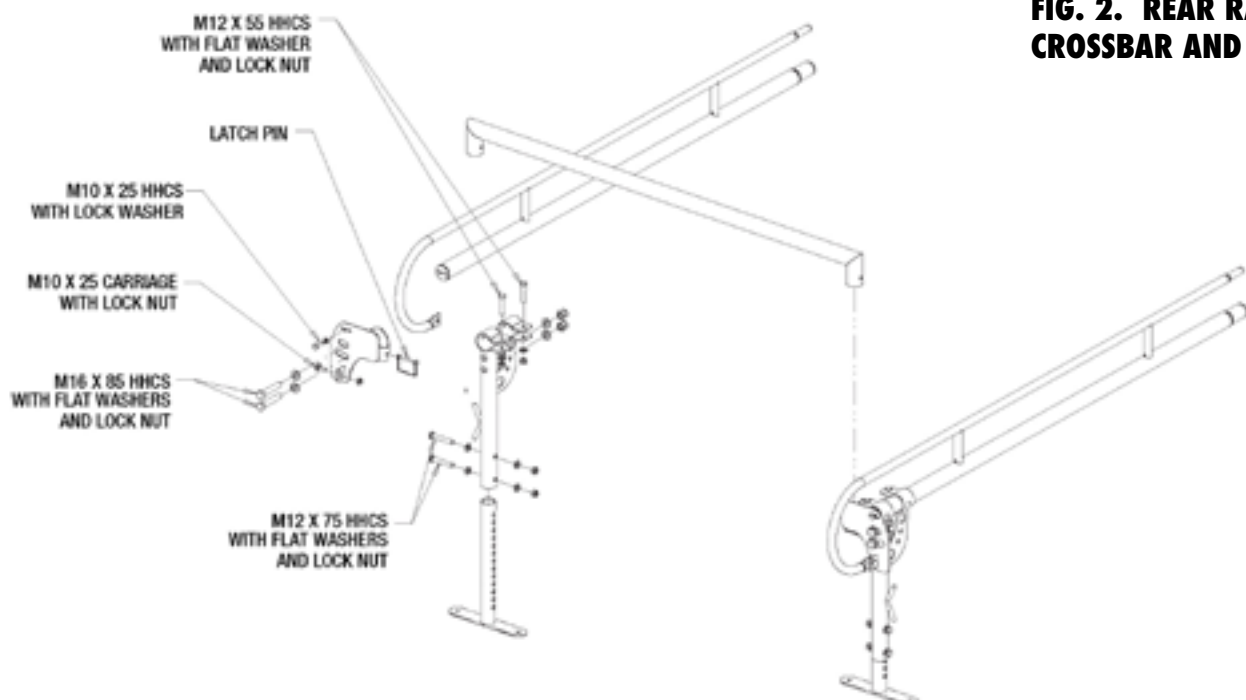
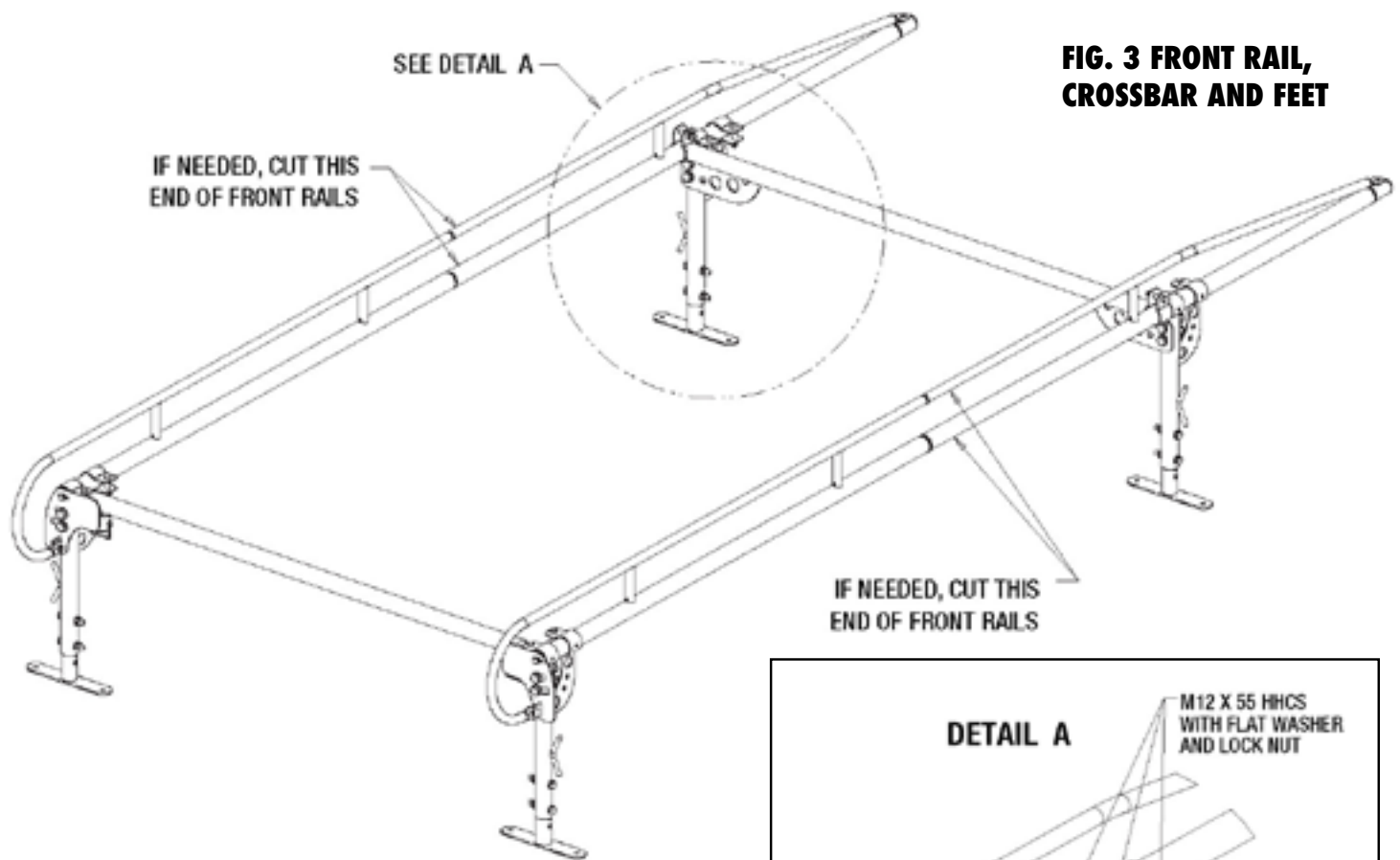
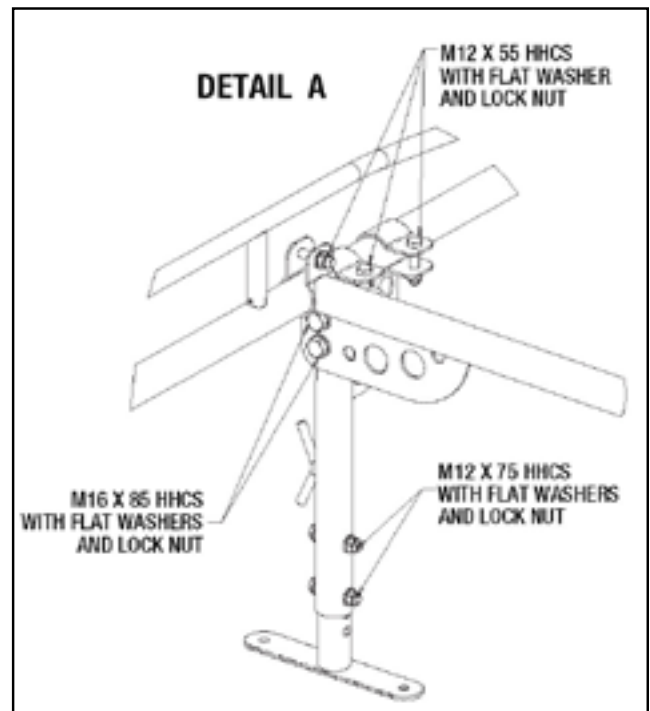


FIG. 2. REAR RAIL, CROSSBAR AND FEET

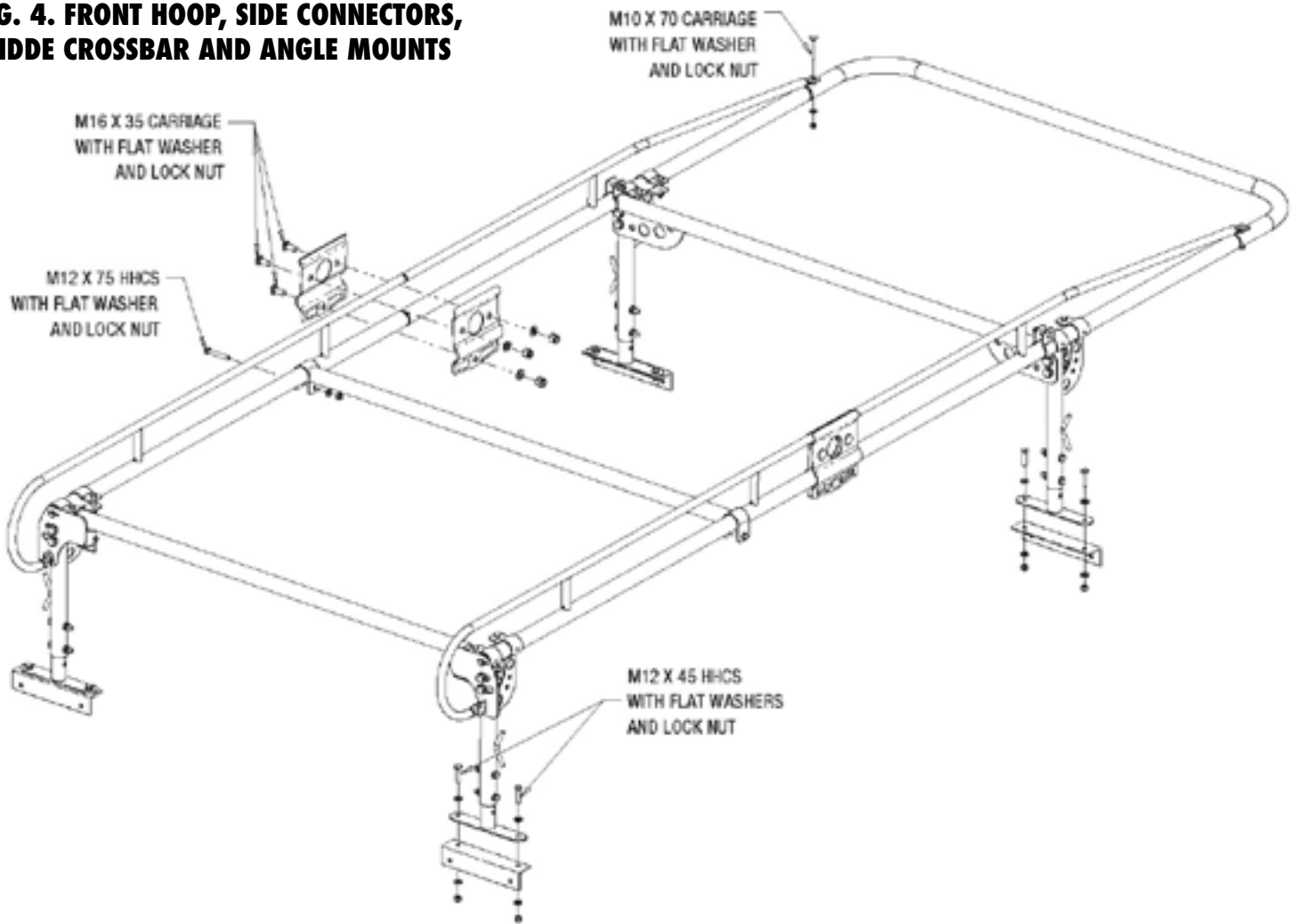


**FIG. 3 FRONT RAIL,
CROSSBAR AND FEET**



- D. Slide the Front Crossbar onto the Front Rails.
- E. Join the Front and Rear halves by sliding the Rear Side Rails into the Front Side Rails.
- F. Install the Side Connector Plates using (6) M16x35 Carriage Bolts with washers and lock nuts.
- G. Assemble the four Legs to the Side Rails using M12x55 HHCS with washers & lock nuts.
- H. Lift and rotate the legs inward so the Rack can stand by itself. Attach the Legs to the Front Crossbar and Rear Mounting Brackets using the M16x85 HHCS with (2) flat washers, and lock nuts.
- I. Insert the Feet into the Legs and attach using (8) M12x75 HHCS with washers and locknuts. Finger tighten only at this time.
- J. If the distance between the Front and Rear Legs (when adjusted to shortest point/position) is longer than the measured distance X the Front Side Rails will need to be cut.
- K. If it is necessary to shorten the rack, cut the Front Rails by the determined amount now. If cutting is necessary, you should paint the cut edges to prevent rust.
- L. Set the preassembled rack onto the truck to verify fit.
- M. After fit is verified, use predrilled holes in the Feet to mark the places where mounting holes will need to be drilled.
- N. Remove rack and drill all necessary holes (for 1/2" diameter hardware).

FIG. 4. FRONT HOOP, SIDE CONNECTORS, MIDDE CROSSBAR AND ANGLE MOUNTS



3. Final Installation – Fig. 4 and 5

NOTE: Silicone is provided to seal all joints and prevent water from entering toolboxes and/or the rack

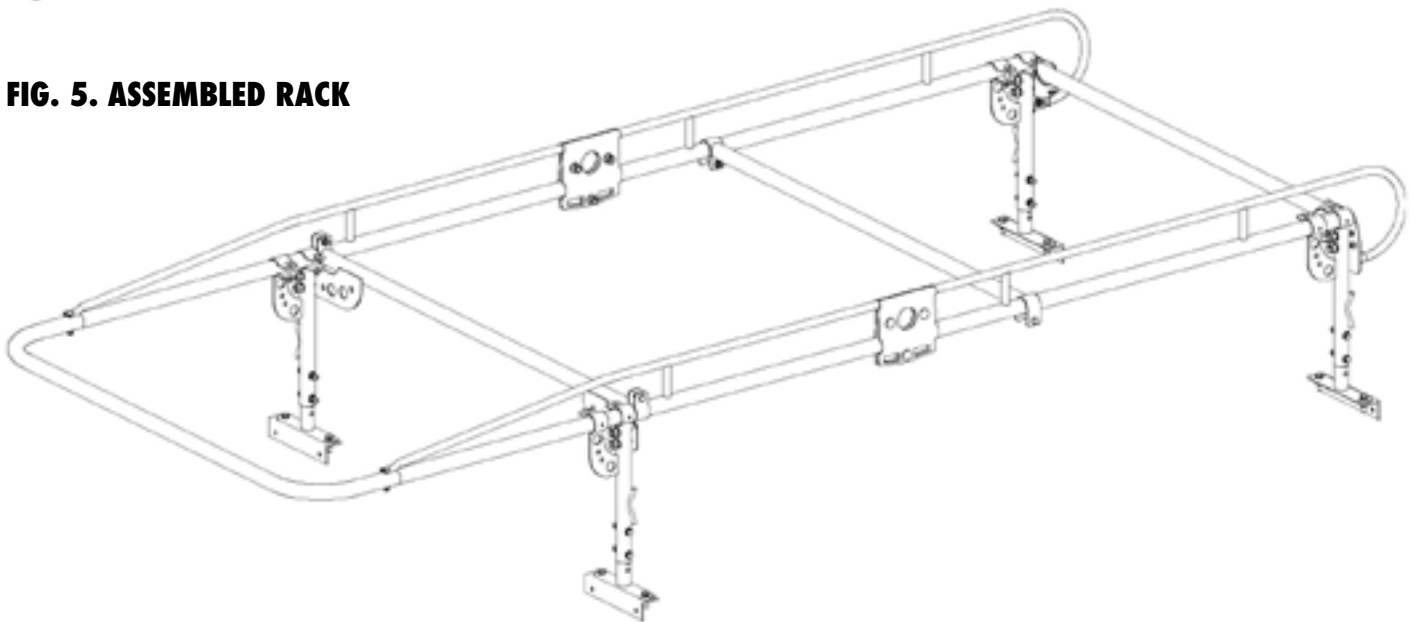
- A. Separate the Front and Rear halves of the rack, apply silicone around the entire swaged surfaces of the Rear Rails, and reconnect the halves.
- B. Install the Connector Plates and (4) M16x35 Carriage Bolts with washers and lock nuts.
- C. Install the Front Hoop
 - a. Apply silicone to the swaged surfaces of the Front Rails then slide the Front Hoop into position.
 - b. Use (2) M10x70 Carriage Bolts with washers & lock nuts to secure.
- D. Install the Center Crossmember using (2) M12x75 HHCS with washers and lock nuts.
- E. Position the Rack on the truck and attach using the Angles and (8) M12x45 HHCS with washers and lock nuts.

NOTE: The bottom of the feet have drain holes so if any gasket tape is used between the bottom of the feet and the body of the truck the installer should ensure that these drain holes remain uncovered.

4. Aligning, Maintenance, & Warning

- A. Aligning – Stand in front of the vehicle. Note the alignment of the cab hoop in relation to the roof of the truck cab. Have an assistant adjust the rack to the left or right until the front hoop is centered over the truck cab. The hardware that connects the mounting foot to the leg can now be tightened. Recheck alignment and adjust if necessary. All hardware can now be fully tightened, starting with the gusset points at the top of each leg.
- B. Maintenance – Your ladder rack has a powder coat finish and can be kept clean by using a soft sponge or cloth with mild soap and water.

FIG. 5. ASSEMBLED RACK



Optional Mount Position



Underneath View of Hardware and Bracket



PRODUCT WARRANTY & LIABILITY

GENERAL PRODUCT WARRANTY: Products purchased from the Authorized Dealer (original place of purchase) or Merchant ("Dealer") will be free of defects in material and workmanship at the time of receipt, and will meet the specifications stated at the place of purchase transaction or online at the Dealer's website, under normal use and service when correctly installed, operated and maintained. This product warranty is effective for the period of time stated below, unless otherwise stated in the product instructions or depicted in the product advertisement. All Authorized Dealer warranties are NON-TRANSFERABLE and cover only the original end purchaser. This limited warranty does not cover products purchased through non-authorized dealers. Non-authorized dealer receipts are not accepted for warranty verification.

*****WARRANTY CLAIMS MUST BE MADE DIRECTLY TO THE ORIGINAL PLACE OF PURCHASE.*****

WARRANTY PERIOD: This warranty remains in force for one year from the date of the product's accepted delivery. The Authorized Dealer offers a one year manufacturer's warranty for most products unless otherwise specified on the product advertisement.

WARRANTY SERVICE: The Authorized Dealer will replace any defective or malfunctioning part at no charge, including payment of the shipping costs of parts or replacement product to and from the manufacturer. The purchaser is responsible for labor charges. If the product does not meet specifications as depicted in the advertisement, the Authorized Dealer will refund the full purchase price of the product.

Questions regarding the warranty on a specific product and warranty claims should be directed to the Authorized Dealer with whom the purchase transaction was made.

WARRANTY LIMITATIONS: The above warranty does not apply to products that are repaired, modified or altered by any party other than the Authorized Dealer; are subjected to unusual physical stress or conditions (such as overloaded ramps or corrosion), natural disaster, governmental actions, wars, strikes, labor disputes, riots, theft, vandalism, terrorism or any reason beyond reasonable control; are damaged due to improper installation, misuse, abuse, accident or negligence in use, storage, transportation or handling, or tampering; or to products that are considered consumable items or items requiring repair or replacement due to normal wear and tear.

Product should be inspected prior to signing for delivery. Product damage incurred during shipping, unless noted on the Bill of Lading at the time of delivery, renders this warranty void.

LIMITED LIABILITY: In no event shall **THE AUTHORIZED DEALER** be liable to the purchaser or any third party for any indirect, incidental, consequential, special, exemplary or punitive damages arising out of the use of the product, including, without limitation, property damage, loss of value of the product or any third party products that are used in or with the product, or loss of use of the product or any third party products that are used in or with the product.

