

DECORATIVE PET STEPS



MR. HERZHER'S
PO BOX 430
AUBURN AL 36831-0430
PHONE 334-821-7800
WWW.MRHERZHER.COM

DECORATIVE PET STEPS

ASSEMBLY INSTRUCTIONS



VERIFY CONTENTS OF PACKAGE.

CONTENTS INCLUDE 2 SIDE PANELS (A), 2 BACK PANELS (B), 2 STEP RISERS (C), 2 STEP TREADS (D & E) AND 1 HARDWARE PACKAGE. CALL CUSTOMER SERVICE AT (334) 821-7800 IF ANY CONTENTS ARE MISSING OR DAMAGED. READ ENTIRE INSTRUCTIONS PRIOR TO STARTING.

- FOR PET USE ONLY - NOT INTENDED FOR HUMAN USE
- CLEAN WOOD SURFACES WITH FURNITURE POLISH
- CLEAN CARPET SURFACES WITH CARPET CLEANER
- FULLY ASSEMBLE UNIT WITH GLUE PROVIDED PRIOR TO USE
- LIMITED 1 YEAR WARRANTY
- REPLACEMENT PARTS AVAILABLE BY CALLING CUSTOMER SERVICE AT (334) 821-7800



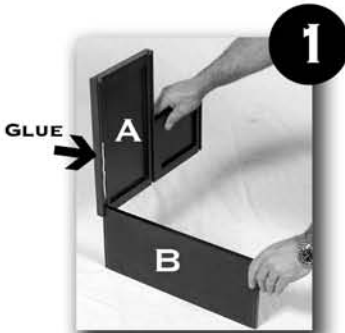
MR.HERZHER'S
PO Box 430 AUBURN AL 36831-0430
PHONE 334-821-7800 · WWW.MRHERZHER.COM

MADE IN CHINA

MR. HERZHER'S DECORATIVE PET STEPS

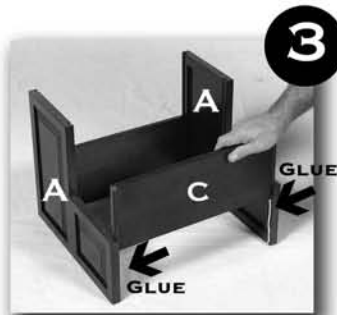
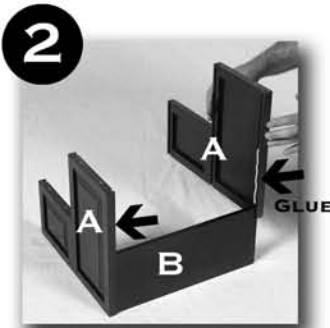
FIRST - VERIFY CONTENTS OF PACKAGE. CONTENTS INCLUDE 2 SIDE PANELS (A), 2 BACK PANELS (B), 2 STEP RISERS (C), 2 STEP TREADS (1 EACH D & E) AND 1 HARDWARE PACKAGE. CALL CUSTOMER SERVICE AT (334) 821-7800 IF ANY CONTENTS ARE MISSING OR DAMAGED. READ ENTIRE INSTRUCTIONS PRIOR TO STARTING.

SECOND - ASSEMBLE PET STEP ON A FLAT SURFACE USING CARDBOARD OR PAPER PROTECTING THE SURFACE. HAVE A DAMP RAG AVAILABLE DURING THE GLUING PROCESS TO WIPE ANY EXCESS GLUE FROM PRODUCT.



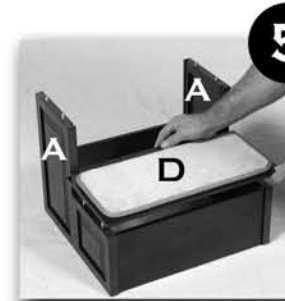
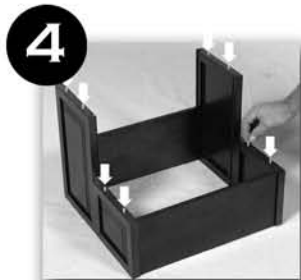
1 **STEP 1** - USING THE GLUE PROVIDED, GLUE BOTTOM HALF OF THE BACK DOVETAIL JOINT ON A SIDE PANEL (A) AND INSERT OVER FIRST BACK PANEL (B).

2 **STEP 2** - GLUE BOTTOM HALF OF BACK DOVETAIL JOINT ON OTHER SIDE PANEL (A) AND SLIDE OVER BACK PANEL (B).



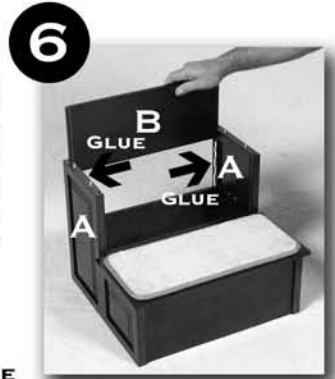
3 **STEP 3** - GLUE BOTH DOVETAIL JOINTS AT FRONT OF BOTH SIDE PANELS (A) AND SLIDE FIRST RISER (C) INTO DOVETAIL JOINTS.

4 **STEP 4** - DISPENSE SMALL AMOUNT OF GLUE IN HOLES (8 EACH) ON TOP SURFACES OF SIDE PANELS AND INSERT DOWELS.



5 **STEP 5** - DISPENSE SMALL AMOUNT OF GLUE IN HOLES ON UNDERSIDE SURFACE OF FIRST STEP TREAD (D) AND INSERT STEP TREAD ONTO DOWELS OF SIDE PANELS (A).

6 **STEP 6** - GLUE BOTH DOVETAIL JOINTS AT BACK OF SIDE PANELS (A) AND SLIDE BACK PANEL (B) INTO DOVETAIL JOINTS.



7 **STEP 7** - GLUE BOTH DOVETAIL JOINTS IN MIDDLE OF SIDE PANELS (A) AND SLIDE SECOND STEP RISER (C) INTO DOVETAIL JOINTS.

8 **STEP 8** - DISPENSE SMALL AMOUNT OF GLUE IN HOLES ON UNDERSIDE SURFACE OF TOP STEP TREAD (E) AND INSERT STEP TREAD ONTO DOWELS OF SIDE PANELS (A). ENSURE BACK OF TOP STEP TREAD IS FLUSH WITH BACK OF ASSEMBLED UNIT.



9 **STEP 9 - IMPORTANT** ALLOW TO DRY FOR 12 HOURS PRIOR TO PROCEEDING TO NEXT STEP. DO NOT INSTALL PROTECTIVE PADS UNTIL AFTER THE GLUING AND DRYING PROCESS IS COMPLETE.



10 **STEP 10** - AFTER GLUE HAS DRIED FOR 12 HOURS MINIMUM INSTALL PROTECTIVE PADS ON BOTTOM FOUR CORNERS.