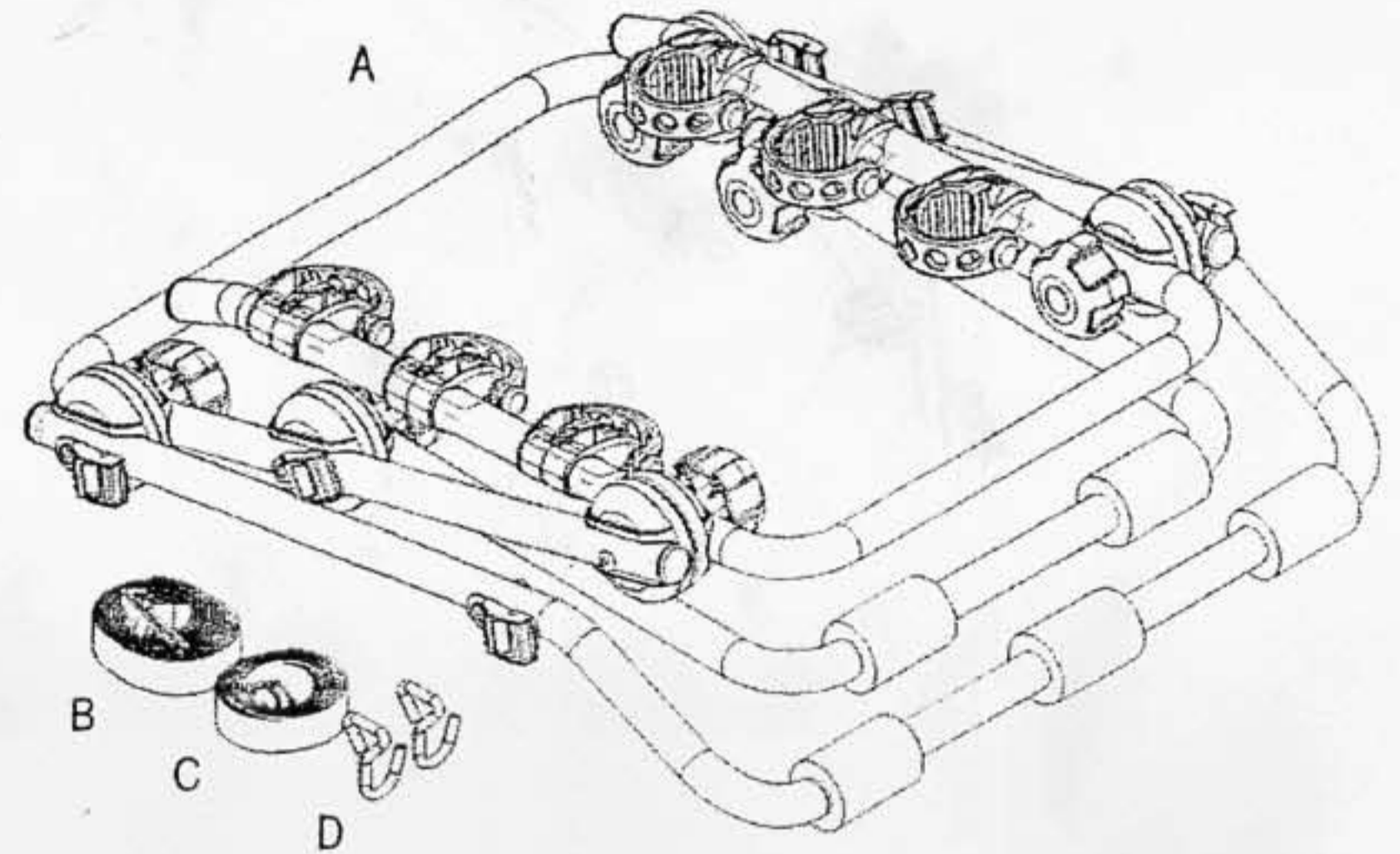
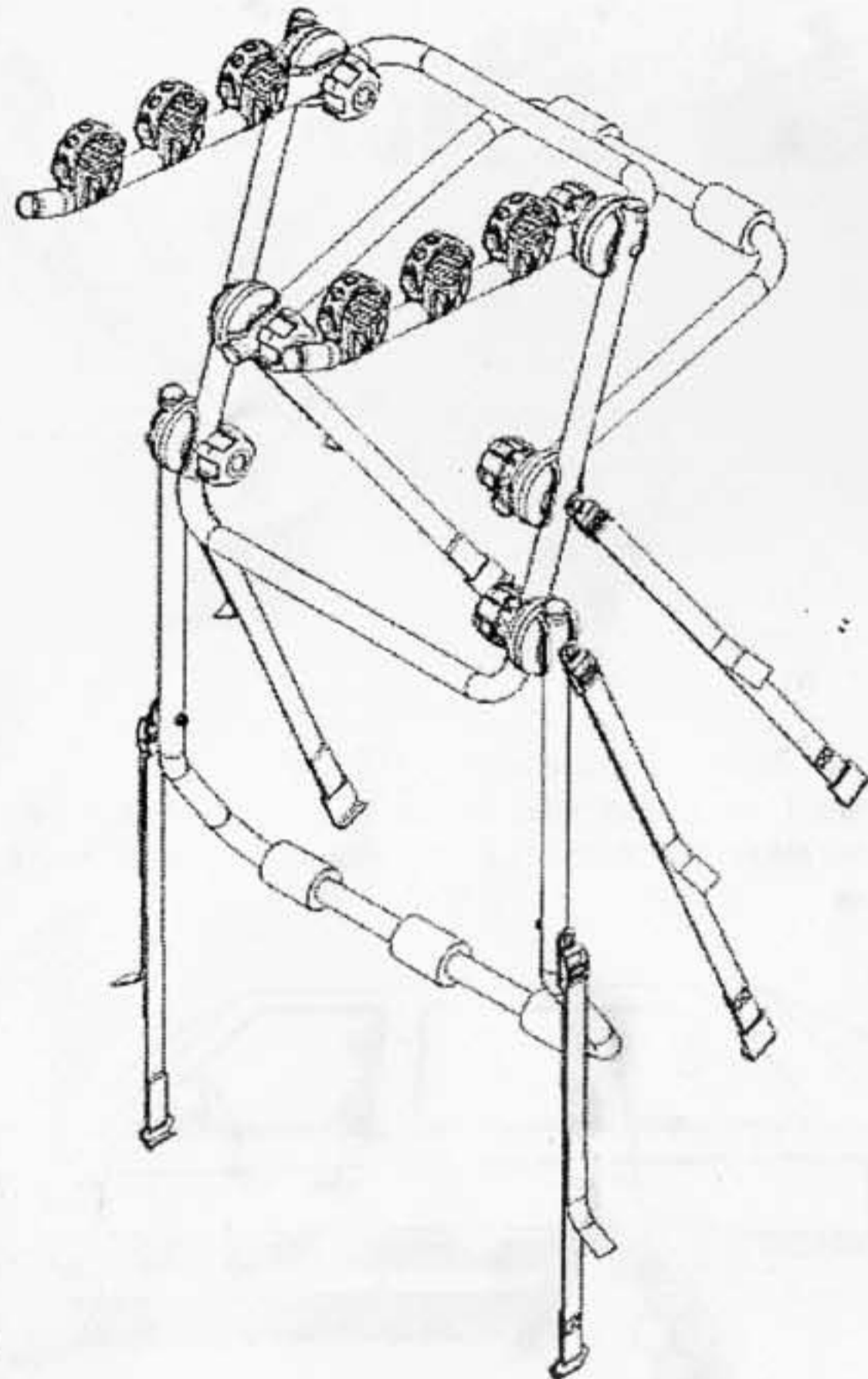


ART NO. BC-07515-3H

Back Carry Style Bike Carrier

Instructions



A. Bike Carrier	x1
B. Upper Hook with Strap	x2
Side Hook with Strap	x2
C. Lower Hook with Strap	x2
D. S type Hook	x2

When using your bike rack, always remember the following points :

1. Install this rack on structurally sound boot lids and/or bumpers only.
2. Never install upper hooks to plastic, glass or fiberglass.
3. Clean surface of the boot lid and bumper prior to installation.
4. Tighten all straps both before and after placing bikes on the rack.
5. Never place more than 45kg/100 lbs, on the Elevator Racks.
6. Use at least 2 tie-down straps or shock(bungee) cords for each bike when securing bikes to rack.
7. Keep bicycle tyres at least 30cm away from the exhaust pipe of the vehicle.
8. Check the rack, bikes and strap tension regularly during use.
9. Drive slowly when on bumpy or dirt roads.