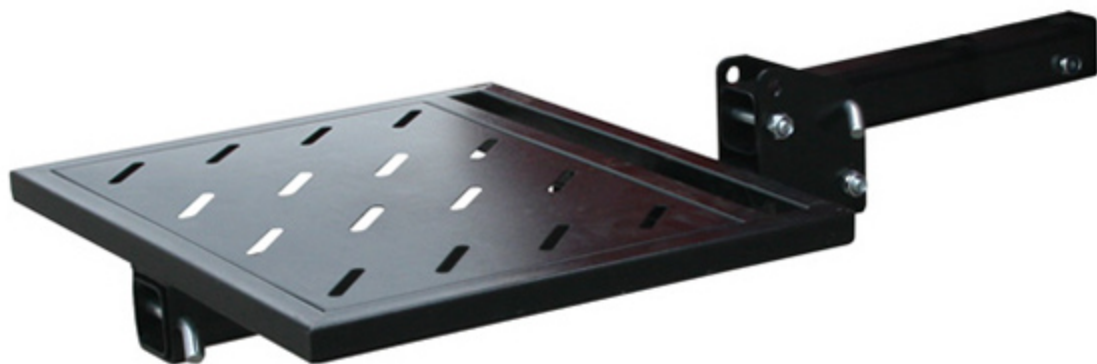


# RAGE

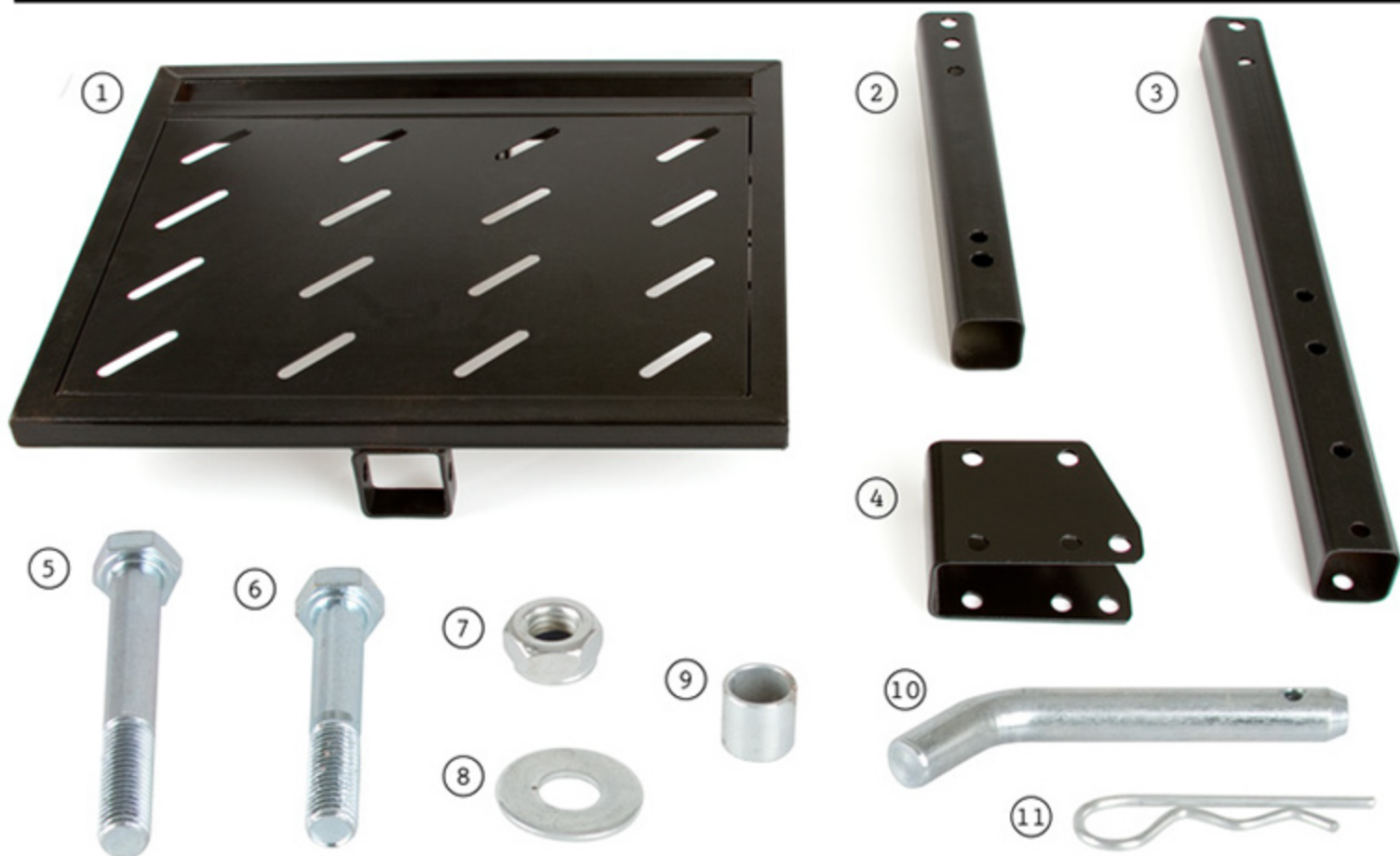
**POWERSPORT PRODUCTS**

## Assembly Instructions

for Folding Hitch Step HS-010



# Parts List:

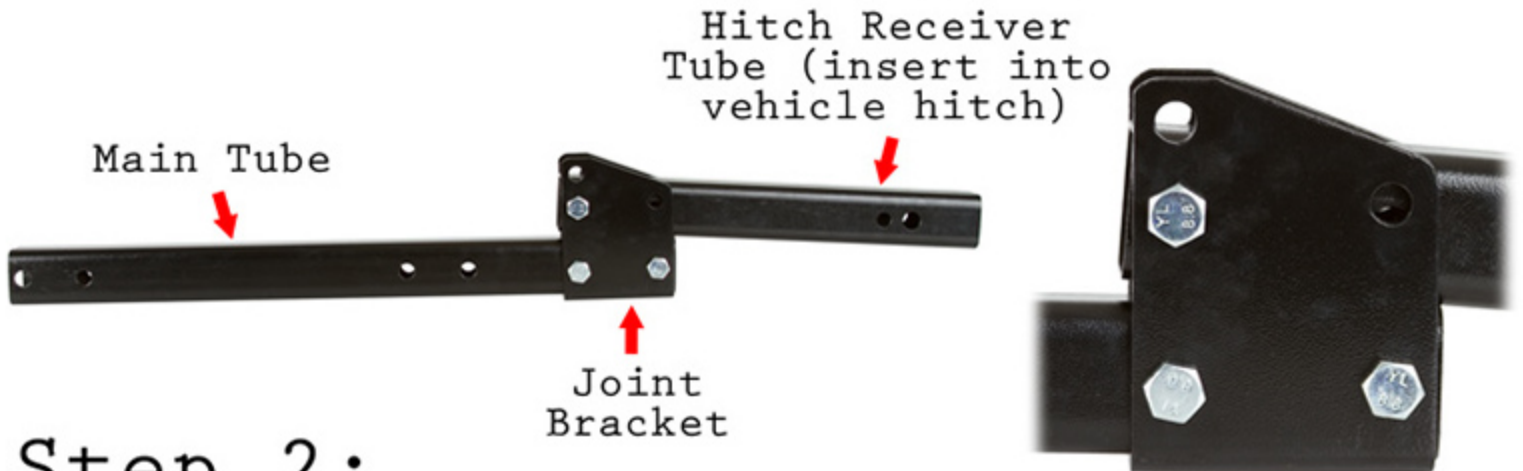


Index	Description	Quantity
1	Step Platform	1
2	Hitch Receiver Tube	1
3	Main Tube	1
4	Joint Bracket	1
5	12mm x 99mm Bolt	1
6	12mm x 80mm Bolt	3
7	Lock Nut	4
8	Flat Washer	1
9	1" x 1/2" ( <small>Inner Diameter</small> ) x 5/8" ( <small>Outer Diameter</small> ) Sleeve	1
10	Pin	3
11	Pin Clip	3

Tools Required: 19mm or 3/4" wrench

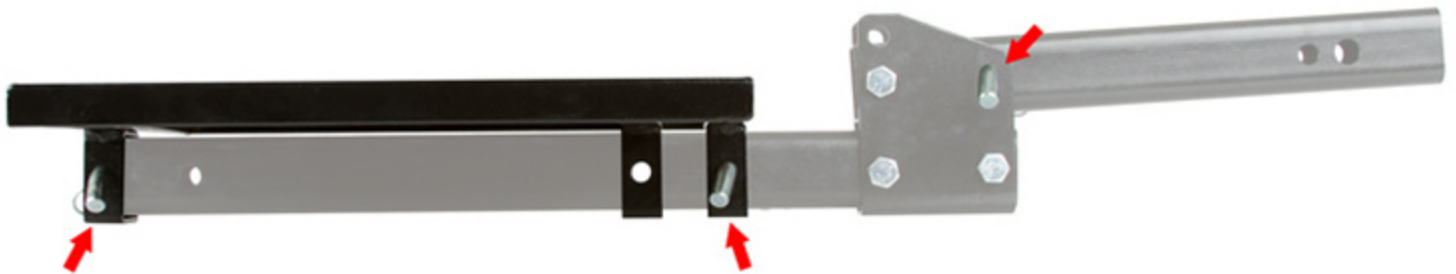
## Step 1:

Connect the Hitch Receiver Tube(2) to the Main Tube(3) with the Joint Bracket(4), three 12mm x 80mm Bolts(6), and three Lock Nuts(7).



## Step 2:

Slide the Step Platform(1) onto the Main Tube(3), aligning the holes. Insert two of the Pins(10) into the holes and secure with Pin Clips(11) to hold the Step Platform in place.



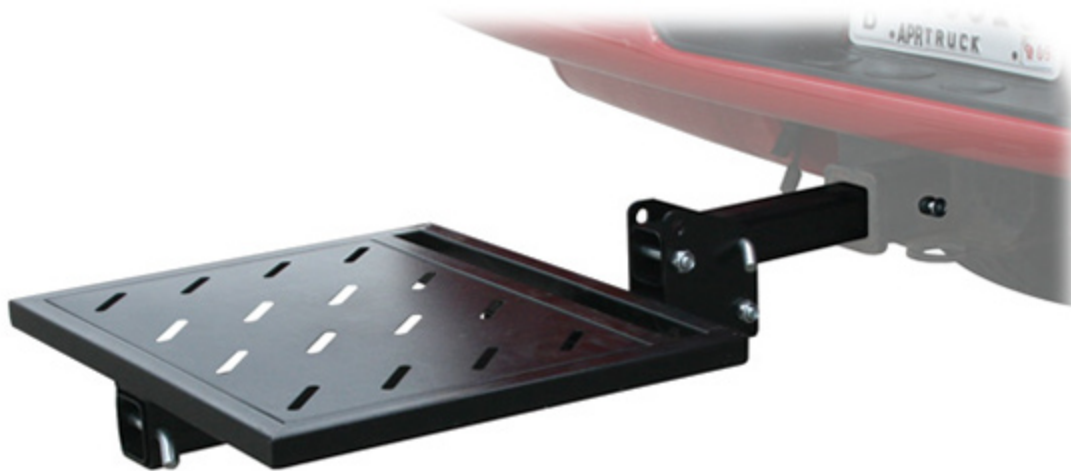
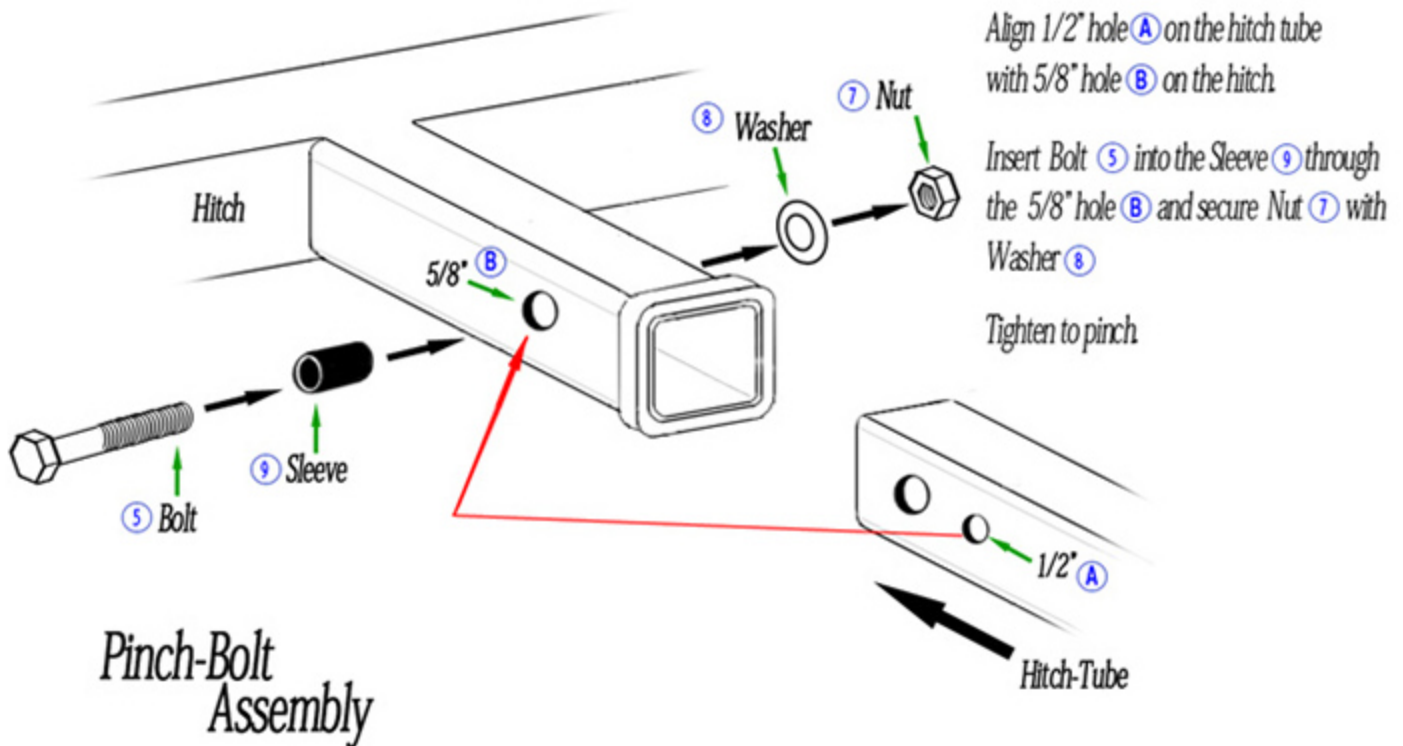
Opposite Side View:  
Secure Pin with Pin Clip



Insert the third Pin through the hole in the Joint Bracket and the Hitch Receiver Tube to lock the Hitch Step in an extended horizontal position. Secure Pin with Pin Clip.

# Step 3:

Insert the Hitch Receiver Tube into a 2" Class III or IV trailer hitch on your vehicle. Secure with the included Pinch Bolt Assembly (12mm x 99mm Bolt(5), Sleeve(9), Flat Washer(8), and Lock Nut(7)). You may also use your own hitch pin instead of pinch bolt if desired.



## NOTE:

The Folding Hitch Step has a 250 lb. weight capacity. Do not use as a cargo carrier.

## Step 4:

To fold up the Hitch Step, remove the pin from the Joint Bracket. Fold up the Hitch Step Platform into a vertical position, then insert and secure the pin in the hole through the Joint Bracket and the Hitch Receiver Tube. Keep the Hitch Step folded up when not in use.

