

FlexRamp installation instructions for a Mini-Van

PLEASE NOTE: The FlexRamp must be installed by an automotive mobility professional. The FlexRamp warranty is void if not installed by an automotive mobility professional. Serious personal injury, death or permanent damage to the vehicle may occur if this product is not installed by an automotive mobility professional. For a list of approved installers see www.nmeda.org or contact your vehicle dealership.

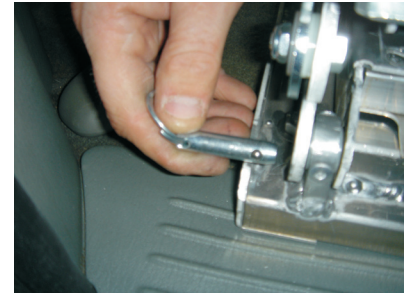
Remove the ramp from the shipping carton and position the ramp on the floor of the van near the entry door. You will need to determine the exact location the ramp should be positioned on the floor so the ramp will function correctly prior to attaching the mounting plate to the floor of the van. With the entry door closed move the ramp and mounting plate to a parallel position with the door so that it does not interfere with the operations of the entry door.



The fold down support legs and the ramp should not interfere with the door opening and closing as designed. Now you need to open the entry door and extend the ramp to assure the ramp's location, when in use, does not interfere with the door or door frame. When the ramp is properly positioned in the doorway the ramp will extend outward, fold inward and will not interfere with operations of the entry door. Using the four holes in the ramps mounting plate or corners of the mounting plate as a reference point, determine where holes need to be drilled in the van floor to properly install the ramp.



Once you have determined the proper location of the ramp and that it does not interfere with the entry door function you will need to separate the mounting plate from the extendable folding portion of the ramp. To do this, pull the two quick release pins holding the scissor arms and folding tread plates to the mounting plate. Now using the 4 holes in the mounting plate mark the van floor for the location of the mounting holes which will be drilled in the van floor.

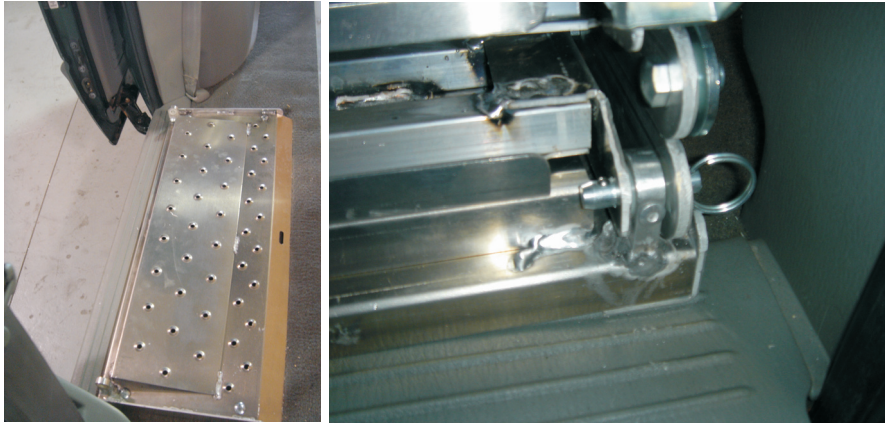


NOTE: Prior to drilling the mounting plate bolt holes, inspect the floor area and under carriage for potential interference with electrical wiring, hose lines or door tracking interference. If drilling the mounting holes and inserting the mounting bolts into the holes interact with any function of the van's performance, then reposition the ramp so the bolts will not interfere with any van function.

If no interference is determined, then proceed with mounting. Drill 3/8" holes at the pre-determined mounting points. Position the floor mounting plate over the holes and using a high grade automotive bolt, attach the floor mounting plate to the floor of the van. **NOTE:** The professional installer will determine the best length and type bolt and washers needed for the specific van installation. In some cases the head of the bolt and washers may need to re-positioned on top of the mounting plate with the nuts and washers positioned under the van frame or vice versa. During the attachment process make sure you seal the bolt holes through the floor with an automotive sealant to eliminate water from entering the passenger compartment of the vehicle.



Once the mounting plate has been bolted to the floor of the van, re-attach the folding scissor arm/tread plate portion of the folding ramp to the mounting plate using the two quick release pins. Check for operational clearance of the ramp and all van functions to assure that it is mounted in the proper location.



If you have any questions please call 800 478-2363.