

---

# OPERATION AND MAINTENANCE INSTRUCTION MANUAL



**LIFT**

**MODEL NO.: BW-1100HDXL**

---

The specifications stated on this brochure are not binding. We reserve the right to change the specification without notice.

## **1. General information**

This Motorcycle lift is a kind of new product that my company develops for various motorcycles maintenance profession. Reasonable structure, convenience usage, beautiful proplasm. It equipped with a pneumatic clamp for locking front wheel conveniently and lifting maximum 500Kg. Any other use is improper and therefore not authorized. Before beginning any kind of work on or with this machine, carefully read and understand the contents of these operating instructions. We shall not liable for any injury to persons or damage to things caused by improper use of this machine.

*KEEP THIS MANUAL NEAR THE MACHINE AND CONSULT IT AS NEEDED DURING OPERATION*

## **2. Technical data**

1. Maximum Lifting Capacity: 500 kg
2. Lifting Time: 30-60 s
3. Lifting Height: 700 mm
4. Platform Length: 2200 mm
5. Platform width: 750 mm
5. Air pressure: 8-10bar
6. lubricating oil: 20#
7. Weight: 200 kg

## **3. Installation and adjustment**

Once the packing material has been removed, check the machine visually for any signs of damage.

Keep the packing materials out of the reach of children as they can be a source of danger.

*KEEP THE PACKING FOR POSSIBLE FUTURE TRANSPORT*

Choose the place the machine is to be installed in compliance with current work place safety regulations. The floor should not be broken or uneven so that the machine will be stable and the platform can move freely.

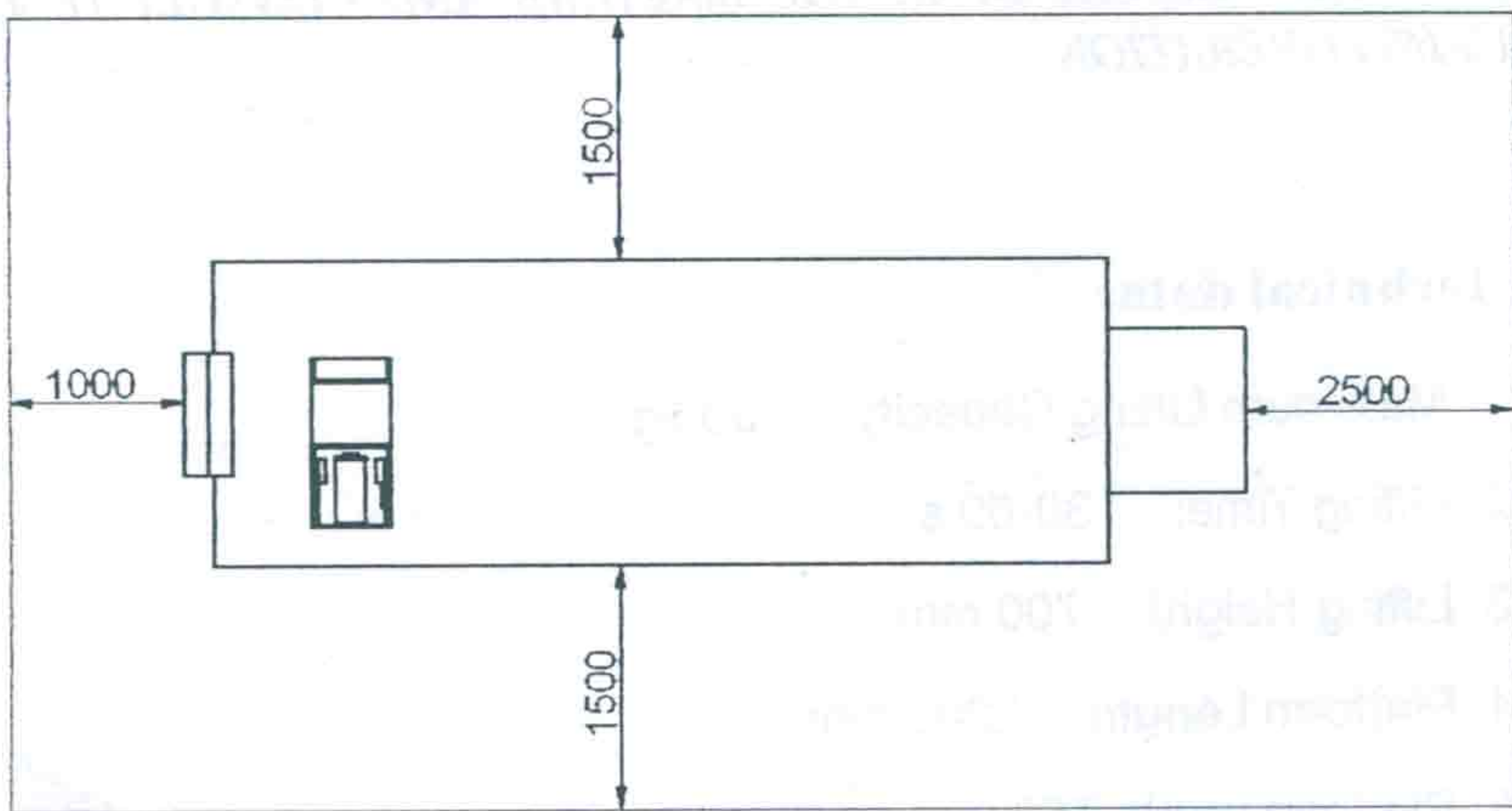
If the installation is outdoor, it must be protected by some kind of roofing against rain.

The following work environment conditions are applicable:

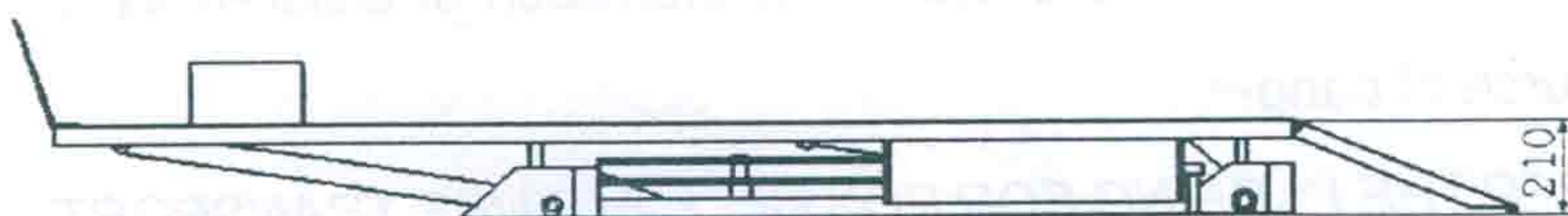
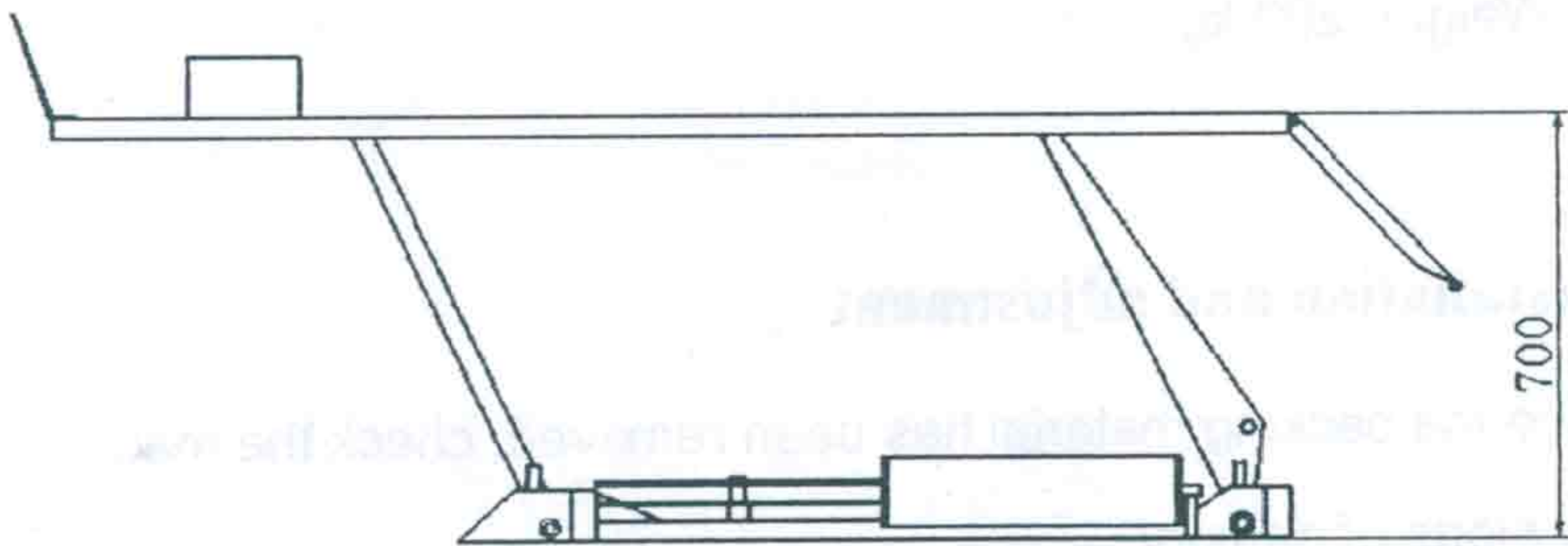
Relative humidity: from 30-95% without condensation

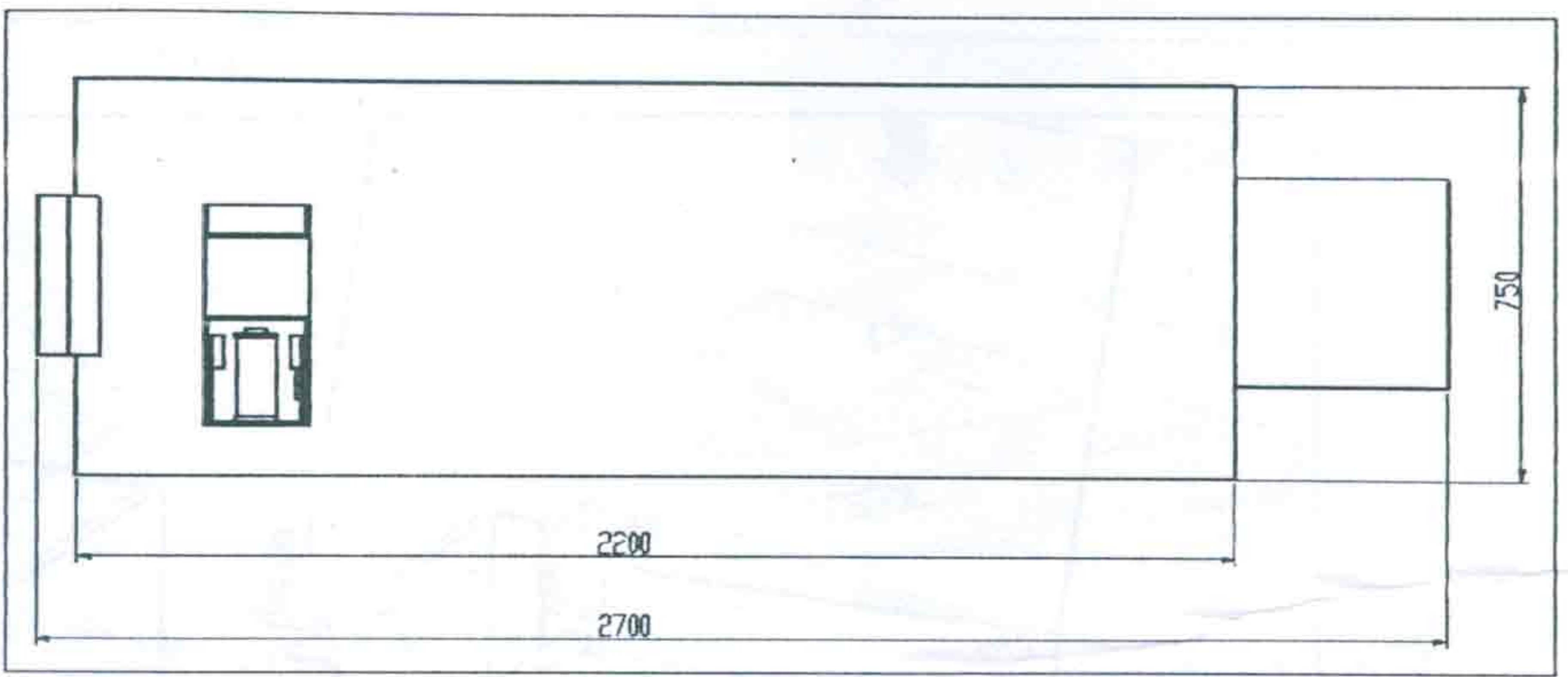
Temperature: from 10-55° C

### **WORKPLACE REQUIREMENT**



### **MACHINE SIZE**

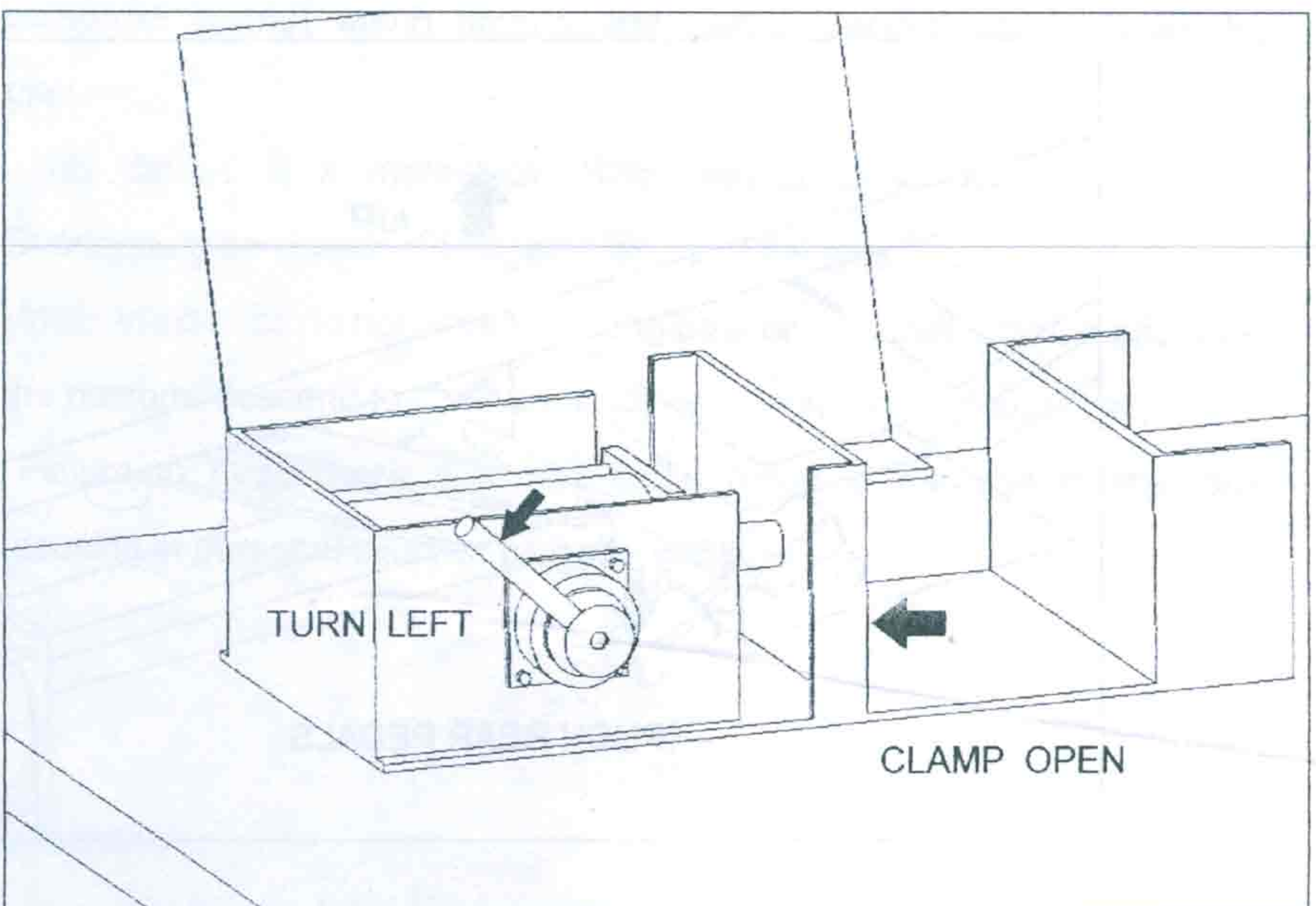


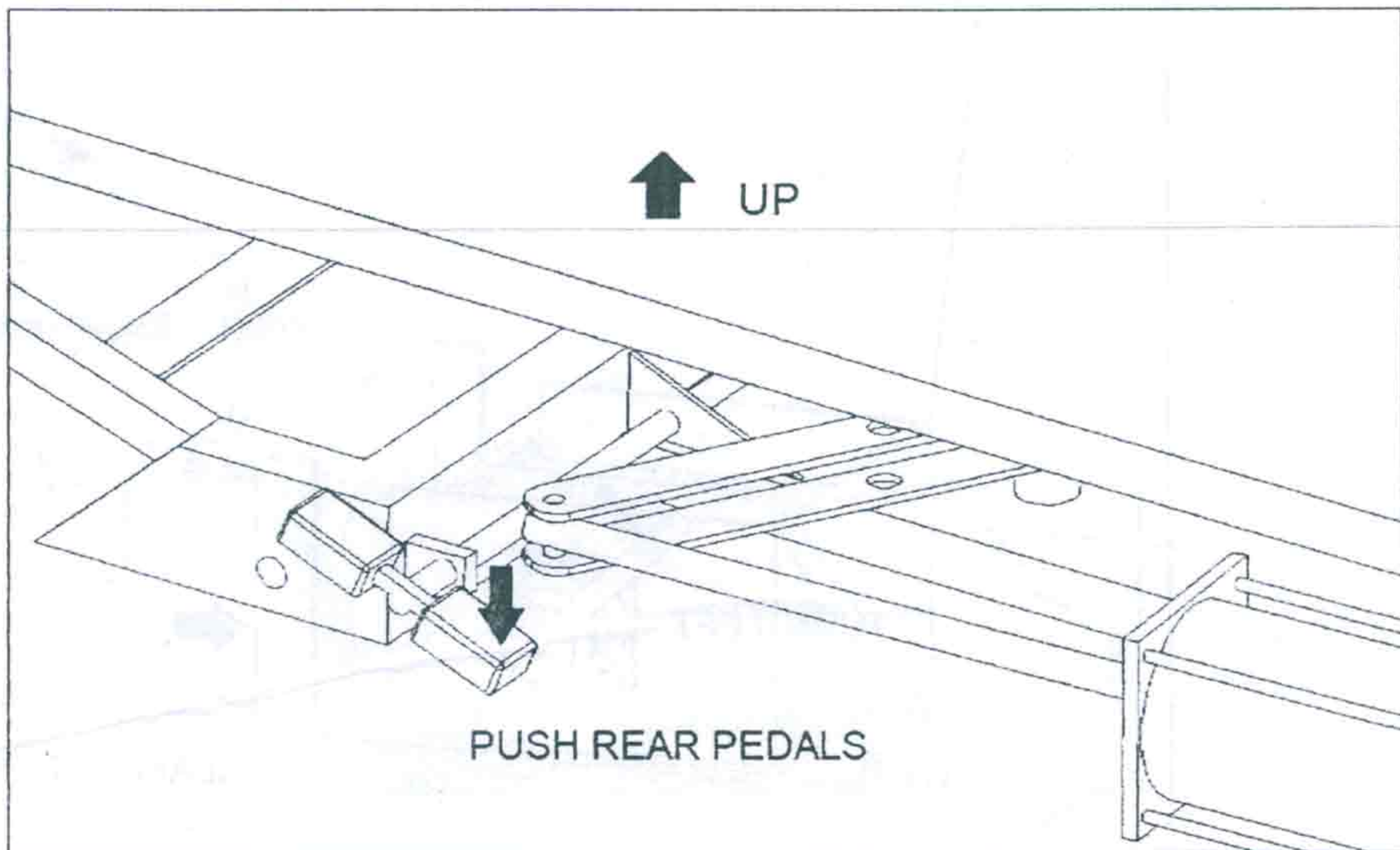
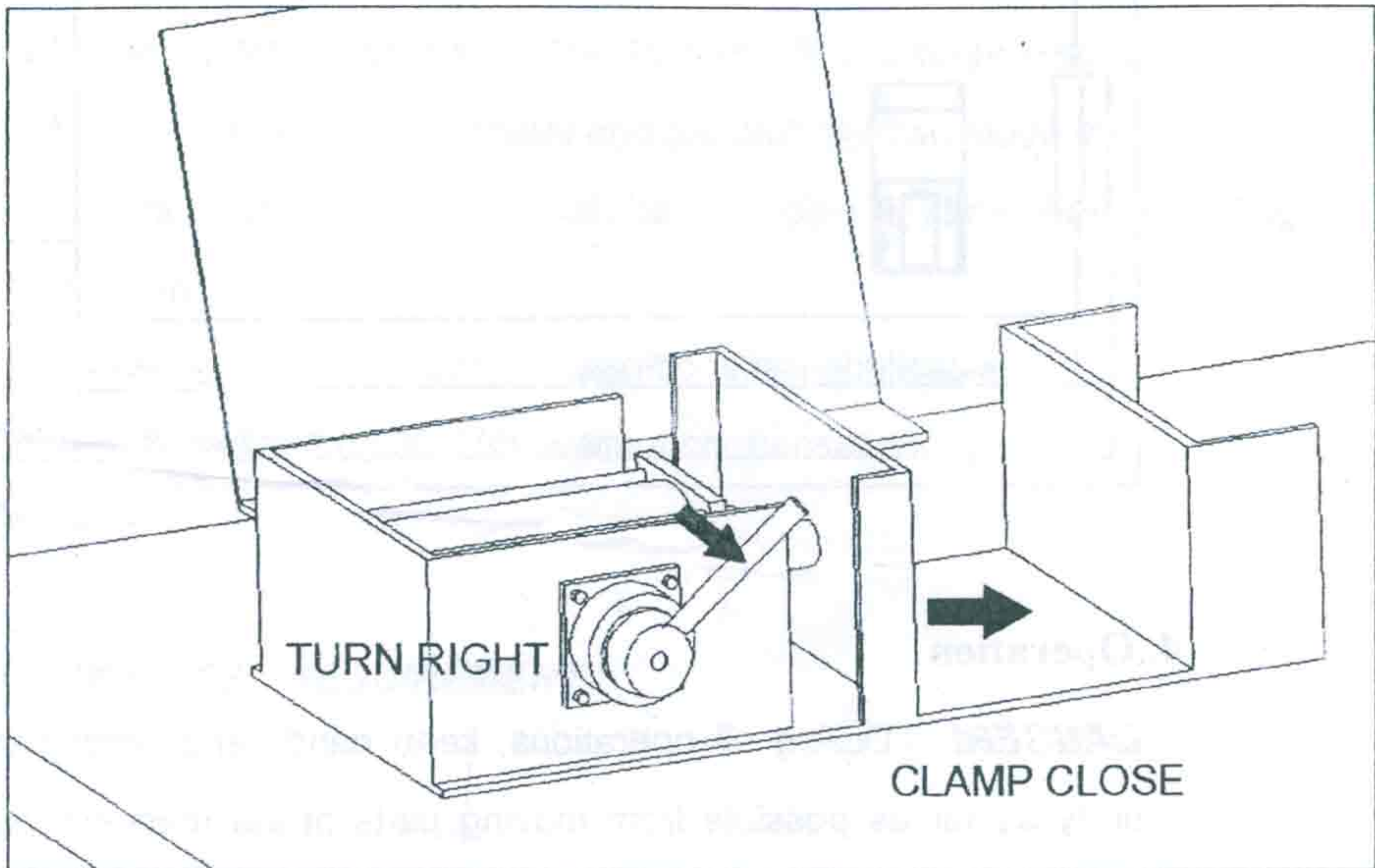


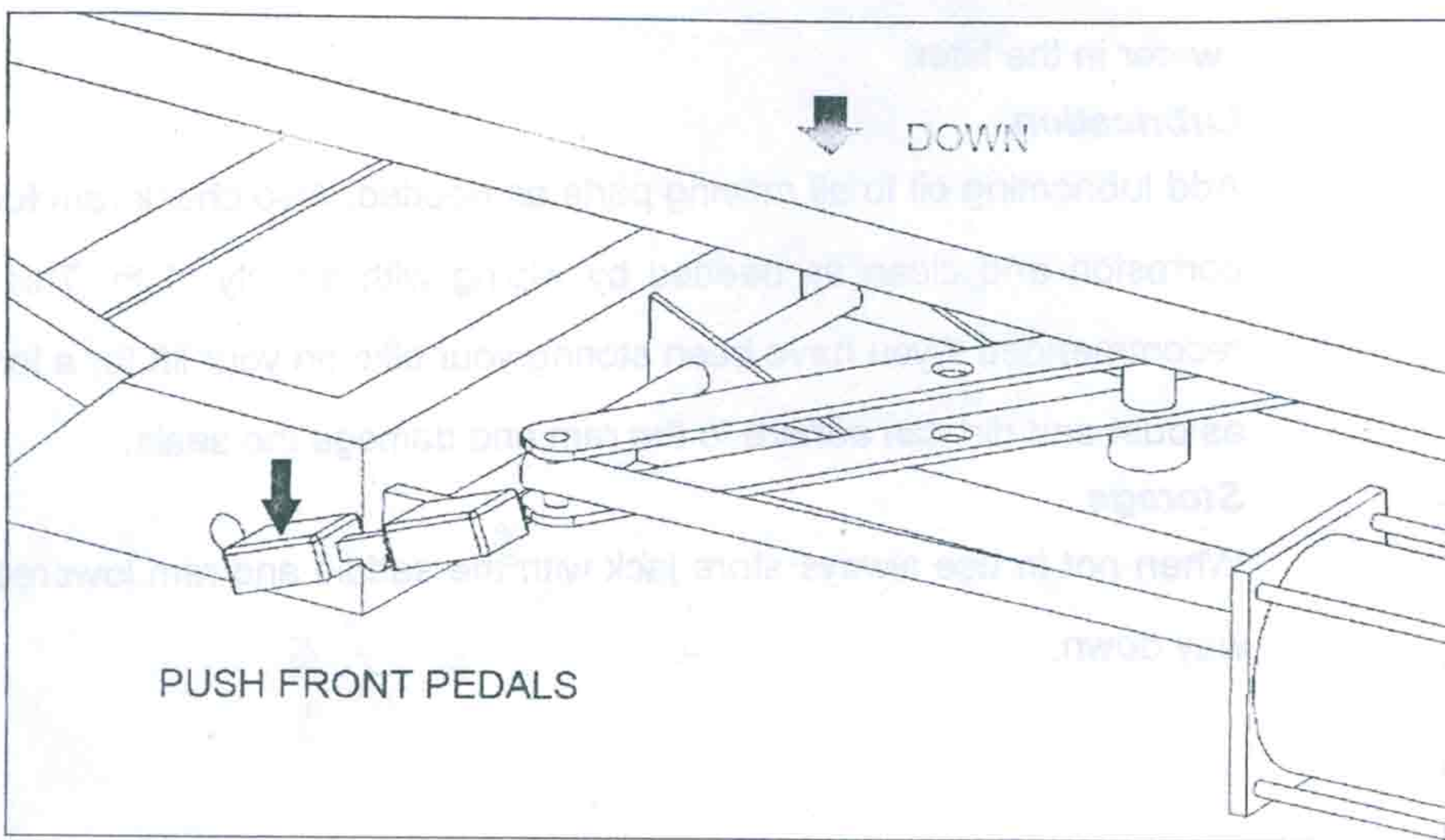
#### 4. Operation

**DANGER!** During all operations, keep hands and other parts of the body as far as possible from moving parts of the machine. Necklaces, bracelets and too large clothes, can be dangerous for the operator.

It's easy and convenient to operating this jack. Follow the figures:







## 5. Warning

1. Before working, clean off the impediments all around, unauthorized personnel cannot watch around and person cannot stand above the platform.
2. This device is a motorcycle lifting device only. Do not overload. Overloading can cause damage or failure of the jack.
3. When the device do not work for a long time or stay over night, make sure the platform descend to the lowest position, then turns off air supply.
4. Failure to heed these warnings could result in damage to the jack resulting in personal injury or property damage.

## 6. Maintenance

The oil level should be filled to the level of the oil filler plug. If the oil is below that level, you will need to add lubricating oil. And termly clean the

water in the filter.

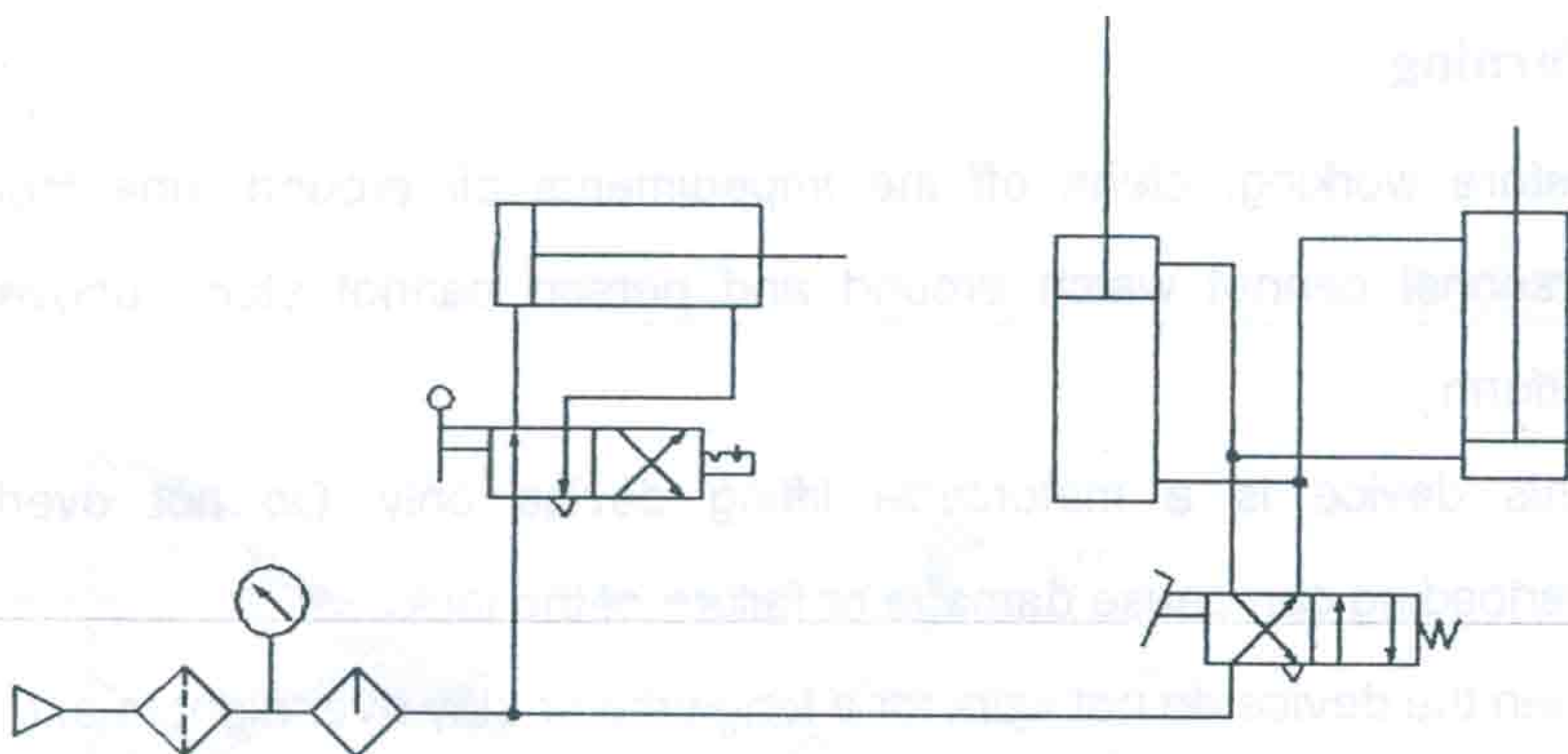
### **Lubrication**

Add lubricating oil to all moving parts as needed. Also check ram for rust or corrosion and clean as needed by wiping with an oily cloth. This is also recommended if you have been storing your bike on your lift for a long time, as dust and dirt can adhere to the ram and damage the seals.

### **Storage**

When not in use always store jack with the saddle and ram lowered all the way down.

## **7. Pneumatic systems**



**PNEUMATIC SYSTEMS**

