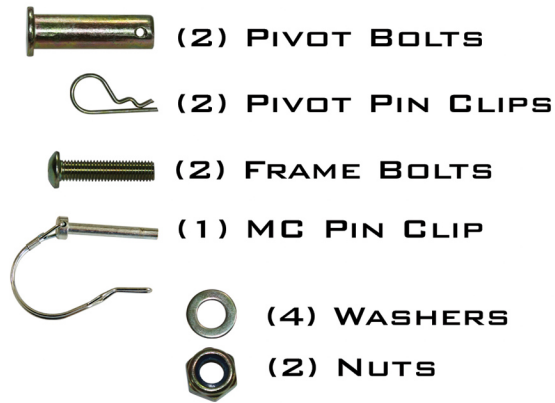


Black Widow

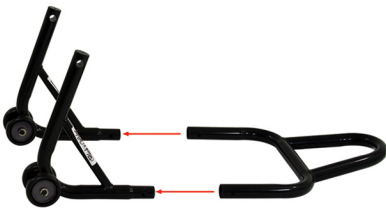
MOTORCYCLE RACE STAND INSTRUCTIONS

PARTS LIST



ASSEMBLY

FOR A COMPLETE VISUAL ASSEMBLY DIAGRAM, PLEASE VIEW THE SECOND PAGE OF THESE INSTRUCTIONS



STEP 1.

SLIDE BOTH **FRAME ARMS** INTO THE **HANDLE** AND SECURE TOGETHER USING **(2) FRAME BOLTS**, **(4) WASHERS** AND **(2) NUTS**.

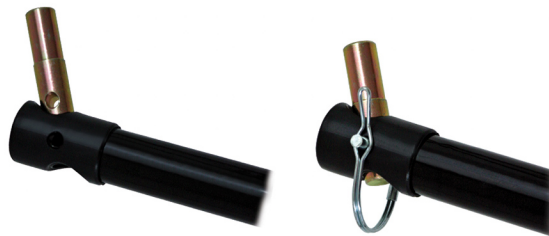


STEP 2.

ALIGN THE **TOP FRAME** WITH THE **ARMS** TO SECURE USING **(2) PIVOT BOLTS** AND **PIVOT CLIPS**.

STEP 3.

INSERT DESIRED **MOTORCYCLE PIN** IN THE **TOP FRAME**, SECURE IN PLACE WITH THE **MC PIN CLIP**.



STEP 4.

SLIDE STAND TO THE **MOTORCYCLE FRONT-END**, ALIGNING **MOTORCYCLE PIN** WITH **TRIPLE-TREE**.

STEP 5.

PUSH DOWN ON THE **MOTORCYCLE RACE STAND HANDLE** TO **LIFT MOTORCYCLE FRONT-END**.



Black Widow

MOTORCYCLE RACE STAND ASSEMBLY DIAGRAM

